

Datasheet for ABIN7043768

anti-Sortilin 1 antibody (Extracellular Domain)**3** Images[Go to Product page](#)

Overview

Quantity:	25 µL
Target:	Sortilin 1 (SORT1)
Binding Specificity:	AA 320-335, Extracellular Domain
Reactivity:	Human, Rat, Mouse
Host:	Rabbit
Clonality:	Polyclonal
Application:	Immunohistochemistry (IHC), Western Blotting (WB), Flow Cytometry (FACS), Immunofluorescence (IF)

Product Details

Immunogen:	Immunogen: Synthetic peptide Immunogen Sequence: DKDTTRRIHVSTDQD(C) corresponding to amino acid residues 320-335 of human Sortilin
Isotype:	IgG
Characteristics:	Anti-Sortilin (extracellular) Antibody (ABIN7043768, ABIN7044759 and ABIN7044760)) is a highly specific antibody directed against an epitope of the human protein. The antibody can be used in western blot, immunohistochemistry, and live cell flow cytometry applications. It has been designed to recognize Sortilin from mouse, rat, and human samples.
Purification:	Affinity purified on immobilized antigen.

Target Details

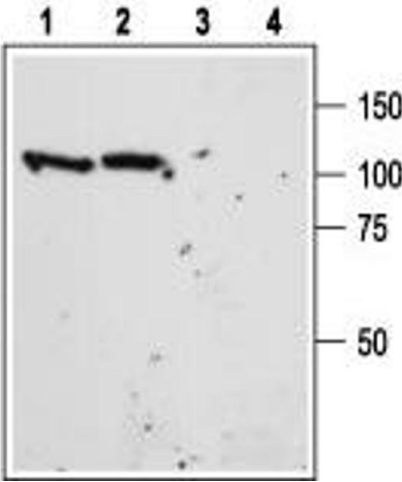
Target:	Sortilin 1 (SORT1)
Alternative Name:	Sortilin (SORT1 Products)
Background:	Alternative names: Sortilin, SORT1, Neurotensin Receptor 3, NTR3, NT3, Glycoprotein 95, Gp95
Gene ID:	6272
NCBI Accession:	NM_002959
UniProt:	Q99523
Pathways:	Neurotrophin Signaling Pathway

Application Details

Application Notes:	Optimal working dilution should be determined by the investigator.
Restrictions:	For Research Use only

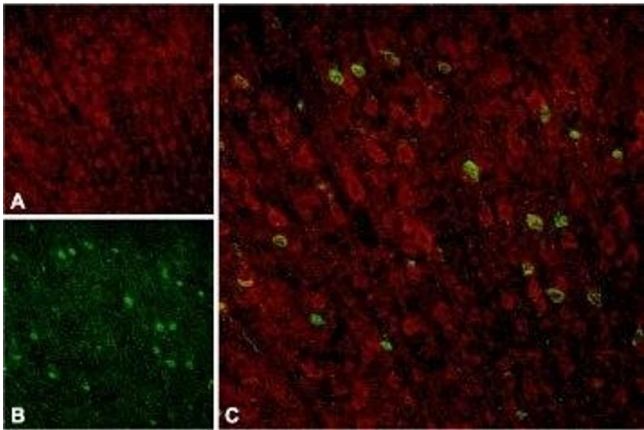
Handling

Format:	Lyophilized
Reconstitution:	25 µL, 50 µL or 0.2 mL double distilled water (DDW), depending on the sample size.
Concentration:	0.4 mg/mL
Buffer:	Reconstituted antibody contains phosphate buffered saline (PBS), pH 7.4, 1 % BSA, 0.05 % Sodium azide.
Preservative:	Sodium azide
Precaution of Use:	This product contains Sodium azide: a POISONOUS AND HAZARDOUS SUBSTANCE which should be handled by trained staff only.
Storage:	RT, 4 °C, -20 °C
Storage Comment:	<p>Storage before reconstitution: The antibody ships as a lyophilized powder at room temperature. Upon arrival, it should be stored at -20°C.</p> <p>Storage after reconstitution: The reconstituted solution can be stored at 4°C for up to 1 week. For longer periods, small aliquots should be stored at -20°C. Avoid multiple freezing and thawing. Centrifuge all antibody preparations before use (10000 x g 5 min).</p>



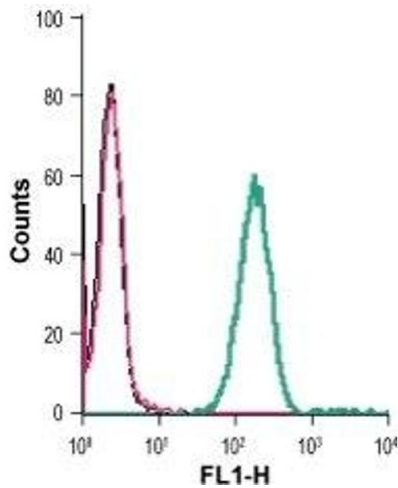
Western Blotting

Image 1. Western blot analysis of mouse (lanes 1 and 3) and rat (lanes 2 and 4) brain lysate: - 1,2. Anti-Sortilin (extracellular) Antibody (ABIN7043768, ABIN7044759 and ABIN7044760), (1:400).3,4. Anti-Sortilin (extracellular) Antibody, preincubated with Sortilin (extracellular) Blocking Peptide (#BLP-NT009).



Immunohistochemistry

Image 2. Expression of Sortilin in rat neocortex - Immunohistochemical staining of rat neocortex with Anti-Sortilin (extracellular) Antibody (ABIN7043768, ABIN7044759 and ABIN7044760). A. Sortilin appears in cortical neurons (red). B. Staining of interneurons with mouse anti-parvalbumin (PV, green). C. Confocal merge of Sortilin and PV demonstrates separate localization in neocortex.



Flow Cytometry

Image 3. Indirect flow cytometry of live intact human THP-1 monocytic leukemia cells: (black line) Cells.(red line) Cells + goat-anti-rabbit-FITC.(green line) Cells + Anti-Sortilin (extracellular) Antibody (ABIN7043768, ABIN7044759 and ABIN7044760), (2.5 µg) + goat-anti-rabbit-FITC.