

Datasheet for ABIN7043769

**anti-Sortilin 1 antibody (Extracellular Domain) (FITC)****2** Images[Go to Product page](#)

## Overview

Quantity:	50 µL
Target:	Sortilin 1 (SORT1)
Binding Specificity:	AA 320-335, Extracellular Domain
Reactivity:	Human, Rat, Mouse
Host:	Rabbit
Clonality:	Polyclonal
Conjugate:	This Sortilin 1 antibody is conjugated to FITC
Application:	Flow Cytometry (FACS)

## Product Details

Immunogen:	Immunogen: Synthetic peptide Immunogen Sequence: DKDTRRIHVSTDQD(C) corresponding to amino acid residues 320-335 of human Sortilin
Isotype:	IgG
Characteristics:	Anti-Sortilin (extracellular) Antibody (ABIN7043768, ABIN7044759 and ABIN7044760)) is a highly specific antibody directed against an epitope of the human protein. The antibody can be used in western blot, immunohistochemistry, and live cell flow cytometry applications. It has been designed to recognize Sortilin from mouse, rat, and human samples. \nAnti-Sortilin (extracellular)-FITC Antibody (ABIN7043768, ABIN7044759 and ABIN7044760)-F is directly conjugated to fluorescein isothiocyanate (FITC). The antibody can be used in immunofluorescent applications such as direct live cell flow cytometry.

## Product Details

Purification: Affinity purified on immobilized antigen.

## Target Details

Target: Sortilin 1 (SORT1)

Alternative Name: Sortilin ([SORT1 Products](#))

Background: Alternative names: Sortilin (extracellular)-FITC, Sortilin 1, SORT1, Neurotensin Receptor 3, NTR3, NT3, Glycoprotein 95, Gp95

Gene ID: 6272

NCBI Accession: [NM\\_002959](#)

UniProt: [Q99523](#)

Pathways: [Neurotrophin Signaling Pathway](#)

## Application Details

Application Notes: Optimal working dilution should be determined by the investigator.

Restrictions: For Research Use only

## Handling

Format: Lyophilized

Reconstitution: 50 µL double distilled water (DDW).

Concentration: 1 mg/mL

Buffer: Reconstituted antibody contains phosphate buffered saline (PBS), pH 7.4, 1 % BSA, 0.05 % Sodium azide.

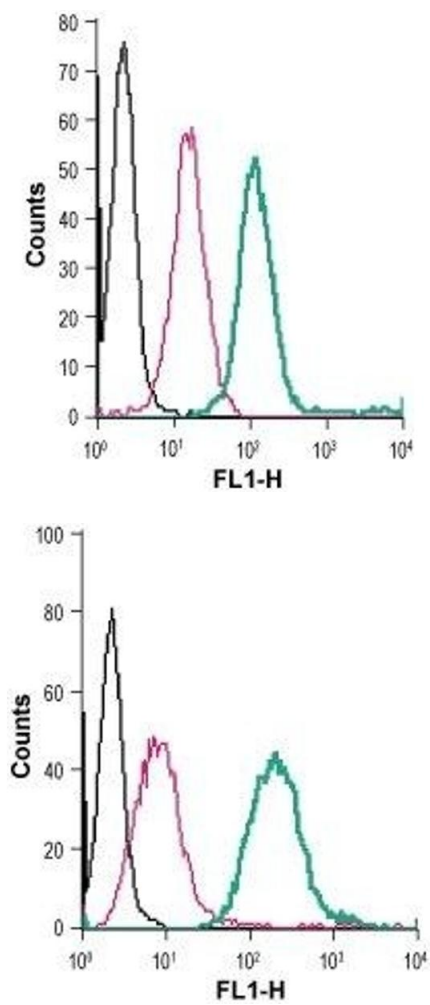
Preservative: Sodium azide

Precaution of Use: This product contains Sodium azide: a POISONOUS AND HAZARDOUS SUBSTANCE which should be handled by trained staff only.

Storage: RT, 4 °C, -20 °C

Storage Comment: Storage before reconstitution: The antibody ships as a lyophilized powder at room temperature. Upon arrival, it should be stored at -20°C.  
Storage after reconstitution: The reconstituted solution can be stored at 4°C, protected from the light, for up to 1 week. For longer periods, small aliquots should be stored at -20°C. Avoid

multiple freezing and thawing. Centrifuge all antibody preparations before use (10000 x g 5 min).



Flow Cytometry

**Image 1.** Cell surface detection of Sortilin in live intact human THP-1 monocytic leukemia cells: (black line) Cells.(red line) Cells + Rabbit IgG isotype control-FITC.(green line) Cells + Anti-Sortilin (extracellular)-FITC Antibody (ABIN7043769, ABIN7045618, ABIN7045619 and ABIN7045620), (2.5 µg).

Flow Cytometry

**Image 2.** Cell surface detection of Sortilin in live intact mouse J774 macrophage cells: (black line) Cells.(red line) Cells + Rabbit IgG isotype control-FITC.(green line) Cells + Anti-Sortilin (extracellular)-FITC Antibody (ABIN7043769, ABIN7045618, ABIN7045619 and ABIN7045620), (2.5 µg).