



[Go to Product page](#)

Datasheet for ABIN7043770

anti-SORL1 antibody (Extracellular, N-Term)

5 Images

Overview

Quantity:	0.2 mL
Target:	SORL1
Binding Specificity:	AA 652-665, Extracellular, N-Term
Reactivity:	Human, Mouse, Rat
Host:	Rabbit
Clonality:	Polyclonal
Conjugate:	This SORL1 antibody is un-conjugated
Application:	Western Blotting (WB), Immunohistochemistry (IHC), Flow Cytometry (FACS)

Product Details

Immunogen:	Immunogen: Synthetic peptide Immunogen Sequence: (C)KRRTPHAT(S)FNGED, corresponding to amino acid residues 652 - 665 of human SORL1
Isotype:	IgG
Characteristics:	Anti-SORL1 (extracellular) Antibody (ABIN7043770, ABIN7044728 and ABIN7044729)) is a highly specific antibody directed against an epitope of the human protein. The antibody can be used in western blot and live cell flow cytometry applications. It has been designed to recognize SORL1 from human, rat, and mouse samples.
Purification:	Affinity purified on immobilized antigen.

Target Details

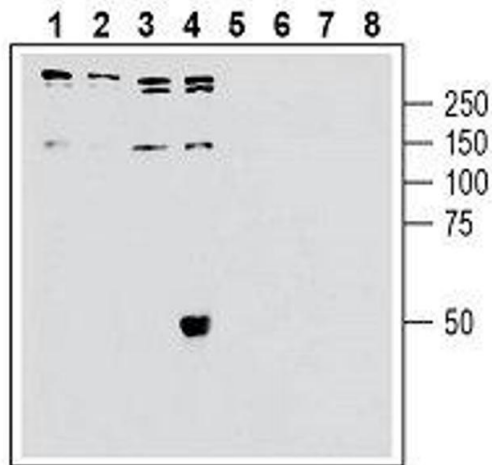
Target:	SORL1
Alternative Name:	SORL1 (SORL1 Products)
Background:	Alternative names: Sortilin Related Receptor 1, Low-Density Lipoprotein Receptor relative with 11 Ligand-Binding Repeats, LR11, Sorting Protein-Related Receptor Containing LDLR Class A Repeats, SORLA
Gene ID:	42648
NCBI Accession:	NM_003105
UniProt:	Q92673
Pathways:	Smooth Muscle Cell Migration

Application Details

Application Notes:	Optimal working dilution should be determined by the investigator.
Restrictions:	For Research Use only

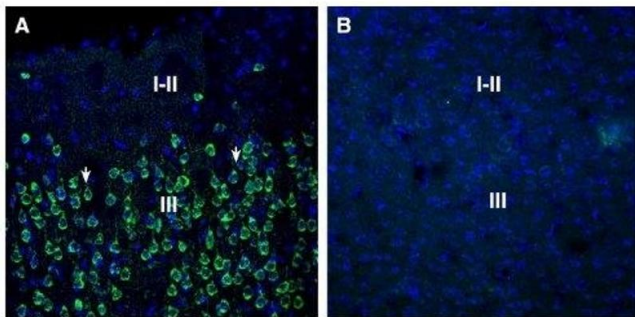
Handling

Format:	Lyophilized
Reconstitution:	25 µL, 50 µL or 0.2 mL double distilled water (DDW), depending on the sample size.
Concentration:	0.8 mg/mL
Buffer:	Reconstituted antibody contains phosphate buffered saline (PBS), pH 7.4, 1 % BSA, 0.05 % Sodium azide.
Preservative:	Sodium azide
Precaution of Use:	This product contains Sodium azide: a POISONOUS AND HAZARDOUS SUBSTANCE which should be handled by trained staff only.
Storage:	RT, 4 °C, -20 °C
Storage Comment:	Storage before reconstitution: The antibody ships as a lyophilized powder at room temperature. Upon arrival, it should be stored at -20°C. Storage after reconstitution: The reconstituted solution can be stored at 4°C for up to 1 week. For longer periods, small aliquots should be stored at -20°C. Avoid multiple freezing and thawing. Centrifuge all antibody preparations before use (10000 x g 5 min).



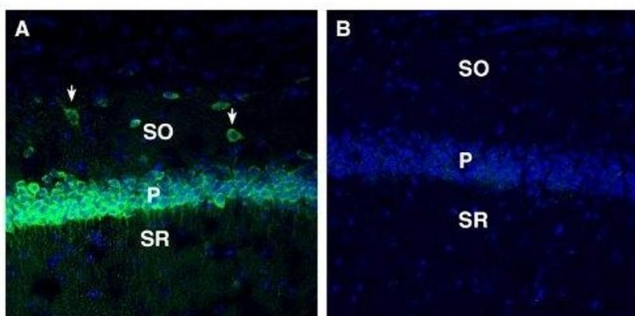
Western Blotting

Image 1. Western blot analysis of human Jurkat T-cell leukemia cell line lysate (lanes 1 and 5), human SH-SY5Y neuroblastoma cell line lysate (lanes 2 and 6), human Colo-205 colon adenocarcinoma cell line lysate (lanes 3 and 7) and HepG2 hepatocellular carcinoma (lanes 4 and 8): - 1-4. Anti-SORL1 (extracellular) Antibody (ABIN7043770, ABIN7044728 and ABIN7044729), (1:200). 5-8. Anti-SORL1 (extracellular) Antibody, preincubated with SORL1 (extracellular) Blocking Peptide (#BLP-NR132).



Immunohistochemistry

Image 2. Expression of SORL1 in rat parietal cortex. - Immunohistochemical staining of perfusion-fixed frozen rat brain sections with Anti-SORL1 (extracellular) Antibody (ABIN7043770, ABIN7044728 and ABIN7044729), (1:300), followed by goat anti-rabbit-AlexaFluor-488. A. SORL1 immunoreactivity (green) appears in neuronal profiles in layer III (arrows). B. Pre-incubation of the antibody with SORL1 (extracellular) Blocking Peptide (BLP-NR132), suppressed staining. Cell nuclei are stained with DAPI (blue).



Immunohistochemistry

Image 3. Expression of SORL1 in mouse hippocampus. - Immunohistochemical staining of perfusion-fixed frozen mouse brain sections with Anti-SORL1 (extracellular) Antibody (ABIN7043770, ABIN7044728 and ABIN7044729), (1:300), followed by goat anti-rabbit-AlexaFluor-488. A. Staining in mouse hippocampal CA1 region revealed SORL1 immunoreactivity (green) in neuronal profiles in the pyramidal layer (P) and in the stratum oriens (SO, arrows). B. Pre-incubation of the antibody with SORL1 (extracellular) Blocking Peptide (BLP-NR132), suppressed staining. Cell nuclei are stained with DAPI (blue). P = pyramidal layer, SO = stratum oriens, SR = stratum radiatum.

Images

Please check the [product details page](#) for more images. Overall 5 images are available for ABIN7043770.