

Datasheet for ABIN7043773

**anti-S1PR2 antibody (2nd Cytoplasmic Loop)****2** Images[Go to Product page](#)

## Overview

Quantity:	25 µL
Target:	S1PR2
Binding Specificity:	2nd Cytoplasmic Loop, AA 129-146
Reactivity:	Human, Mouse, Rat
Host:	Rabbit
Clonality:	Polyclonal
Conjugate:	This S1PR2 antibody is un-conjugated
Application:	Western Blotting (WB), Immunohistochemistry (IHC)

## Product Details

Immunogen:	Immunogen: Synthetic peptide
	Immunogen Sequence: ERQVALAKVKLYGSDKSC, corresponding to amino acid residues 129-146 of mouse S1PR2
Isotype:	IgG
Characteristics:	Anti-S1PR2 (EDG5) Antibody is directed against an intracellular epitope of mouse sphingosine 1-phosphate receptor 2. Anti-S1PR2 (EDG5) Antibody (ABIN7043773, ABIN7045272 and ABIN7045273)) can be used in western blot and immunohistochemistry applications. It has been designed to recognize S1PR2 from mouse, rat and human samples.
Purification:	Affinity purified on immobilized antigen.

## Target Details

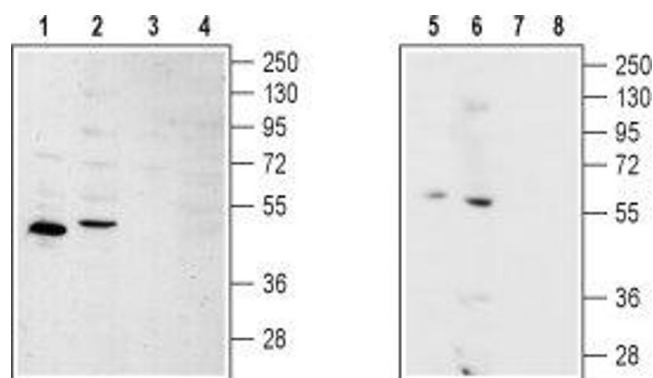
Target:	S1PR2
Alternative Name:	S1PR2 (EDG5) ( <a href="#">S1PR2 Products</a> )
Background:	Alternative names: S1PR2 (EDG5), Sphingosine 1-phosphate receptor 2, S1P2, Endothelial differentiation G-protein coupled receptor 5, Lysophospholipid receptor B2, LPB2
Gene ID:	14739
NCBI Accession:	<a href="#">NM_004230</a>
UniProt:	<a href="#">P52592</a>
Pathways:	<a href="#">Synaptic Membrane</a>

## Application Details

Application Notes:	Optimal working dilution should be determined by the investigator.
Restrictions:	For Research Use only

## Handling

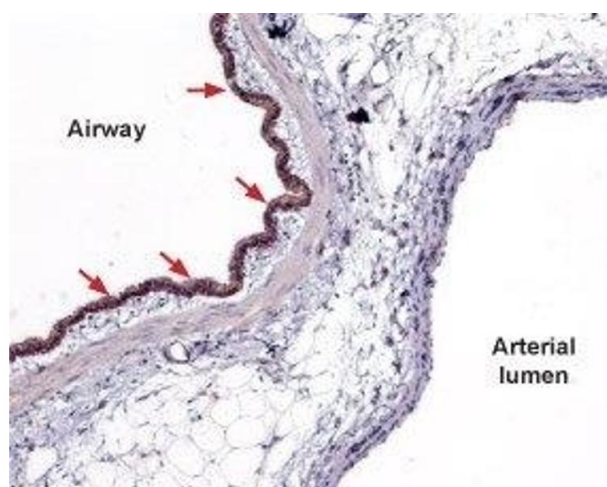
Format:	Lyophilized
Reconstitution:	25 µL, 50 µL or 0.2 mL double distilled water (DDW), depending on the sample size.
Concentration:	0.95 mg/mL
Buffer:	Reconstituted antibody contains phosphate buffered saline (PBS), pH 7.4, 1 % BSA, 0.05 % Sodium azide.
Preservative:	Sodium azide
Precaution of Use:	This product contains Sodium azide: a POISONOUS AND HAZARDOUS SUBSTANCE which should be handled by trained staff only.
Storage:	RT, 4 °C, -20 °C
Storage Comment:	<p>Storage before reconstitution: The antibody ships as a lyophilized powder at room temperature. Upon arrival, it should be stored at -20°C.</p> <p>Storage after reconstitution: The reconstituted solution can be stored at 4°C for up to 1 week. For longer periods, small aliquots should be stored at -20°C. Avoid multiple freezing and thawing. Centrifuge all antibody preparations before use (10000 x g 5 min).</p>



### Western Blotting

**Image 1.** Western blot analysis of rat kidney (lanes 1 and 3), rat heart (lanes 2 and 4), human SH-SY5Y brain neuroblastoma (lanes 5 and 7) and Human MS-1 neuroendocrine skin carcinoma cell (lanes 6 and 8) lysates:

- 1,2,5,6. Anti-S1PR2 (EDG5) Antibody (ABIN7043773, ABIN7045272 and ABIN7045273), (1:200).
- 3,4,7,8. Anti-S1PR2 (EDG5) Antibody, preincubated with S1PR2/EDG5 Blocking Peptide (#BLP-SR012).



### Immunohistochemistry

**Image 2.** Expression of Sphingosine 1-phosphate receptor 2 in rat lung - Immunohistochemical staining of paraffin embedded rat lung sections using Anti-S1PR2 (EDG5) Antibody (ABIN7043773, ABIN7045272 and ABIN7045273), (1:100). S1PR2 is expressed in respiratory epithelium (red arrows). Hematoxylin is used as the counterstain.