

Datasheet for ABIN7043774
anti-S1PR3 antibody (Extracellular, N-Term)



[Go to Product page](#)

2 Images

Overview

Quantity:	50 µL
Target:	S1PR3
Binding Specificity:	AA 23-34, Extracellular, N-Term
Reactivity:	Human, Mouse, Rat
Host:	Rabbit
Clonality:	Polyclonal
Conjugate:	This S1PR3 antibody is un-conjugated
Application:	Western Blotting (WB), Flow Cytometry (FACS)

Product Details

Immunogen:	Immunogen: Synthetic peptide Immunogen Sequence: (C)DYVGKLAGRLRD, corresponding to amino acid residues 23-34 of mouse S1PR3
Isotype:	IgG
Characteristics:	Anti-S1PR3 (EDG3) (extracellular) Antibody (ABIN7043774, ABIN7045274 and ABIN7045275) is a highly specific antibody directed against an extracellular epitope of mouse sphingosine 1-phosphate receptor 3. The antibody can be used in western blot and indirect flow cytometry applications. It has been designed to recognize S1PR3 from human, rat and mouse samples.
Purification:	Affinity purified on immobilized antigen.

Target Details

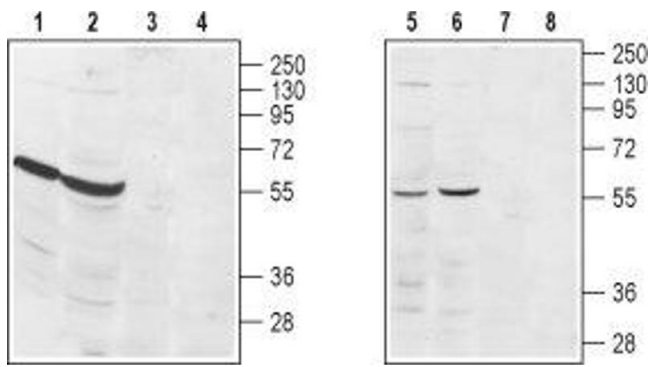
Target:	S1PR3
Alternative Name:	S1PR3 (EDG3) (S1PR3 Products)
Background:	Alternative names: S1PR3 (EDG3), Sphingosine 1-phosphate receptor 3, S1P3, Endothelial differentiation G-protein coupled receptor 3, Lysophospholipid receptor B3, LPB3
Gene ID:	13610
NCBI Accession:	NM_005226
UniProt:	Q9Z0U9

Application Details

Application Notes:	Optimal working dilution should be determined by the investigator.
Restrictions:	For Research Use only

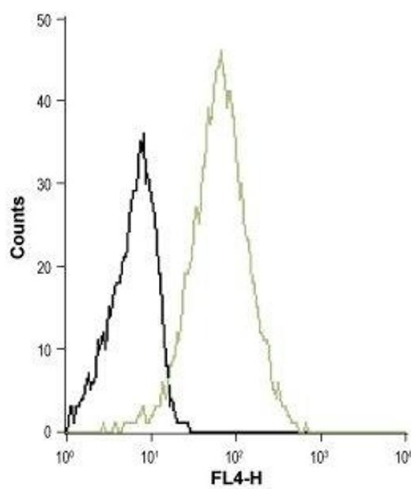
Handling

Format:	Lyophilized
Reconstitution:	50 µL or 0.2 mL double distilled water (DDW), depending on the sample size.
Concentration:	0.8 mg/mL
Buffer:	Reconstituted antibody contains phosphate buffered saline (PBS), pH 7.4, 1 % BSA, 0.05 % Sodium azide.
Preservative:	Sodium azide
Precaution of Use:	This product contains Sodium azide: a POISONOUS AND HAZARDOUS SUBSTANCE which should be handled by trained staff only.
Storage:	RT, 4 °C, -20 °C
Storage Comment:	<p>Storage before reconstitution: The antibody ships as a lyophilized powder at room temperature. Upon arrival, it should be stored at -20°C.</p> <p>Storage after reconstitution: The reconstituted solution can be stored at 4°C for up to 1 week. For longer periods, small aliquots should be stored at -20°C. Avoid multiple freezing and thawing. Centrifuge all antibody preparations before use (10000 x g 5 min).</p>



Western Blotting

Image 1. Western blot analysis of rat heart (lanes 1 and 3), rat kidney (lanes 2 and 4), human Jurkat acute T cell leukemia (lanes 5 and 7) and mouse WEHI B cell lymphoma (lanes 6 and 8) lysates: - 1,2,5,6. Anti-S1PR3 (EDG3) (extracellular) Antibody (ABIN7043774, ABIN7045274 and ABIN7045275), (1:200).3,4,7,8. Anti-S1PR3 (EDG3) (extracellular) Antibody, preincubated with S1PR3/EDG3 (extracellular) Blocking Peptide (#BLP-SR013).



Flow Cytometry

Image 2. Cell surface detection of S1PR3 in Raji (human Burkitt's lymphoma) living cells: (black line) Unstained cells. (green line) Cells stained with Anti-S1PR3 (EDG3) (extracellular) Antibody (ABIN7043774, ABIN7045274 and ABIN7045275), (5 µg/5x10⁵ cells).