

Datasheet for ABIN7043776

**anti-S1PR3 antibody (Extracellular, N-Term) (FITC)**[Go to Product page](#)**2** Images

## Overview

Quantity:	50 µL
Target:	S1PR3
Binding Specificity:	AA 23-34, Extracellular, N-Term
Reactivity:	Human, Mouse, Rat
Host:	Rabbit
Clonality:	Polyclonal
Conjugate:	This S1PR3 antibody is conjugated to FITC
Application:	Flow Cytometry (FACS)

## Product Details

Immunogen:	Immunogen: Synthetic peptide Immunogen Sequence: (C)DYVGKLAGRLRD, corresponding to amino acid residues 23-34 of mouse S1PR3
Isotype:	IgG
Characteristics:	Anti-S1PR3 (EDG3) (extracellular) Antibody (ABIN7043774, ABIN7045274 and ABIN7045275)) is a highly specific antibody directed against an extracellular epitope of mouse sphingosine 1-phosphate receptor 3. The antibody can be used in western blot and indirect flow cytometry applications. It has been designed to recognize S1PR3 from human, rat and mouse samples. Anti-S1PR3 (EDG3) (extracellular)-FITC Antibody (ABIN7043774, ABIN7045274 and ABIN7045275)-F) is directly conjugated to fluorescein isothiocyanate (FITC). The antibody can be used in immunofluorescent applications such as direct live cell flow cytometry.

## Product Details

---

Purification: Affinity purified on immobilized antigen.

## Target Details

---

Target: S1PR3

Alternative Name: S1PR3 (EDG3) ([S1PR3 Products](#))

Background: Alternative names: S1PR3 (EDG3), Sphingosine 1-phosphate receptor 3, S1P3, Endothelial differentiation G-protein coupled receptor 3, Lysophospholipid receptor B3, LPB3

Gene ID: 13610

NCBI Accession: [NM\\_005226](#)

UniProt: [Q9Z0U9](#)

## Application Details

---

Application Notes: Optimal working dilution should be determined by the investigator.

Restrictions: For Research Use only

## Handling

---

Format: Lyophilized

Reconstitution: 50 µL double distilled water (DDW).

Concentration: 1 mg/mL

Buffer: Reconstituted antibody contains phosphate buffered saline (PBS), pH 7.4, 1 % BSA, 0.05 % Sodium azide.

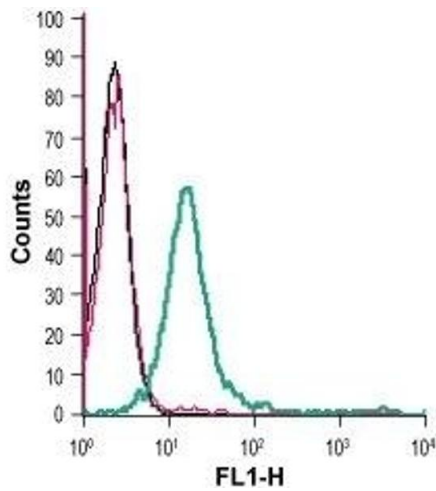
Preservative: Sodium azide

Precaution of Use: This product contains Sodium azide: a POISONOUS AND HAZARDOUS SUBSTANCE which should be handled by trained staff only.

Storage: RT, 4 °C, -20 °C

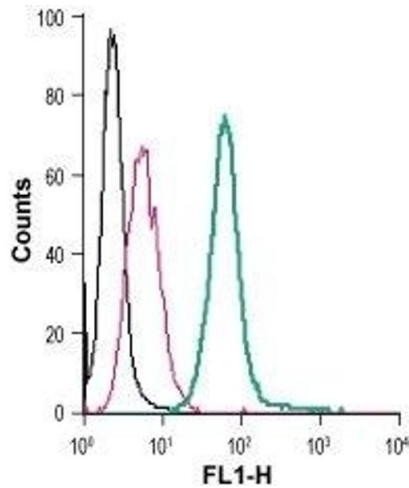
Storage Comment: Storage before reconstitution: The antibody ships as a lyophilized powder at room temperature. Upon arrival, it should be stored at -20°C.  
Storage after reconstitution: The reconstituted solution can be stored at 4°C, protected from the light, for up to 1 week. For longer periods, small aliquots should be stored at -20°C. Avoid multiple freezing and thawing. Centrifuge all antibody preparations before use (10000 x g 5

min).



#### Flow Cytometry

**Image 1.** Cell surface detection of S1PR3 in live intact human Jurkat T-cell leukemia cells: (black line) Cells.(red line) Cells + Rabbit IgG isotype control-FITC.(green line) Cells + Anti-S1PR3 (EDG3) (extracellular)-FITC Antibody (ABIN7043776, ABIN7045704, ABIN7045705 and ABIN7045706), (5 µg).



#### Flow Cytometry

**Image 2.** Cell surface detection of S1PR3 in live intact mouse J774 macrophage cells: (black line) Cells.(red line) Cells + Rabbit IgG isotype control-FITC.(green line) Cells + Anti-S1PR3 (EDG3) (extracellular)-FITC Antibody (ABIN7043776, ABIN7045704, ABIN7045705 and ABIN7045706), (2.5 µg).