

Datasheet for ABIN7043778

**anti-STOML1 antibody (Extracellular, N-Term)**[Go to Product page](#)**2** Images

## Overview

Quantity:	25 µL
Target:	STOML1
Binding Specificity:	AA 4-17, Extracellular, N-Term
Reactivity:	Human, Mouse, Rat
Host:	Rabbit
Clonality:	Polyclonal
Conjugate:	This STOML1 antibody is un-conjugated
Application:	Western Blotting (WB)

## Product Details

Immunogen:	Immunogen: Synthetic peptide Immunogen Sequence: (C)RSGYRALPLGDFDR, corresponding to amino acid residues 4-17 of mouse STOML1
Isotype:	IgG
Characteristics:	Anti-Stomatin-like Protein 1 (extracellular) Antibody (ABIN7043778, ABIN7044516 and ABIN7044517)) is a highly specific antibody directed against an epitope of the mouse protein. The antibody can be used in western blot analysis. The antibody recognizes an extracellular epitope and can potentially be used for detecting the protein in living cells. It has been designed to recognize STOML1 from human, mouse, and rat samples.
Purification:	Affinity purified on immobilized antigen.

## Target Details

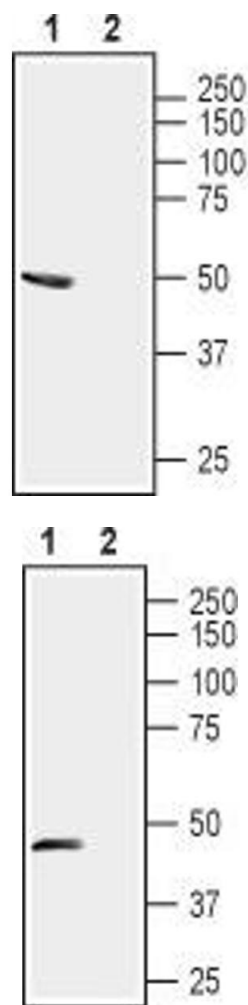
Target:	STOML1
Alternative Name:	Stomatin-like Protein 1 ( <a href="#">STOML1 Products</a> )
Background:	Alternative names: Stomatin-like Protein 1, STOML1, SLP-1, STORP, Slipin-1, hUNC-24
Gene ID:	69106
NCBI Accession:	<a href="#">NM_004809</a>
UniProt:	<a href="#">Q8CI66</a>

## Application Details

Application Notes:	Optimal working dilution should be determined by the investigator.
Restrictions:	For Research Use only

## Handling

Format:	Lyophilized
Reconstitution:	25 µL, 50 µL or 0.2 mL double distilled water (DDW), depending on the sample size.
Concentration:	0.8 mg/mL
Buffer:	Reconstituted antibody contains phosphate buffered saline (PBS), pH 7.4, 1 % BSA, 0.05 % Sodium azide.
Preservative:	Sodium azide
Precaution of Use:	This product contains Sodium azide: a POISONOUS AND HAZARDOUS SUBSTANCE which should be handled by trained staff only.
Storage:	RT, 4 °C, -20 °C
Storage Comment:	<p>Storage before reconstitution: The antibody ships as a lyophilized powder at room temperature. Upon arrival, it should be stored at -20°C.</p> <p>Storage after reconstitution: The reconstituted solution can be stored at 4°C for up to 1 week. For longer periods, small aliquots should be stored at -20°C. Avoid multiple freezing and thawing. Centrifuge all antibody preparations before use (10000 x g 5 min).</p>



#### Western Blotting

**Image 1.** Western blot analysis of mouse brain lysates: - 1. Anti-Stomatin-like Protein 1 (extracellular) Antibody (ABIN7043778, ABIN7044516 and ABIN7044517), (1:800). 2. Anti-Stomatin-like Protein 1 (extracellular) Antibody, preincubated with Stomatin-like Protein 1 (extracellular) Blocking Peptide (#BLP-IP001).

#### Western Blotting

**Image 2.** Western blot analysis of rat dorsal root ganglia lysates: - 1. Anti-Stomatin-like Protein 1 (extracellular) Antibody (ABIN7043778, ABIN7044516 and ABIN7044517), (1:500). 2. Anti-Stomatin-like Protein 1 (extracellular) Antibody, preincubated with Stomatin-like Protein 1 (extracellular) Blocking Peptide (#BLP-IP001).