

Datasheet for ABIN7043779

## anti-STOML2 antibody (Intracellular)



[Go to Product page](#)

### 2 Images

#### Overview

Quantity:	50 µL
Target:	STOML2
Binding Specificity:	AA 208-222, Intracellular
Reactivity:	Rat
Host:	Rabbit
Clonality:	Polyclonal
Conjugate:	This STOML2 antibody is un-conjugated
Application:	Western Blotting (WB)

#### Product Details

Purpose:	A Rabbit Polyclonal Antibody to Stomatin-like Protein 2
Immunogen:	Immunogen: Synthetic peptide Immunogen Sequence: (C)EGTRESAINVAEGKK, corresponding to amino acid residues 208-222 of rat Stomatin-like protein 2
Isotype:	IgG
Specificity:	Intracellular
Cross-Reactivity:	Human, Mouse, Rat
Predicted Reactivity:	Mouse,human - identical
Characteristics:	Anti-STOML2/SLP-2 Antibody (ABIN7043779, ABIN7044518 and ABIN7044519)) is a highly specific antibody directed against an epitope of the rat protein. The antibody can be used in

## Product Details

western blot analysis. It has been designed to recognize Stomatin-like protein 2 from human, rat, and mouse samples.

Purification: Affinity purified on immobilized antigen.

## Target Details

Target: STOML2

Alternative Name: STOML2 ([STOML2 Products](#))

Background: Paraprotein target 7, EPB72-like protein 2, Stomatin-like protein 2, Stomatin-like protein 2 (STOML2, SLP-2) is a key protein on the mitochondrial inner membrane and a member of the stomatin superfamily. STOML2 is widely expressed in human tissues such as the brain, lung, and kidneys and interacts with prohibitin-1 and 2. It plays an important role in numerous physiological processes including organizing sphingolipid and cholesterol-rich lipid rafts, regulating ion channel conductance, and linking other integral membrane proteins to the peripheral cytoskeleton<sup>1,2</sup>. STOML2 shares a consensus stomatin signature sequence that defines the stomatin gene family. However, it lacks a NH<sub>2</sub>-terminal hydrophobic domain shared by other members<sup>3</sup>. Studies show that STOML2 expression is upregulated in various human cancer tissues including gastric cancer, endometrial adenocarcinoma, and breast cancer. The protein may play an important role in the incidence and development of tumor and it is suggested that SLP-2 is a potential oncogene. Knockdown of STOML2 protein significantly restrains the viability, migration, and invasion of hepatoma cell line<sup>1,2</sup>.

Alternative names: STOML2/SLP-2, Paraprotein target 7, EPB72-like protein 2, Stomatin-like protein 2

Gene ID: 298203

NCBI Accession: [NM\\_013442](#)

UniProt: [Q4FZT0](#)

Pathways: [SARS-CoV-2 Protein Interactome](#), [The Global Phosphorylation Landscape of SARS-CoV-2 Infection](#)

## Application Details

Application Notes: Antigen preadsorption control: 1 µg peptide per 1 µg antibody

Application Dilutions Immunohistochemistry paraffin embedded sections ihc: N/A

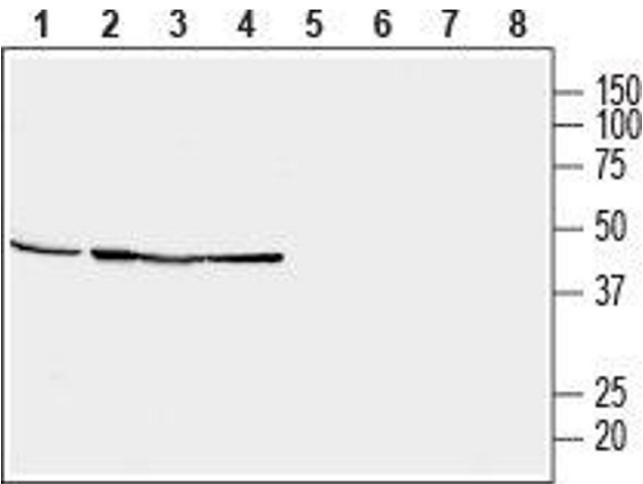
Application Details

	Application Dilutions Western blot wb: 1:400-1:800
Comment:	Negative Control: BLP-IP002 Blocking Peptide: BLP-IP002
Restrictions:	For Research Use only

Handling

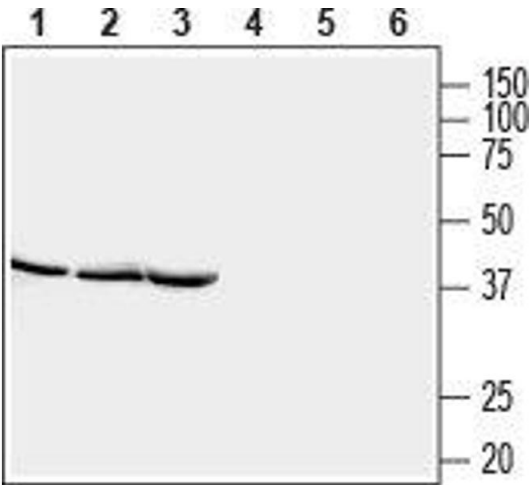
Format:	Lyophilized
Reconstitution:	Reconstitute with double distilled water (DDW) to a concentration of 1.0 mg/mL.
Concentration:	1 mg/mL
Buffer:	PBS pH 7.4
Storage:	4 °C,-20 °C
Storage Comment:	Storage before reconstitution: The antibody ships as a lyophilized powder at room temperature. Upon arrival, it should be stored at -20°C.  Storage after reconstitution: The reconstituted solution can be stored at 4°C for up to 1 week. For longer periods, small aliquots should be stored at -20°C. Avoid multiple freezing and thawing. Centrifuge all antibody preparations before use (10000 x g 5 min).

Images



Western Blotting

**Image 1.** Western blot analysis of human brain neuroblastoma SH-SY5Y (lanes 1 and 5), human prostate carcinoma DU 145 (lanes 2 and 6), human pancreatic carcinoma PANC-1 (lanes 3 and 7) and human acute lymphoblastic leukemia MOLT-4 (lanes 4 and 8): - 1-4. Anti-STOML2/SLP-2 Antibody (ABIN7043779, ABIN7044518 and ABIN7044519), (1:800).5-8. Anti-STOML2/SLP-2 Antibody, preincubated with STOML2/SLP-2 Blocking Peptide (#BLP-IP002).



Western Blotting

**Image 2.** Western blot analysis of rat brain lysate (lanes 1 and 4), mouse brain lysate (lanes 2 and 5) and rat skeletal muscle lysate (lanes 3 and 6): - 1-3. Anti-STOML2/SLP-2 Antibody (ABIN7043779, ABIN7044518 and ABIN7044519), (1:400).4-6. Anti-STOML2/SLP-2 Antibody, preincubated with STOML2/SLP-2 Blocking Peptide (#BLP-IP002).