

Datasheet for ABIN7043781

**anti-STIM1 antibody (Extracellular, N-Term)**

## 4 Images

[Go to Product page](#)

## Overview

Quantity:	25 µL
Target:	STIM1
Binding Specificity:	AA 56-69, Extracellular, N-Term
Reactivity:	Human, Rat, Mouse
Host:	Rabbit
Clonality:	Polyclonal
Application:	Western Blotting (WB), Immunohistochemistry (IHC), Immunoprecipitation (IP), Immunofluorescence (IF), Immunocytochemistry (ICC), Flow Cytometry (FACS), Live Cell Imaging (LCI)

## Product Details

Immunogen:	Immunogen: Synthetic peptide Immunogen Sequence: CHSEDEKLSFEAVR, corresponding to amino acid residues 56-69 of human STIM1
Isotype:	IgG
Characteristics:	Anti-STIM1 (extracellular) Antibody (ABIN7043781, ABIN7044026 and ABIN7044027)) is a highly specific antibody directed against an epitope of the human Stromal interaction molecule 1. The antibody can be used in western blot, immunocytochemistry, immunohistochemistry, and indirect flow cytometry applications. It has been designed to recognize STIM1 from human, rat, and mouse samples.
Purification:	Affinity purified on immobilized antigen.

## Target Details

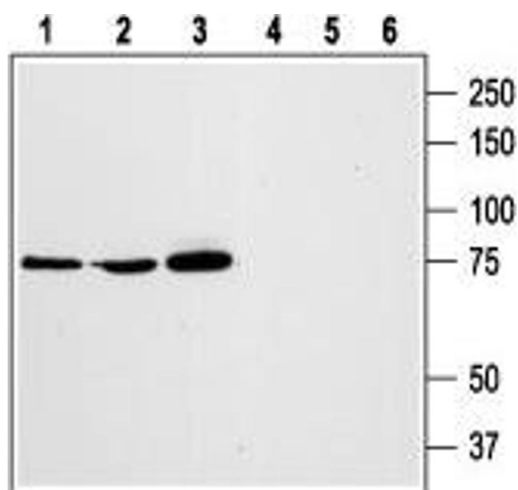
Target:	STIM1
Alternative Name:	STIM1 ( <a href="#">STIM1 Products</a> )
Background:	Alternative names: STIM1, Stromal interaction molecule 1, GOK
Gene ID:	6786
NCBI Accession:	<a href="#">NM_003156</a>
UniProt:	<a href="#">Q13586</a>
Pathways:	<a href="#">TCR Signaling</a> , <a href="#">BCR Signaling</a>

## Application Details

Application Notes:	Optimal working dilution should be determined by the investigator.
Restrictions:	For Research Use only

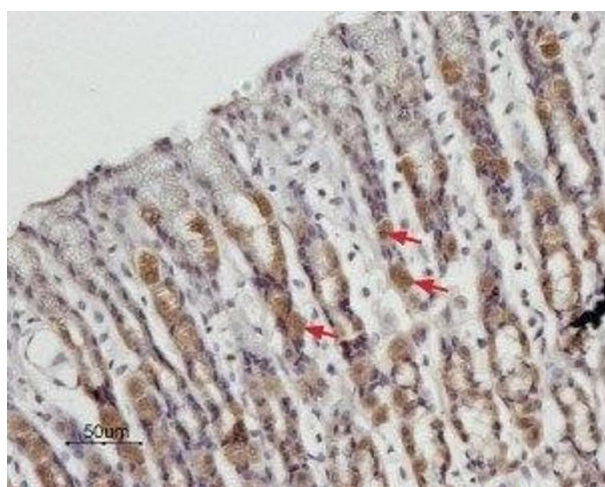
## Handling

Format:	Lyophilized
Reconstitution:	25 µL, 50 µL or 0.2 mL double distilled water (DDW), depending on the sample size.
Concentration:	0.45 mg/mL
Buffer:	Reconstituted antibody contains phosphate buffered saline (PBS), pH 7.4, 1 % BSA, 0.05 % Sodium azide.
Preservative:	Sodium azide
Precaution of Use:	This product contains Sodium azide: a POISONOUS AND HAZARDOUS SUBSTANCE which should be handled by trained staff only.
Storage:	RT, 4 °C, -20 °C
Storage Comment:	<p>Storage before reconstitution: The antibody ships as a lyophilized powder at room temperature. Upon arrival, it should be stored at -20°C.</p> <p>Storage after reconstitution: The reconstituted solution can be stored at 4°C for up to 1 week. For longer periods, small aliquots should be stored at -20°C. Avoid multiple freezing and thawing. Centrifuge all antibody preparations before use (10000 x g 5 min).</p>



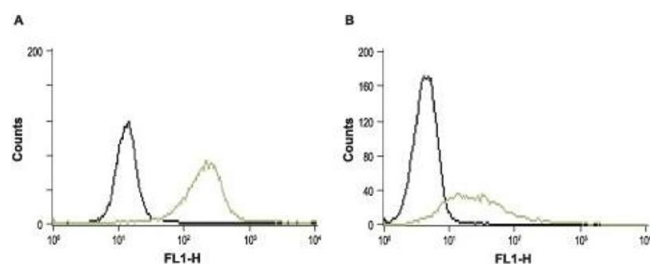
### Western Blotting

**Image 1.** Western blot analysis of rat RBL basophilic leukemia (lanes 1 and 4), human HL-60 promyelocytic leukemia (lanes 2 and 5), and human Jurkat T-cell leukemia (lanes 3 and 6) cell lysates: - 1,2,3. Anti-STIM1 (extracellular) Antibody (ABIN7043781, ABIN7044026 and ABIN7044027), (1:1000).4,5,6. Anti-STIM1 (extracellular) Antibody, preincubated with STIM1 (extracellular) Blocking Peptide (#BLP-CC063).



### Immunohistochemistry

**Image 2.** Expression of STIM1 in rat stomach - Immunohistochemical staining of paraffin embedded rat stomach sections using Anti-STIM1 (extracellular) Antibody (ABIN7043781, ABIN7044026 and ABIN7044027), (1:100). STIM1 is expressed in the parietal cells of the gastric mucosa (arrows). Hematoxylin is used as the counterstain.



### Flow Cytometry

**Image 3.** Cell surface detection of STIM1 in intact RBL (A) and Jurkat (B) cells. (black line) Cells + FITC-conjugated goat anti-rabbit antibody. (green line) Cells + Anti-STIM1 (extracellular) Antibody (ABIN7043781, ABIN7044026 and ABIN7044027), (5-10 μg antibody/0.5-1x 10<sup>6</sup> cells) + FITC-conjugated goat anti-rabbit antibody.

Please check the [product details page](#) for more images. Overall 4 images are available for ABIN7043781.