

Datasheet for ABIN7043782
anti-Stim2 antibody (C-Term, Intracellular)

3 Images

[Go to Product page](#)

Overview

Quantity:	25 µL
Target:	Stim2
Binding Specificity:	AA 583-597, C-Term, Intracellular
Reactivity:	Human, Mouse, Rat
Host:	Rabbit
Clonality:	Polyclonal
Application:	Western Blotting (WB), Immunohistochemistry (IHC), Immunofluorescence (IF), Immunocytochemistry (ICC)

Product Details

Immunogen:	Immunogen: Synthetic peptide Immunogen Sequence: SAEKQWEVPDTASEC, corresponding to amino acid residues 583-597 of human STIM2
Isotype:	IgG
Characteristics:	Anti-STIM2 Antibody (ABIN7043782, ABIN7044028 and ABIN7044029)) is a highly specific antibody directed against an epitope of the mouse protein. The antibody can be used in western blot, immunocytochemistry, and immunohistochemistry applications. It has been designed to recognize STIM2 from human, rat, and mouse samples.
Purification:	Affinity purified on immobilized antigen.

Target Details

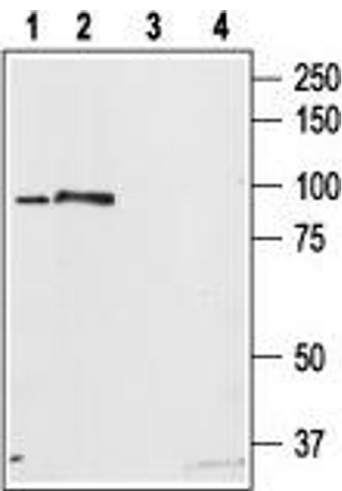
Target:	Stim2
Alternative Name:	STIM2 (Stim2 Products)
Background:	Alternative names: STIM2, Stromal interaction molecule 2
Gene ID:	57620
NCBI Accession:	NM_020860
UniProt:	Q9P246
Pathways:	TCR Signaling , BCR Signaling

Application Details

Application Notes:	Optimal working dilution should be determined by the investigator.
Restrictions:	For Research Use only

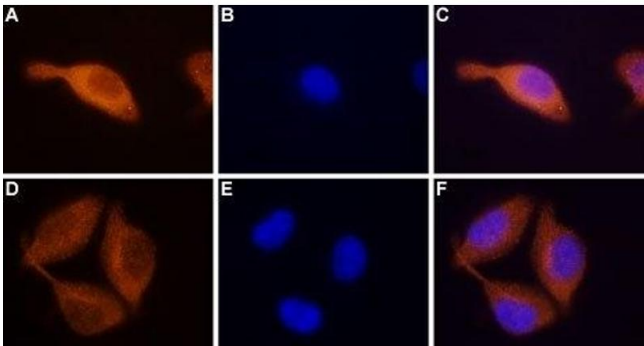
Handling

Format:	Lyophilized
Reconstitution:	25 µL, 50 µL or 0.2 mL double distilled water (DDW), depending on the sample size.
Concentration:	0.8 mg/mL
Buffer:	Reconstituted antibody contains phosphate buffered saline (PBS), pH 7.4, 1 % BSA, 0.05 % Sodium azide.
Preservative:	Sodium azide
Precaution of Use:	This product contains Sodium azide: a POISONOUS AND HAZARDOUS SUBSTANCE which should be handled by trained staff only.
Storage:	RT, 4 °C, -20 °C
Storage Comment:	<p>Storage before reconstitution: The antibody ships as a lyophilized powder at room temperature. Upon arrival, it should be stored at -20°C.</p> <p>Storage after reconstitution: The reconstituted solution can be stored at 4°C for up to 1 week. For longer periods, small aliquots should be stored at -20°C. Avoid multiple freezing and thawing. Centrifuge all antibody preparations before use (10000 x g 5 min).</p>



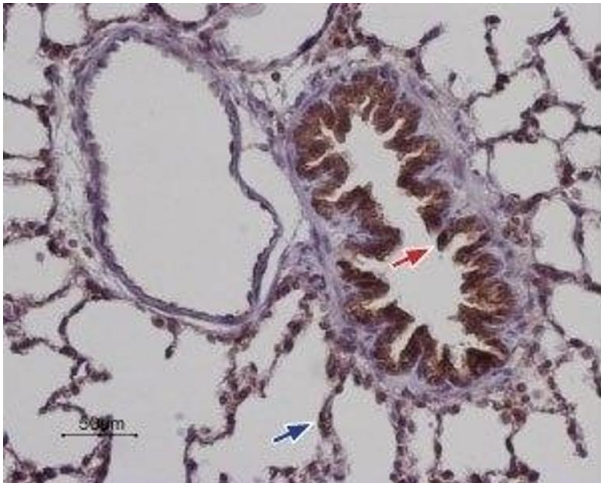
Western Blotting

Image 1. Western blot analysis of rat brain (lanes 1, 3) and rat RBL basophilic leukemia cell (lanes 2, 4) lysates: - 1. Anti-STIM2 Antibody (ABIN7043782, ABIN7044028 and ABIN7044029), (1:200). 2. Anti-STIM2 Antibody, preincubated with STIM2 Blocking Peptide (#BLP-CC064).



Immunocytochemistry

Image 2. Expression of STIM2 in RBL cells - Immunocytochemical staining of paraformaldehyde-fixed and permeabilized rat basophilic leukemia (RBL) cells. A, D. Cells stained with Anti-STIM2 Antibody (ABIN7043782, ABIN7044028 and ABIN7044029), (1:100) followed by goat anti-rabbit-AlexaFluor-555 secondary antibody. B, E. Nuclear staining of cells using the cell-permeable dye Hoechst 33342. C. Merged image of panels A and B. F. Merged image of panels D and E.



Immunohistochemistry

Image 3. Expression of STIM2 in rat lung - Immunohistochemical staining of paraffin embedded rat lung sections using Anti-STIM2 Antibody (ABIN7043782, ABIN7044028 and ABIN7044029), (1:100). Staining is present in the respiratory epithelium of the bronchiole (red) as well as in the pneumonocytes of the alveolar wall (blue). Color reaction was obtained with SuperPicture HRP-conjugated polymer (Zymed) followed by DAB. Hematoxylin is used as the counterstain.