

Datasheet for ABIN7043783

**anti-SUCNR1 antibody (3rd Extracellular Loop)****3** Images[Go to Product page](#)

## Overview

Quantity:	50 µL
Target:	SUCNR1
Binding Specificity:	3rd Extracellular Loop, AA 248-262
Reactivity:	Human, Mouse, Rat
Host:	Rabbit
Clonality:	Polyclonal
Conjugate:	This SUCNR1 antibody is un-conjugated
Application:	Western Blotting (WB), Flow Cytometry (FACS)

## Product Details

Immunogen:	Immunogen: Synthetic peptide Immunogen Sequence: (C)RNVRIASRLDSWPQG, corresponding to amino acid residues 248-262 of rat GPR91/Succinate Receptor 1
Isotype:	IgG
Characteristics:	Anti-GPR91 (SUCNR1) (extracellular) Antibody (ABIN7043783, ABIN7045308 and ABIN7045309)) is a highly specific antibody directed against an epitope of the rat protein. The antibody can be used in western blot and live cell flow cytometry. It has been designed to recognize GPR91 from rat, mouse, and human samples.
Purification:	Affinity purified on immobilized antigen.

## Target Details

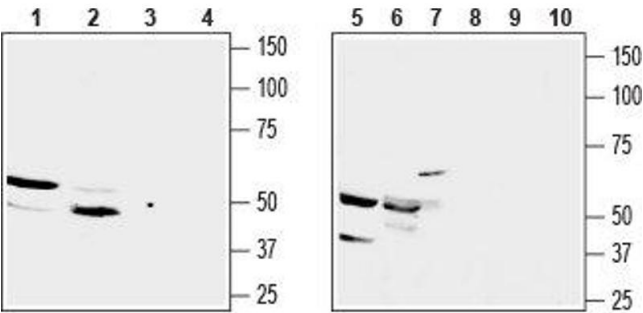
Target:	SUCNR1
Alternative Name:	GPR91 (SUCNR1) ( <a href="#">SUCNR1 Products</a> )
Background:	Alternative names: GPR91 (SUCNR1), G-protein coupled receptor 91, Succinate receptor 1
Gene ID:	408199
NCBI Accession:	<a href="#">NM_033050</a>
UniProt:	<a href="#">Q6IYF9</a>

## Application Details

Application Notes:	Optimal working dilution should be determined by the investigator.
Restrictions:	For Research Use only

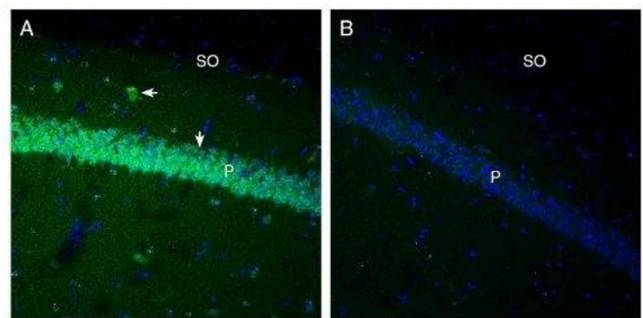
## Handling

Format:	Lyophilized
Reconstitution:	25 µL, 50 µL or 0.2 mL double distilled water (DDW), depending on the sample size.
Concentration:	0.8 mg/mL
Buffer:	Reconstituted antibody contains phosphate buffered saline (PBS), pH 7.4, 1 % BSA, 0.05 % Sodium azide.
Preservative:	Sodium azide
Precaution of Use:	This product contains Sodium azide: a POISONOUS AND HAZARDOUS SUBSTANCE which should be handled by trained staff only.
Storage:	RT, 4 °C, -20 °C
Storage Comment:	<p>Storage before reconstitution: The antibody ships as a lyophilized powder at room temperature. Upon arrival, it should be stored at -20°C.</p> <p>Storage after reconstitution: The reconstituted solution can be stored at 4°C for up to 1 week. For longer periods, small aliquots should be stored at -20°C. Avoid multiple freezing and thawing. Centrifuge all antibody preparations before use (10000 x g 5 min).</p>



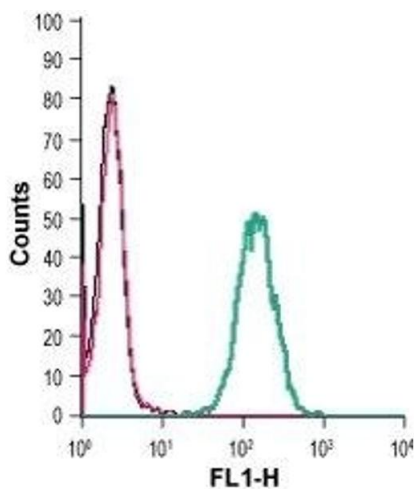
### Western Blotting

**Image 1.** Western blot analysis of rat kidney membrane (lanes 1 and 3), mouse kidney lysate (lanes 2 and 4), mouse TK-1 T-cell lymphoma (lanes 5 and 8), mouse J774 macrophage cell (lanes 6 and 9) and human Jurkat acute T cell leukemia (lanes 7 and 10) lysates: - 1,2,5,6,7. Anti-GPR91 (SUCNR1) (extracellular) Antibody (ABIN7043783, ABIN7045308 and ABIN7045309) (1:200).3,4,8,9,10. Anti-GPR91 (SUCNR1) (extracellular) Antibody, preincubated with GPR91/SUCNR1 (extracellular) Blocking Peptide (#BLP-SR090).



### Immunohistochemistry

**Image 2.** Expression of GPR91 in mouse hippocampus. - Immunohistochemical staining of perfusion-fixed frozen mouse brain sections with Anti-GPR91 (SUCNR1) (extracellular) Antibody (ABIN7043783, ABIN7045308 and ABIN7045309), (1:200), followed by goat anti-rabbit-AlexaFluor-488. A. GPR91 immunoreactivity (green) appears in neuronal profiles in the pyramidal layer (P, vertical arrow) and the stratum oriens (SO, horizontal arrow). B. Pre-incubation of the antibody with GPR91 (SUCNR1) (extracellular) Blocking Peptide (BLP-SR090), suppressed staining. Cell nuclei are stained with DAPI (blue).



### Flow Cytometry

**Image 3.** Cell surface detection of GPR91 in live intact human THP-1 monocytic leukemia cells: (black line) Cells.(red line) Cells + goat-anti-rabbit-FITC.(green line) Cells + Anti-GPR91 (SUCNR1) (extracellular) Antibody (ABIN7043783, ABIN7045308 and ABIN7045309), (2.5 µg/0.5x10<sup>6</sup> cells).