

Datasheet for ABIN7043784

**anti-SUCNR1 antibody (3rd Extracellular Loop) (FITC)**[Go to Product page](#)

## 3 Images

## Overview

Quantity:	50 µL
Target:	SUCNR1
Binding Specificity:	3rd Extracellular Loop, AA 248-262
Reactivity:	Human, Mouse, Rat
Host:	Rabbit
Clonality:	Polyclonal
Conjugate:	This SUCNR1 antibody is conjugated to FITC
Application:	Flow Cytometry (FACS)

## Product Details

Immunogen:	Immunogen: Synthetic peptide Immunogen Sequence: (C)RNVRIASRLDSWPQG, corresponding to amino acid residues 248-262 of rat GPR91
Isotype:	IgG
Characteristics:	Anti-GPR91 (SUCNR1) (extracellular) Antibody (ABIN7043783, ABIN7045308 and ABIN7045309)) is a highly specific antibody directed against an epitope of the rat protein. The antibody can be used in western blot and live cell flow cytometry. It has been designed to recognize GPR91 from rat, mouse, and human samples. \nAnti-GPR91 (SUCNR1) (extracellular)-FITC Antibody (ABIN7043783, ABIN7045308 and ABIN7045309)-F is directly conjugated to fluorescein isothiocyanate (FITC). The antibody can be used in immunofluorescent applications such as direct live cell flow cytometry.

## Product Details

---

Purification: Affinity purified on immobilized antigen.

## Target Details

---

Target: SUCNR1

Alternative Name: GPR91 (SUCNR1) ([SUCNR1 Products](#))

Background: Alternative names: GPR91 (SUCNR1), G-protein coupled receptor 91, Succinate receptor 1

Gene ID: 408199

NCBI Accession: [NM\\_033050](#)

UniProt: [Q6IYF9](#)

## Application Details

---

Application Notes: Optimal working dilution should be determined by the investigator.

Restrictions: For Research Use only

## Handling

---

Format: Lyophilized

Reconstitution: 15 µL or 50 µL double distilled water (DDW), depending on the sample size.

Concentration: 1 mg/mL

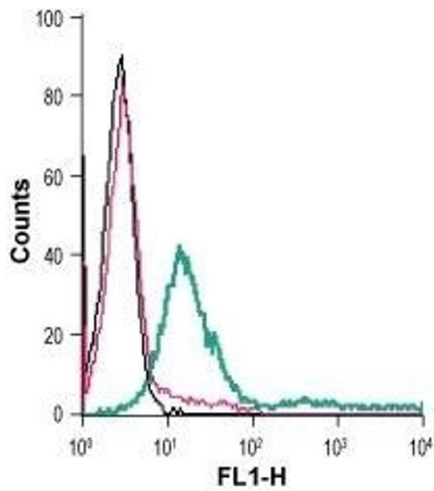
Buffer: Reconstituted antibody contains phosphate buffered saline (PBS), pH 7.4, 1 % BSA, 0.05 % Sodium azide.

Preservative: Sodium azide

Precaution of Use: This product contains Sodium azide: a POISONOUS AND HAZARDOUS SUBSTANCE which should be handled by trained staff only.

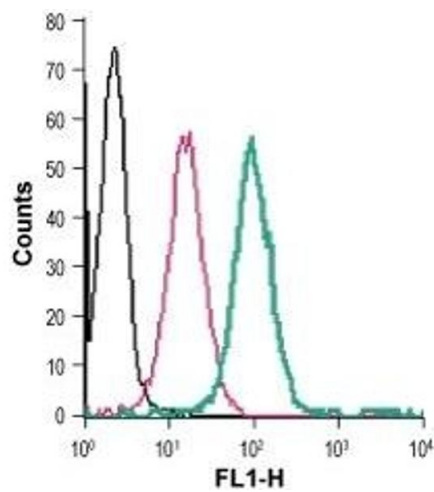
Storage: RT, 4 °C, -20 °C

Storage Comment: Storage before reconstitution: The antibody ships as a lyophilized powder at room temperature. Upon arrival, it should be stored at -20°C.  
Storage after reconstitution: The reconstituted solution can be stored at 4°C, protected from the light, for up to 1 week. For longer periods, small aliquots should be stored at -20°C. Avoid multiple freezing and thawing. Centrifuge all antibody preparations before use (10000 x g 5 min).



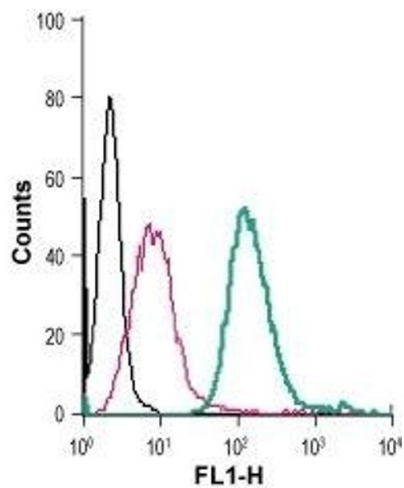
### Flow Cytometry

**Image 1.** Cell surface detection of GPR91 in live intact human Jurkat T-cell leukemia cells: (black line) Cells.(red line) Cells + Rabbit IgG isotype control-FITC.(green line) Cells + Anti-GPR91 (SUCNR1) (extracellular)-FITC Antibody (ABIN7043784, ABIN7045713, ABIN7045714, ABIN7045715 and ABIN7045716), (2.5 µg).



### Flow Cytometry

**Image 2.** Cell surface detection of GPR91 in live intact human THP-1 monocytic leukemia cells: (black line) Cells.(red line) Cells + Rabbit IgG isotype control-FITC.(green line) Cells + Anti-GPR91 (SUCNR1) (extracellular)-FITC Antibody (ABIN7043784, ABIN7045713, ABIN7045714, ABIN7045715 and ABIN7045716), (2.5 µg).



### Flow Cytometry

**Image 3.** Cell surface detection of GPR91 in live intact mouse J774 macrophage cells: (black line) Cells.(red line) Cells + Rabbit IgG isotype control-FITC.(green line) Cells + Anti-GPR91 (SUCNR1) (extracellular)-FITC Antibody (ABIN7043784, ABIN7045713, ABIN7045714, ABIN7045715 and ABIN7045716), (2.5 µg).