

Datasheet for ABIN7043787

## anti-SYN2 antibody (Domain G, Intracellular)



[Go to Product page](#)

### 2 Images

#### Overview

Quantity:	25 µL
Target:	SYN2
Binding Specificity:	AA 438-450, Domain G, Intracellular
Reactivity:	Mouse, Rat
Host:	Rabbit
Clonality:	Polyclonal
Conjugate:	This SYN2 antibody is un-conjugated
Application:	Western Blotting (WB), Immunohistochemistry (IHC), Immunofluorescence (IF)

#### Product Details

Immunogen:	Immunogen: Synthetic peptide Immunogen Sequence: (C)SGTLKEPDSSKTP, corresponding to amino acid residues 438-450 of rat Synapsin-2
Isotype:	IgG
Cross-Reactivity (Details):	This antibody will recognize both canonical isoforms (also known as Synapsin IIa) and the shorter isoform (Synapsin-IIb).
Characteristics:	Anti-Synapsin II (SYN2) Antibody (ABIN7043787, ABIN7044660 and ABIN7044661)) is a highly selective antibody directed against an epitope of the rat protein. The antibody can be used in western blot and immunohistochemistry applications. It has been designed to recognize Synapsin II from mouse, human, and rat samples. This antibody will recognize both canonical isoforms (also known as Synapsin IIa) and the shorter isoform (Synapsin IIb).

## Product Details

Purification: Affinity purified on immobilized antigen.

## Target Details

Target: SYN2

Abstract: [SYN2 Products](#)

Background: Alternative names: Synapsin II (SYN2), Synapsin-2

Gene ID: 29179

NCBI Accession: [NM\\_133625](#)

UniProt: [Q63537](#)

## Application Details

Application Notes: Optimal working dilution should be determined by the investigator.

Restrictions: For Research Use only

## Handling

Format: Lyophilized

Reconstitution: 25 µL, 50 µL or 0.2 mL double distilled water (DDW), depending on the sample size.

Concentration: 0.8 mg/mL

Buffer: Reconstituted antibody contains phosphate buffered saline (PBS), pH 7.4, 1 % BSA, 0.05 % Sodium azide.

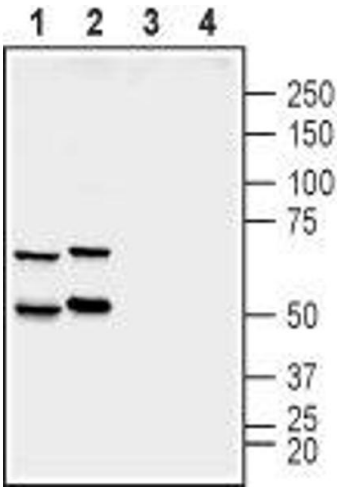
Preservative: Sodium azide

Precaution of Use: This product contains Sodium azide: a POISONOUS AND HAZARDOUS SUBSTANCE which should be handled by trained staff only.

Storage: RT, 4 °C, -20 °C

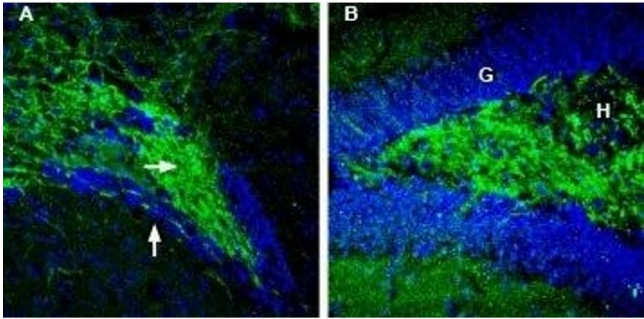
Storage Comment: Storage before reconstitution: The antibody ships as a lyophilized powder at room temperature. Upon arrival, it should be stored at -20°C.

Storage after reconstitution: The reconstituted solution can be stored at 4°C for up to 1 week. For longer periods, small aliquots should be stored at -20°C. Avoid multiple freezing and thawing. Centrifuge all antibody preparations before use (10000 x g 5 min).



### Western Blotting

**Image 1.** Western blot analysis of rat (lanes 1 and 3) and mouse (lanes 2 and 4) brain membranes: - 1,2. Anti-Synapsin II (SYN2) Antibody (ABIN7043787, ABIN7044660 and ABIN7044661), (1:200).3,4. Anti-Synapsin II (SYN2) Antibody, preincubated with Synapsin II/SYN2 Blocking Peptide (#BLP-NR015).



### Immunohistochemistry

**Image 2.** Expression of Synapsin-2 in mouse ventral striatum and rat hippocampus - Immunohistochemical staining of perfusion-fixed frozen mouse brain sections with Anti-Synapsin II (SYN2) Antibody (ABIN7043787, ABIN7044660 and ABIN7044661), (1:200), followed by goat-anti-rabbit-AlexaFluor-488 (green staining). A. Synapsin-2 staining in the mouse ventral striatum region shows dense patches of immunoreactivity within the islands of Calleja (IC) (horizontal arrow) that are delineated by DAPI-positive granule cells (in blue and marked by a vertical arrow). B. Synapsin-2 staining in the rat hippocampal dentate gyrus is detected in the dentate hilus (H) but not in the granule layer (G). Cell nuclei are stained with DAPI (blue).