

Datasheet for ABIN7043790

anti-Synaptophysin antibody (Intravesicular Loop)

3 Images



[Go to Product page](#)

Overview

Quantity:	0.2 mL
Target:	Synaptophysin (SYP)
Binding Specificity:	AA 178-190, Intravesicular Loop
Reactivity:	Human, Mouse, Rat
Host:	Guinea Pig
Clonality:	Polyclonal
Conjugate:	This Synaptophysin antibody is un-conjugated
Application:	Western Blotting (WB), Immunohistochemistry (IHC)

Product Details

Immunogen:	Immunogen: Synthetic peptide Immunogen Sequence: CRQTGNT(S)KELRD, corresponding to amino acid residues 178-190 of rat Synaptophysin
Isotype:	IgG
Characteristics:	A Guinea Pig Polyclonal Antibody to Synaptophysin.

Target Details

Target:	Synaptophysin (SYP)
Alternative Name:	Major synaptic vesicle protein p38, SYP (SYP Products)
Background:	Alternative names: Major synaptic vesicle protein p38, SYP

Target Details

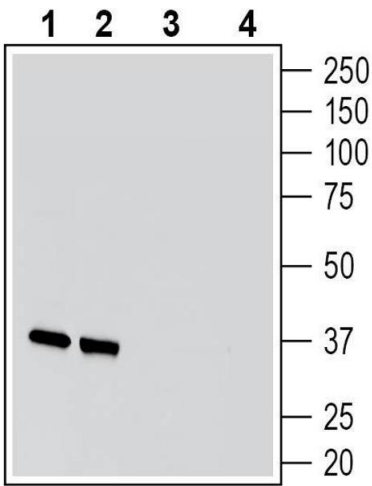
NCBI Accession:	NM_003179
UniProt:	P07825
Pathways:	Regulation of G-Protein Coupled Receptor Protein Signaling , Regulation of long-term Neuronal Synaptic Plasticity

Application Details

Application Notes:	Optimal working dilution should be determined by the investigator.
Restrictions:	For Research Use only

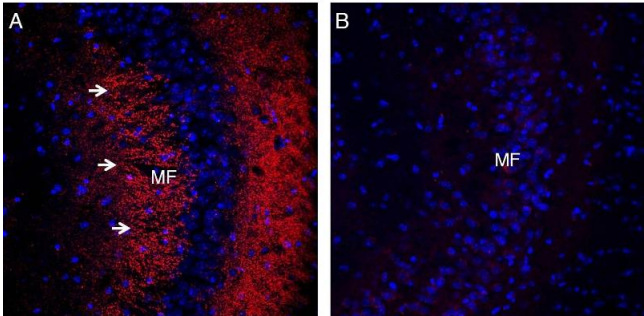
Handling

Format:	Lyophilized
Reconstitution:	25 µL, 50 µL or 0.2 mL double distilled water (DDW), depending on the sample size.
Concentration:	0.8 mg/mL
Buffer:	Reconstituted antibody contains phosphate buffered saline (PBS), pH 7.4, 1 % BSA, 0.05 % Sodium azide.
Preservative:	Sodium azide
Precaution of Use:	This product contains Sodium azide: a POISONOUS AND HAZARDOUS SUBSTANCE which should be handled by trained staff only.
Storage:	RT, 4 °C, -20 °C
Storage Comment:	<p>Storage before reconstitution: The antibody ships as a lyophilized powder at room temperature. Upon arrival, it should be stored at -20°C.</p> <p>Storage after reconstitution: The reconstituted solution can be stored at 4°C for up to 1 week. For longer periods, small aliquots should be stored at -20°C. Avoid multiple freezing and thawing. Centrifuge all antibody preparations before use (10000 x g 5 min).</p>



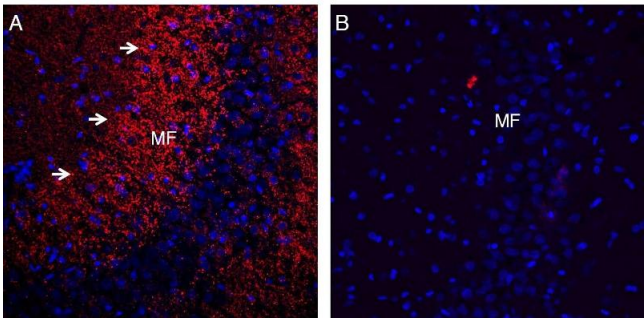
Western Blotting

Image 1. Western blot analysis of rat brain membranes (lanes 1 and 3) and mouse brain membranes (lanes 2 and 4): - 1-2. Guinea Pig Anti-Synaptophysin Antibody (ABIN7043790, ABIN7045442 and ABIN7045443), (1:200). 3-4. Guinea Pig Anti-Synaptophysin Antibody, preincubated with Synaptophysin Blocking Peptide (BLP-NR013).



Immunohistochemistry

Image 2. Expression of Synaptophysin in mouse hippocampus. - Immunohistochemical staining of perfusion-fixed frozen mouse brain sections with Guinea Pig Anti-Synaptophysin Antibody (ABIN7043790, ABIN7045442 and ABIN7045443), (1:200), followed by goat anti-guinea pig-AlexaFluor-594. A. Staining in the hippocampal CA3 region, showed immunoreactivity (red) in the mossy fiber terminal zone (MF, arrows). B. Pre-incubation of the antibody with Synaptophysin Blocking Peptide (BLP-NR013), suppressed staining. Cell nuclei are stained with DAPI (blue).



Immunohistochemistry

Image 3. Expression of Synaptophysin in rat hippocampus. - Immunohistochemical staining of perfusion-fixed frozen rat brain sections with Guinea Pig Anti-Synaptophysin Antibody (ABIN7043790, ABIN7045442 and ABIN7045443), (1:200), followed by goat anti-guinea pig-AlexaFluor-594. A. Staining in the hippocampal CA3 region, showed immunoreactivity (red) in the mossy fiber terminal zone (MF, arrows). B. Pre-incubation of the antibody with Synaptophysin Blocking Peptide (BLP-NR013), suppressed staining. Cell nuclei are stained with DAPI (blue).