

Datasheet for ABIN7043791

**anti-Synaptophysin antibody (Intravesicular Loop)**[Go to Product page](#)**3** Images

## Overview

Quantity:	50 µL
Target:	Synaptophysin (SYP)
Binding Specificity:	AA 178-190, Intravesicular Loop
Reactivity:	Mouse, Rat
Host:	Rabbit
Clonality:	Polyclonal
Conjugate:	This Synaptophysin antibody is un-conjugated
Application:	Western Blotting (WB), Immunohistochemistry (IHC), Immunofluorescence (IF)

## Product Details

Immunogen:	Immunogen: Synthetic peptide Immunogen Sequence: CRQTGNT(S)KELRD, corresponding to amino acid residues 178-190 of rat synaptophysin
Isotype:	IgG
Characteristics:	Anti-Synaptophysin Antibody (ABIN7043791, ABIN7044656 and ABIN7044657)) is a highly specific antibody directed against an epitope of the rat protein. It can be used in western blot and immunohistochemistry applications. It has been designed to recognize synaptophysin from mouse, rat, and human samples.
Purification:	Affinity purified on immobilized antigen.

## Target Details

---

Target:	Synaptophysin (SYP)
Alternative Name:	Synaptophysin ( <a href="#">SYP Products</a> )
Background:	Alternative names: Synaptophysin, Major synaptic vesicle protein p38, SYP
Gene ID:	24804
NCBI Accession:	<a href="#">NM_003179</a>
UniProt:	<a href="#">P07825</a>
Pathways:	<a href="#">Regulation of G-Protein Coupled Receptor Protein Signaling</a> , <a href="#">Regulation of long-term Neuronal Synaptic Plasticity</a>

## Application Details

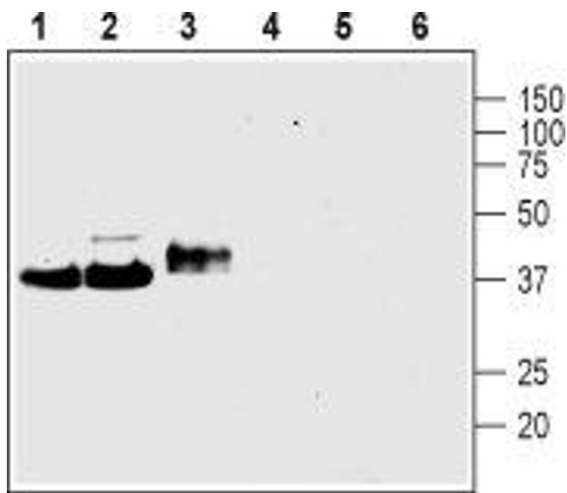
---

Application Notes:	Optimal working dilution should be determined by the investigator.
Restrictions:	For Research Use only

## Handling

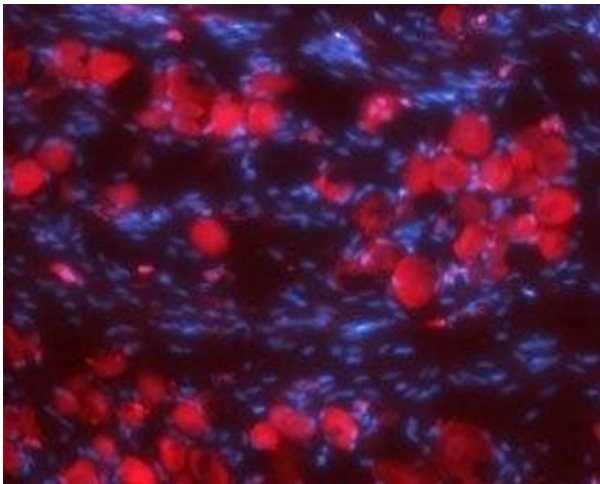
---

Format:	Lyophilized
Reconstitution:	25 $\mu$ L, 50 $\mu$ L or 0.2 mL double distilled water (DDW), depending on the sample size.
Concentration:	0.8 mg/mL
Buffer:	Reconstituted antibody contains phosphate buffered saline (PBS), pH 7.4, 1 % BSA, 0.05 % Sodium azide.
Preservative:	Sodium azide
Precaution of Use:	This product contains Sodium azide: a POISONOUS AND HAZARDOUS SUBSTANCE which should be handled by trained staff only.
Storage:	RT, 4 °C, -20 °C
Storage Comment:	Storage before reconstitution: The antibody ships as a lyophilized powder at room temperature. Upon arrival, it should be stored at -20°C. Storage after reconstitution: The reconstituted solution can be stored at 4°C for up to 1 week. For longer periods, small aliquots should be stored at -20°C. Avoid multiple freezing and thawing. Centrifuge all antibody preparations before use (10000 x g 5 min).



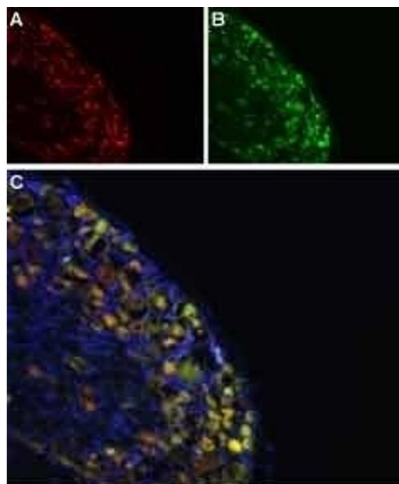
### Western Blotting

**Image 1.** Western blot analysis of rat brain membranes (lanes 1 and 4), mouse brain membranes (lanes 2 and 5) and rat PC12 pheochromocytoma cell line lysate (lanes 3 and 6): - 1-3. Anti-Synaptophysin Antibody (ABIN7043791, ABIN7044656 and ABIN7044657), (1:400).4-6. Anti-Synaptophysin Antibody, preincubated with Synaptophysin Blocking Peptide (#BLP-NR013).



### Immunohistochemistry

**Image 2.** Expression of Synaptophysin in rat DRG - Immunohistochemical staining of rat dorsal root ganglia (DRG) frozen sections using Anti-Synaptophysin Antibody (ABIN7043791, ABIN7044656 and ABIN7044657), (1:100). SYP (red) is expressed in DRG neurons. Hoechst 33342 (blue) shows nuclear staining and is used as the counterstain.



### Immunohistochemistry

**Image 3.** Colocalization of NaV1.8 and Synaptophysin in rat DRG - Immunohistochemical staining of rat DRG frozen section using Anti-NaV1.8 (SCN10A)-ATTO Fluor-594 Antibody (ABIN7043654) and Anti-Synaptophysin Antibody (ABIN7043791, ABIN7044656 and ABIN7044657). A. NaV1.8 staining (red). B. SYP staining (green). C. Merged image demonstrates a partial overlap in the distribution of NaV1.8 and SYP within the DRGs. DAPI is used as the counterstain (blue).