



[Go to Product page](#)

Datasheet for ABIN7043798

## anti-SNTB1 antibody (Intracellular, PH1 Domain)

### 2 Images

#### Overview

Quantity:	25 µL
Target:	SNTB1
Binding Specificity:	AA 99-113, Intracellular, PH1 Domain
Reactivity:	Mouse, Human, Rat
Host:	Rabbit
Clonality:	Polyclonal
Conjugate:	This SNTB1 antibody is un-conjugated
Application:	Western Blotting (WB)

#### Product Details

Immunogen:	Immunogen: Synthetic peptide Immunogen Sequence: (C)EQVPESISNQRGVK, corresponding to amino acid residues 99 -113 of mouse beta1-syntrophin
Isotype:	IgG
Characteristics:	Anti-β1-Syntrophin (SNTB1) Antibody (ABIN7043798, ABIN7045166 and ABIN7045167)) is a highly specific antibody directed against an epitope of the mouse protein. The antibody can be used in western blot analysis. It has been designed to recognize SNTB1 from human, mouse, and rat samples.
Purification:	Affinity purified on immobilized antigen.

## Target Details

---

Target:	SNTB1
Alternative Name:	beta1-Syntrophin (SNTB1) ( <a href="#">SNTB1 Products</a> )
Background:	Alternative names: beta1-Syntrophin (SNTB1), Syntrophin-2, SNT2B1, BSYN2, 59 kDa dystrophin-associated protein A1 basic component 1, DAPA1B, Tax interaction protein 43, TIP-43
Gene ID:	20649
NCBI Accession:	<a href="#">NM_021021</a>
UniProt:	<a href="#">Q99L88</a>

## Application Details

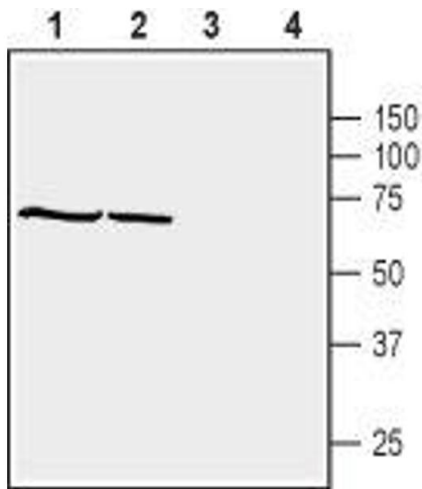
---

Application Notes:	Optimal working dilution should be determined by the investigator.
Restrictions:	For Research Use only

## Handling

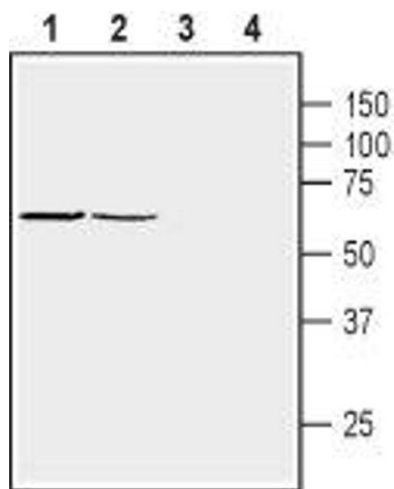
---

Format:	Lyophilized
Reconstitution:	25 µL, 50 µL or 0.2 mL double distilled water (DDW), depending on the sample size.
Concentration:	0.8 mg/mL
Buffer:	Reconstituted antibody contains phosphate buffered saline (PBS), pH 7.4, 1 % BSA, 0.05 % Sodium azide.
Preservative:	Sodium azide
Precaution of Use:	This product contains Sodium azide: a POISONOUS AND HAZARDOUS SUBSTANCE which should be handled by trained staff only.
Storage:	RT, 4 °C, -20 °C
Storage Comment:	Storage before reconstitution: The antibody ships as a lyophilized powder at room temperature. Upon arrival, it should be stored at -20°C. Storage after reconstitution: The reconstituted solution can be stored at 4°C for up to 1 week. For longer periods, small aliquots should be stored at -20°C. Avoid multiple freezing and thawing. Centrifuge all antibody preparations before use (10000 x g 5 min).



#### Western Blotting

**Image 1.** Western blot analysis of human HL-60 promyelocytic leukemia cell line lysate (lanes 1 and 3) and human HepG2 hepatocellular carcinoma cell line lysate (lanes 2 and 4): - 1,2. Anti- $\beta$ 1-Syntrophin (SNTB1) Antibody (ABIN7043798, ABIN7045166 and ABIN7045167), (1:500).3,4. Anti- $\beta$ 1-Syntrophin (SNTB1) Antibody, preincubated with  $\beta$ 1-Syntrophin/SNTB1 Blocking Peptide (#BLP-PZ022).



#### Western Blotting

**Image 2.** Western blot analysis of mouse (lanes 1 and 3) and rat (lanes 2 and 4) brain membranes: - 1,2. Anti- $\beta$ 1-Syntrophin (SNTB1) Antibody (ABIN7043798, ABIN7045166 and ABIN7045167), (1:500).3,4. Anti- $\beta$ 1-Syntrophin (SNTB1) Antibody, preincubated with  $\beta$ 1-Syntrophin/SNTB1 Blocking Peptide (#BLP-PZ022).