

Datasheet for ABIN7043807
anti-TAUT antibody (C-Term, Intracellular)[Go to Product page](#)

3 Images

Overview

Quantity:	25 µL
Target:	TAUT
Binding Specificity:	AA 581-594, C-Term, Intracellular
Reactivity:	Human, Rat, Mouse
Host:	Rabbit
Clonality:	Polyclonal
Conjugate:	This TAUT antibody is un-conjugated
Application:	Western Blotting (WB)

Product Details

Immunogen:	Immunogen: Synthetic peptide Immunogen Sequence: (C)TPREPNRWAVEREG, corresponding to amino acid residues 581-594 of rat TauT
Isotype:	IgG
Characteristics:	Anti-Taurine Transporter (SLC6A6) Antibody is directed against an epitope of rat TauT. Anti-Taurine Transporter (SLC6A6) Antibody (ABIN7043807, ABIN7044469 and ABIN7044470)) can be used in western blot analysis. It has been designed to recognize TauT from mouse, rat and human samples.
Purification:	Affinity purified on immobilized antigen.

Target Details

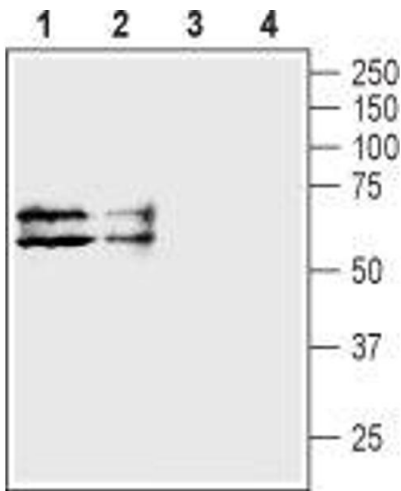
Target:	TAUT
Alternative Name:	Taurine Transporter (SLC6A6) (TAUT Products)
Background:	Alternative names: Taurine Transporter (SLC6A6), Sodium- and chloride-dependent taurine transporter, TauT
Gene ID:	29464
NCBI Accession:	NM_003043
UniProt:	P31643

Application Details

Application Notes:	Optimal working dilution should be determined by the investigator.
Restrictions:	For Research Use only

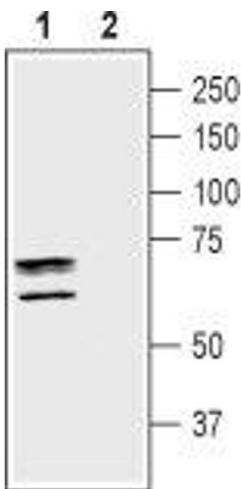
Handling

Format:	Lyophilized
Reconstitution:	25 µL, 50 µL or 0.2 mL double distilled water (DDW), depending on the sample size.
Concentration:	0.8 mg/mL
Buffer:	Reconstituted antibody contains phosphate buffered saline (PBS), pH 7.4, 1 % BSA, 0.05 % Sodium azide.
Preservative:	Sodium azide
Precaution of Use:	This product contains Sodium azide: a POISONOUS AND HAZARDOUS SUBSTANCE which should be handled by trained staff only.
Storage:	RT, 4 °C, -20 °C
Storage Comment:	<p>Storage before reconstitution: The antibody ships as a lyophilized powder at room temperature. Upon arrival, it should be stored at -20°C.</p> <p>Storage after reconstitution: The reconstituted solution can be stored at 4°C for up to 1 week. For longer periods, small aliquots should be stored at -20°C. Avoid multiple freezing and thawing. Centrifuge all antibody preparations before use (10000 x g 5 min).</p>



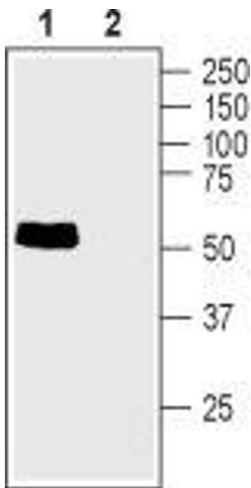
Western Blotting

Image 1. Western blot analysis of human HL-60 promyelocytic leukemia cell lysate (lanes 1 and 3) and human HT-29 colon adenocarcinoma cell lysate (lanes 2 and 4): - 1,2. Anti-Taurine Transporter (SLC6A6) Antibody (ABIN7043807, ABIN7044469 and ABIN7044470), (1:200).3,4. Anti-Taurine Transporter (SLC6A6) Antibody, preincubated with Taurine Transporter/SLC6A6 Blocking Peptide (#BLP-GT006).



Western Blotting

Image 2. Western blot analysis of mouse brain membranes: - 1. Anti-Taurine Transporter (SLC6A6) Antibody (ABIN7043807, ABIN7044469 and ABIN7044470), (1:200).2. Anti-Taurine Transporter (SLC6A6) Antibody, preincubated with Taurine Transporter/SLC6A6 Blocking Peptide (#BLP-GT006).



Western Blotting

Image 3. Western blot analysis of rat small intestine lysate: - 1. Anti-Taurine Transporter (SLC6A6) Antibody (ABIN7043807, ABIN7044469 and ABIN7044470), (1:200).2. Anti-Taurine Transporter (SLC6A6) Antibody, preincubated with Taurine Transporter/SLC6A6 Blocking Peptide (#BLP-GT006).