



Datasheet for ABIN7043810

## anti-TSH receptor antibody (Extracellular, N-Term)



[Go to Product page](#)

### 3 Images

#### Overview

Quantity:	25 µL
Target:	TSH receptor (TSHR)
Binding Specificity:	AA 376-390, Extracellular, N-Term
Reactivity:	Human, Mouse, Rat
Host:	Rabbit
Clonality:	Polyclonal
Conjugate:	This TSH receptor antibody is un-conjugated
Application:	Western Blotting (WB)

#### Product Details

Immunogen:	<p>Immunogen: Synthetic peptide</p> <p>Immunogen Sequence: ETLQAFDSHYDYTVK, corresponding to amino acid residues 376-390 of rat TSHR</p>
Isotype:	IgG
Characteristics:	<p>Anti-TSH Receptor (TSHR) (extracellular) Antibody (ABIN7043810, ABIN7045322 and ABIN7045323)) is a highly specific antibody directed against an epitope of the rat protein. The antibody can be used in western blot analysis. The antibody recognizes an extracellular epitope and thus is ideal for detecting the receptor in living cells. It has been designed to recognize TSHR from human, rat, and mouse samples.</p>
Purification:	Affinity purified on immobilized antigen.

## Target Details

---

Target:	TSH receptor (TSHR)
Alternative Name:	TSH Receptor (TSHR) ( <a href="#">TSHR Products</a> )
Background:	Alternative names: TSH Receptor (TSHR), Thyrotropin receptor, Thyroid-stimulating hormone receptor, TSH-R
Gene ID:	25360
NCBI Accession:	<a href="#">NM_000369</a>
UniProt:	<a href="#">P21463</a>
Pathways:	<a href="#">Thyroid Hormone Synthesis</a>

## Application Details

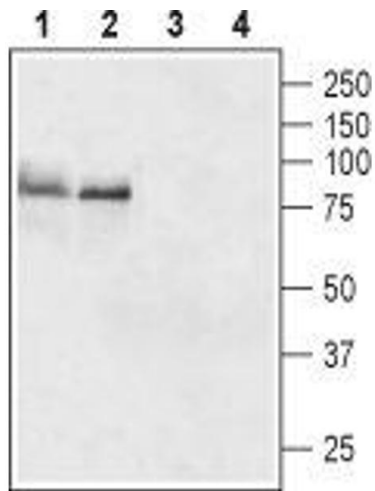
---

Application Notes:	Optimal working dilution should be determined by the investigator.
Restrictions:	For Research Use only

## Handling

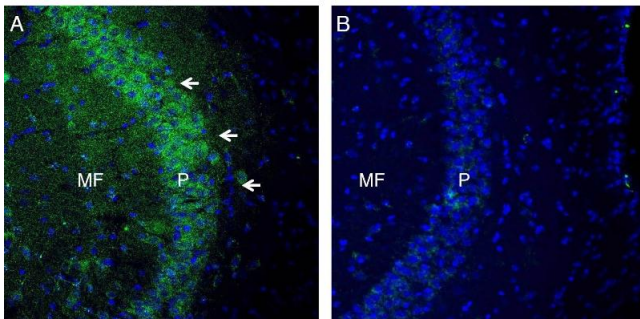
---

Format:	Lyophilized
Reconstitution:	25 $\mu$ L, 50 $\mu$ L or 0.2 mL double distilled water (DDW), depending on the sample size.
Concentration:	0.85 mg/mL
Buffer:	Reconstituted antibody contains phosphate buffered saline (PBS), pH 7.4, 1 % BSA, 0.05 % Sodium azide.
Preservative:	Sodium azide
Precaution of Use:	This product contains Sodium azide: a POISONOUS AND HAZARDOUS SUBSTANCE which should be handled by trained staff only.
Storage:	RT, 4 °C, -20 °C
Storage Comment:	Storage before reconstitution: The antibody ships as a lyophilized powder at room temperature. Upon arrival, it should be stored at -20°C. Storage after reconstitution: The reconstituted solution can be stored at 4°C for up to 1 week. For longer periods, small aliquots should be stored at -20°C. Avoid multiple freezing and thawing. Centrifuge all antibody preparations before use (10000 x g 5 min).



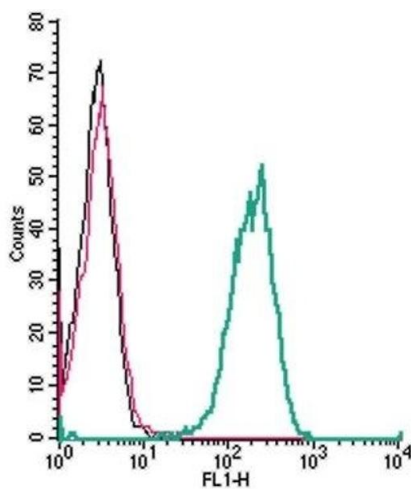
### Western Blotting

**Image 1.** Western blot analysis of rat (lanes 1 and 3) and mouse (lanes 2 and 4) brain lysates: - 1,2. Anti-TSH Receptor (TSHR) (extracellular) Antibody (ABIN7043810, ABIN7045322 and ABIN7045323), (1:200).3,4. Anti-TSH Receptor (TSHR) (extracellular) Antibody, preincubated with TSH Receptor/TSHR (extracellular) Blocking Peptide (#BLP-TR006).



### Immunohistochemistry

**Image 2.** Expression of TSH Receptor in mouse hippocampus. - Immunohistochemical staining of perfusion-fixed frozen mouse brain sections with Anti-TSH Receptor (TSHR) (extracellular) Antibody (ABIN7043810, ABIN7045322 and ABIN7045323), (1:200), followed by goat anti-rabbit-AlexaFluor-488. A. Staining in the hippocampal CA3 region, showed immunoreactivity (green) in the pyramidal layer (P, arrows) and in mossy fiber terminal region (MF). B. Pre-incubation of the antibody with TSH Receptor (TSHR) (extracellular) Blocking Peptide (BLP-TR006), suppressed staining. Cell nuclei are stained with DAPI (blue).



### Flow Cytometry

**Image 3.** Cell surface detection of TSH Receptor by indirect flow cytometry in live intact human THP-1 monocytic leukemia cells: (black line) Cells.(red line) Cells + goat-anti-rabbit-FITC.(green line) Cells + Anti-TSH Receptor (TSHR) (extracellular) Antibody (ABIN7043810, ABIN7045322 and ABIN7045323), (2.5 µg) + goat-anti-rabbit-FITC.