



[Go to Product page](#)

Datasheet for ABIN7043814

anti-TRPA1 antibody (1st Extracellular Loop) (FITC)

3 Images

Overview

Quantity:	15 µL
Target:	TRPA1
Binding Specificity:	1st Extracellular Loop, AA 747-760
Reactivity:	Human, Mouse, Rat
Host:	Rabbit
Clonality:	Polyclonal
Conjugate:	This TRPA1 antibody is conjugated to FITC
Application:	Flow Cytometry (FACS)

Product Details

Immunogen:	Immunogen: Synthetic peptide Immunogen Sequence: (C)NSTGIINETSDHSE, corresponding to amino acid residues 747-760 of human TRPA1
Isotype:	IgG
Characteristics:	A Rabbit Polyclonal Antibody to TRPA1 (extracellular) conjugated to the fluorescent dye FITC

Target Details

Target:	TRPA1
Alternative Name:	TRPA1 (TRPA1 Products)
Background:	Alternative names: Transient receptor potential cation channel subfamily A member 1, ANKTM1, Ankyrin-like with transmembrane domains protein 1, Transformation-sensitive protein

Target Details

p120, Wasabi Receptor

Gene ID: 8989

NCBI Accession: [NM_007332](#)

UniProt: [075762](#)

Application Details

Application Notes: Optimal working dilution should be determined by the investigator.

Restrictions: For Research Use only

Handling

Format: Lyophilized

Reconstitution: 15 μ L or 50 μ L double distilled water (DDW), depending on the sample size.

Concentration: 1 mg/mL

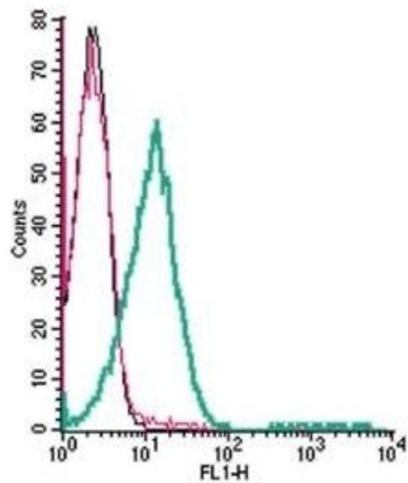
Buffer: Reconstituted antibody contains phosphate buffered saline (PBS), pH 7.4, 1 % BSA, 0.05 % Sodium azide.

Preservative: Sodium azide

Precaution of Use: This product contains Sodium azide: a POISONOUS AND HAZARDOUS SUBSTANCE which should be handled by trained staff only.

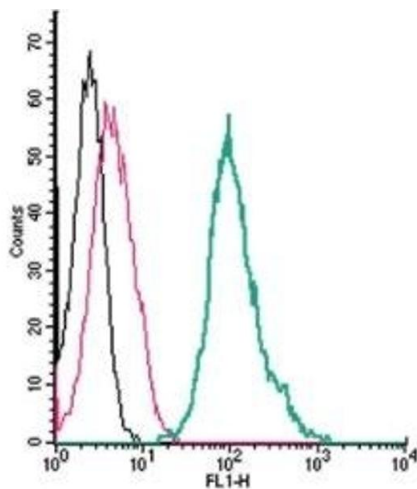
Storage: RT, 4 °C, -20 °C

Storage Comment: Storage before reconstitution: The antibody ships as a lyophilized powder at room temperature. Upon arrival, it should be stored at -20°C.
Storage after reconstitution: The reconstituted solution can be stored at 4°C, protected from the light, for up to 1 week. For longer periods, small aliquots should be stored at -20°C. Avoid multiple freezing and thawing. Centrifuge all antibody preparations before use (10000 x g 5 min).



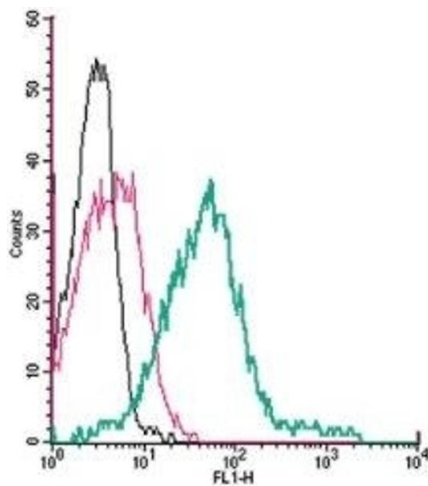
Flow Cytometry

Image 1. Cell surface detection of TRPA1 by direct flow cytometry in live intact human Jurkat T-cell leukemia cells: (black line) Cells.(red line) Cells + Rabbit IgG isotype control-FITC.(green line) Cells + Anti-TRPA1 (extracellular)-FITC Antibody (ABIN7043814, ABIN7045476, ABIN7045477, ABIN7045478 and ABIN7045479), (5 µg).



Flow Cytometry

Image 2. Cell surface detection of TRPA1 by direct flow cytometry in live intact mouse J774 macrophage cells: (black line) Cells.(red line) Cells + Rabbit IgG isotype control-FITC.(green line) Cells + Anti-TRPA1 (extracellular)-FITC Antibody (ABIN7043814, ABIN7045476, ABIN7045477, ABIN7045478 and ABIN7045479), (2.5 µg).



Flow Cytometry

Image 3. Cell surface detection of TRPA1 by direct flow cytometry in live intact human MEG-01 megakaryoblastic leukemia cells: (black line) Cells.(red line) Cells + Rabbit IgG isotype control-FITC.(green line) Cells + Anti-TRPA1 (extracellular)-FITC Antibody (ABIN7043814, ABIN7045476, ABIN7045477, ABIN7045478 and ABIN7045479), (5 µg).