

Datasheet for ABIN7043816

anti-TRPC1 antibody (2nd Extracellular Loop)**3** Images[Go to Product page](#)

Overview

Quantity:	25 µL
Target:	TRPC1
Binding Specificity:	2nd Extracellular Loop, AA 495-505
Reactivity:	Human, Mouse, Rat
Host:	Rabbit
Clonality:	Polyclonal
Conjugate:	This TRPC1 antibody is un-conjugated
Application:	Western Blotting (WB), Immunofluorescence (IF), Immunocytochemistry (ICC), Live Cell Imaging (LCI)

Product Details

Immunogen:	Immunogen: Synthetic peptide Immunogen Sequence: (C)SMGQMLQDFGK, corresponding to amino acid residues 495-505 of rat TRPC1
Isotype:	IgG
Characteristics:	Anti-TRPC1 (extracellular) Antibody (ABIN7043816, ABIN7044065 and ABIN7044066)) is a highly specific antibody directed against an epitope of the rat protein. The antibody can be used in western blot, live cell imaging, and immunocytochemistry applications. It has been designed to recognize TRPC1 from mouse, rat, and human samples.
Purification:	Affinity purified on immobilized antigen.

Target Details

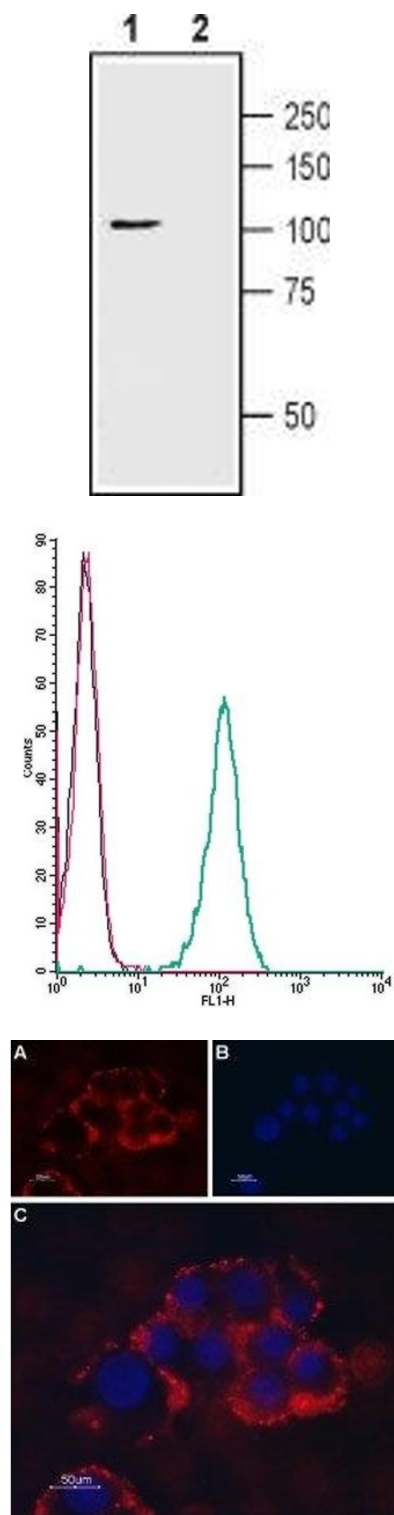
Target:	TRPC1
Alternative Name:	TRPC1 (TRPC1 Products)
Background:	Alternative names: TRPC1, Short transient receptor potential channel 1, Transient receptor protein 1, TRP1
Gene ID:	89821
NCBI Accession:	NM_003304
UniProt:	Q9QX01

Application Details

Application Notes:	Optimal working dilution should be determined by the investigator.
Restrictions:	For Research Use only

Handling

Format:	Lyophilized
Reconstitution:	25 µL, 50 µL or 0.2 mL double distilled water (DDW), depending on the sample size.
Concentration:	0.85 mg/mL
Buffer:	Reconstituted antibody contains phosphate buffered saline (PBS), pH 7.4, 1 % BSA, 0.05 % Sodium azide.
Preservative:	Sodium azide
Precaution of Use:	This product contains Sodium azide: a POISONOUS AND HAZARDOUS SUBSTANCE which should be handled by trained staff only.
Storage:	RT, 4 °C, -20 °C
Storage Comment:	<p>Storage before reconstitution: The antibody ships as a lyophilized powder at room temperature. Upon arrival, it should be stored at -20°C.</p> <p>Storage after reconstitution: The reconstituted solution can be stored at 4°C for up to 1 week. For longer periods, small aliquots should be stored at -20°C. Avoid multiple freezing and thawing. Centrifuge all antibody preparations before use (10000 x g 5 min).</p>



Western Blotting

Image 1. Western blot analysis of rat brain lysate: - 1. Anti-TRPC1 (extracellular) Antibody (ABIN7043816, ABIN7044065 and ABIN7044066), (1:200). 2. Anti-TRPC1 (extracellular) Antibody, preincubated with TRPC1 (extracellular) Blocking Peptide (#BLP-CC118).

Flow Cytometry

Image 2. Cell surface detection of TRPC1 by indirect flow cytometry in live intact human THP-1 monocytic leukemia cells: (black line) Cells. (red line) Cells + goat-anti-rabbit-FITC. (green line) Cells + Anti-TRPC1 (extracellular) Antibody (ABIN7043816, ABIN7044065 and ABIN7044066), (2.5 µg) + goat-anti-rabbit-FITC.

Immunocytochemistry

Image 3. Expression of TRPC1 in PC12 cells - Cell surface detection of TRPC1 in intact living PC12 cells. A. Extracellular staining of cells with Anti-TRPC1 (extracellular) Antibody (ABIN7043816, ABIN7044065 and ABIN7044066), (1:50) followed by goat anti-rabbit-AlexaFluor-594 secondary antibody. B. Nuclear staining with DAPI as the counterstain. C. Merged images of A and B.