

Datasheet for ABIN7043821  
**anti-TRPC4 antibody (C-Term, Intracellular)**[Go to Product page](#)

## 4 Images

## Overview

Quantity:	25 µL
Target:	TRPC4
Binding Specificity:	AA 943-958, C-Term, Intracellular
Reactivity:	Human, Mouse, Rat
Host:	Rabbit
Clonality:	Polyclonal
Conjugate:	This TRPC4 antibody is un-conjugated
Application:	Western Blotting (WB), Immunohistochemistry (IHC), Immunocytochemistry (ICC), Immunofluorescence (IF), Immunoprecipitation (IP)

## Product Details

Immunogen:	Immunogen: Synthetic peptide Immunogen Sequence: (C)KEKHAHEEDSSIDYDL, corresponding to amino acid residues 943-958 of mouse TRPC4
Isotype:	IgG
Characteristics:	Anti-TRPC4 Antibody (ABIN7043821, ABIN7043970 and ABIN7043971)) is a highly specific antibody directed against an epitope of the mouse protein. The antibody can be used in western blot, immunoprecipitation, immunohistochemistry, and immunocytochemistry applications. It has been designed to recognize TRPC4 from human, mouse, and rat samples.
Purification:	Affinity purified on immobilized antigen.

## Target Details

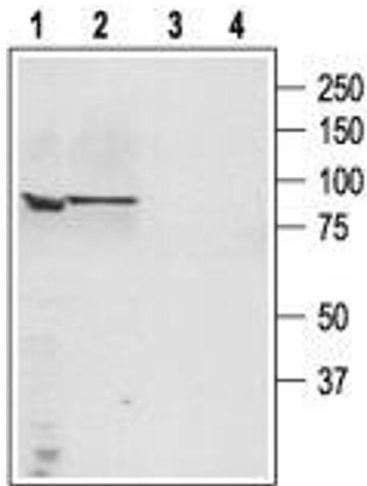
Target:	TRPC4
Alternative Name:	TRPC4 ( <a href="#">TRPC4 Products</a> )
Background:	Alternative names: TRPC4, Transient receptor potential channel 4, TRP4, hTrp4, Capacitative calcium entry channel Trp4, CCE1
Gene ID:	22066
NCBI Accession:	<a href="#">NM_003306</a>
UniProt:	<a href="#">Q9QUQ5</a>

## Application Details

Application Notes:	Optimal working dilution should be determined by the investigator.
Restrictions:	For Research Use only

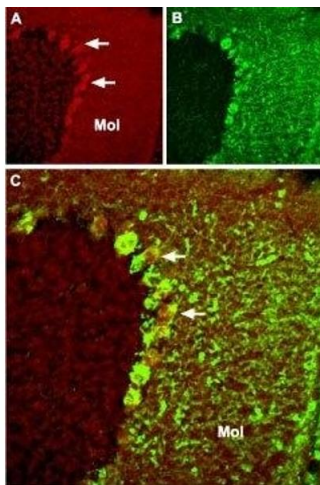
## Handling

Format:	Lyophilized
Reconstitution:	25 µL, 50 µL or 0.2 mL double distilled water (DDW), depending on the sample size.
Concentration:	0.4 mg/mL
Buffer:	Reconstituted antibody contains phosphate buffered saline (PBS), pH 7.4, 1 % BSA, 0.05 % Sodium azide.
Preservative:	Sodium azide
Precaution of Use:	This product contains Sodium azide: a POISONOUS AND HAZARDOUS SUBSTANCE which should be handled by trained staff only.
Storage:	RT, 4 °C, -20 °C
Storage Comment:	<p>Storage before reconstitution: The antibody ships as a lyophilized powder at room temperature. Upon arrival, it should be stored at -20°C.</p> <p>Storage after reconstitution: The reconstituted solution can be stored at 4°C for up to 1 week. For longer periods, small aliquots should be stored at -20°C. Avoid multiple freezing and thawing. Centrifuge all antibody preparations before use (10000 x g 5 min).</p>



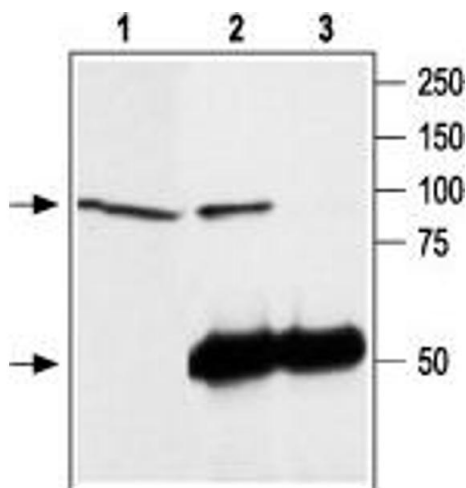
### Western Blotting

**Image 1.** Western blot analysis of human PC3 Caucasian prostate adenocarcinoma (lanes 1 and 3) and human LNCaP prostate carcinoma (lanes 2 and 4) cell lysates: - 1,3. Anti-TRPC4 Antibody (ABIN7043821, ABIN7043970 and ABIN7043971), (1:200).2,4. Anti-TRPC4 Antibody, preincubated with TRPC4 Blocking Peptide (#BLP-CC018).



### Immunohistochemistry

**Image 2.** Expression of TRPC4 in mouse cerebellum - Immunohistochemical staining of mouse cerebellum frozen sections with Anti-TRPC4 Antibody (ABIN7043821, ABIN7043970 and ABIN7043971). A. TRPC4 (red) appears in Purkinje cells (arrows) and in the molecular (Mol) layer. B. Staining with mouse anti-parvalbumin (PV) in the same brain section. C. Confocal merge of TRPC4 and PV demonstrates partial co-localization in the Purkinje and the molecular layers.



### Immunoprecipitation

**Image 3.** Immunoprecipitation of rat brain lysate: - 1. Rat brain lysate.2. Lysate immunoprecipitated with Anti-TRPC4 Antibody (ABIN7043821, ABIN7043970 and ABIN7043971), (6 µg).3. Lysate immunoprecipitated with pre-immune rabbit serum.The upper arrow indicates the TRPC4 channel while the lower arrow indicates the IgG heavy chain.Western blot analysis was performed with Anti-TRPC4 Antibody.

Please check the [product details page](#) for more images. Overall 4 images are available for ABIN7043821.