

Datasheet for ABIN7043825
anti-TRPC6 antibody (2nd Extracellular Loop)

3 Images

[Go to Product page](#)

Overview

Quantity:	25 µL
Target:	TRPC6
Binding Specificity:	2nd Extracellular Loop, AA 573-586
Reactivity:	Human, Mouse, Rat
Host:	Rabbit
Clonality:	Polyclonal
Conjugate:	This TRPC6 antibody is un-conjugated
Application:	Western Blotting (WB), Immunohistochemistry (IHC), Immunofluorescence (IF), Immunocytochemistry (ICC), Live Cell Imaging (LCI)

Product Details

Immunogen:	Immunogen: Synthetic peptide Immunogen Sequence: (C)DNVKYYNLARIKWD, corresponding to amino acid residues 573-586 of rat TRPC6
Isotype:	IgG
Characteristics:	Anti-TRPC6 (extracellular) Antibody (ABIN7043825, ABIN7044069 and ABIN7044070)) is a highly specific antibody directed against an epitope of the rat protein. The antibody can be used in western blot, immunohistochemistry, live cell imaging, and immunocytochemistry applications. It has been designed to recognize TRPC6 from mouse, rat, and human samples.
Purification:	Affinity purified on immobilized antigen.

Target Details

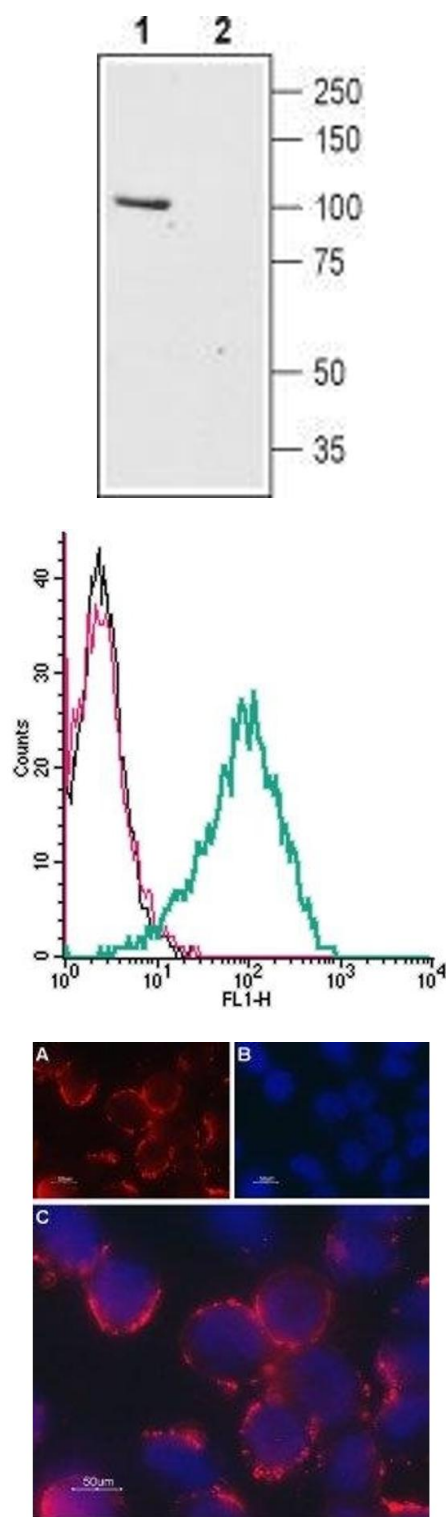
Target:	TRPC6
Alternative Name:	TRPC6 (TRPC6 Products)
Background:	Alternative names: TRPC6, Short transient receptor potential channel 6, Transient receptor protein 6, TRP6
Gene ID:	22068
NCBI Accession:	NM_004621
UniProt:	Q61143

Application Details

Application Notes:	Optimal working dilution should be determined by the investigator.
Restrictions:	For Research Use only

Handling

Format:	Lyophilized
Reconstitution:	25 µL, 50 µL or 0.2 mL double distilled water (DDW), depending on the sample size.
Concentration:	0.85 mg/mL
Buffer:	Reconstituted antibody contains phosphate buffered saline (PBS), pH 7.4, 1 % BSA, 0.05 % Sodium azide.
Preservative:	Sodium azide
Precaution of Use:	This product contains Sodium azide: a POISONOUS AND HAZARDOUS SUBSTANCE which should be handled by trained staff only.
Storage:	RT, 4 °C, -20 °C
Storage Comment:	<p>Storage before reconstitution: The antibody ships as a lyophilized powder at room temperature. Upon arrival, it should be stored at -20°C.</p> <p>Storage after reconstitution: The reconstituted solution can be stored at 4°C for up to 1 week. For longer periods, small aliquots should be stored at -20°C. Avoid multiple freezing and thawing. Centrifuge all antibody preparations before use (10000 x g 5 min).</p>



Western Blotting

Image 1. Western blot analysis of rat brain lysates: - 1. Anti-TRPC6 (extracellular) Antibody (ABIN7043825, ABIN7044069 and ABIN7044070), (1:200).2. Anti-TRPC6 (extracellular) Antibody, preincubated with TRPC6 (extracellular) Blocking Peptide (#BLP-CC120).

Flow Cytometry

Image 2. Cell surface detection of TRPC6 by indirect flow cytometry in live intact human MEG-01 megakaryocytic leukemia cells: (black line) Cells.(red line) Cells + goat-anti-rabbit-FITC.(green line) Cells + Anti-TRPC6 (extracellular) Antibody (ABIN7043825, ABIN7044069 and ABIN7044070), (2.5 μg) + goat-anti-rabbit-FITC.

Immunocytochemistry

Image 3. Expression of TRPC6 in rat PC12 cells - Cell surface detection of TRPC6 in intact living PC12 cells. A. Extracellular staining of cells with Anti-TRPC6 (extracellular) Antibody (ABIN7043825, ABIN7044069 and ABIN7044070), (1:50), followed by goat anti-rabbit-AlexaFluor-594 secondary antibody (red). B. Nuclear staining with DAPI as the counterstain. C. Merged image of A and B.