



Datasheet for ABIN7043831

anti-TRPM2 antibody (3rd Extracellular Loop)



[Go to Product page](#)

4 Images

Overview

Quantity:	0.2 mL
Target:	TRPM2
Binding Specificity:	3rd Extracellular Loop, AA 999-1012
Reactivity:	Human, Mouse, Rat
Host:	Rabbit
Clonality:	Polyclonal
Conjugate:	This TRPM2 antibody is un-conjugated
Application:	Western Blotting (WB), Immunohistochemistry (IHC), Flow Cytometry (FACS)

Product Details

Immunogen:	Immunogen: Synthetic peptide Immunogen Sequence: (C)NGTDPYKPK(S)PESD, corresponding to amino acid residues 999 - 1012 of human TRPM2
Isotype:	IgG
Characteristics:	Anti-TRPM2 (extracellular) Antibody (ABIN7043831, ABIN7044075 and ABIN7044076)) is a highly specific antibody directed against an epitope of the human protein. The antibody can be used in western blot, immunohistochemistry, and live cell flow cytometry applications. It has been designed to recognize TRPM2 from mouse, rat, and human samples.
Purification:	Affinity purified on immobilized antigen.

Target Details

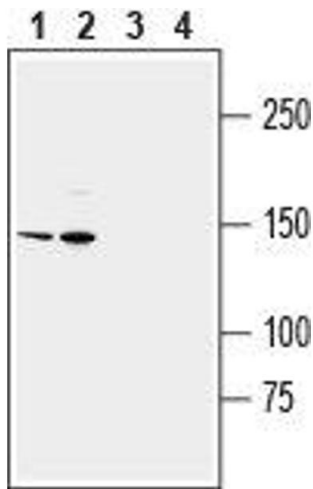
Target:	TRPM2
Alternative Name:	TRPM2 (TRPM2 Products)
Background:	Alternative names: Transient receptor potential cation channel subfamily M member 2, Transient receptor potential melastatin 2, LTrpC2, TrpC7
Gene ID:	7226
NCBI Accession:	NM_003307
UniProt:	O94759

Application Details

Application Notes:	Optimal working dilution should be determined by the investigator.
Restrictions:	For Research Use only

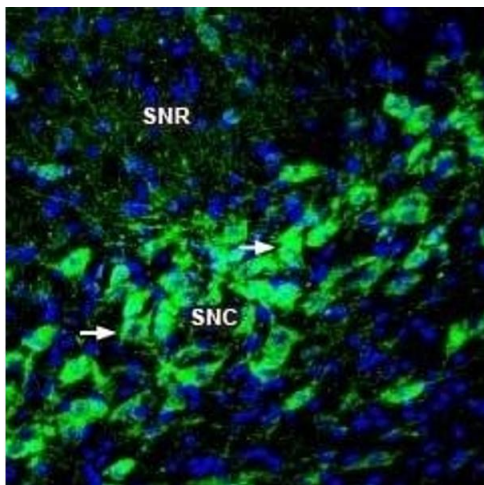
Handling

Format:	Lyophilized
Reconstitution:	25 µL, 50 µL or 0.2 mL double distilled water (DDW), depending on the sample size.
Concentration:	0.8 mg/mL
Buffer:	Reconstituted antibody contains phosphate buffered saline (PBS), pH 7.4, 1 % BSA, 0.05 % Sodium azide.
Preservative:	Sodium azide
Precaution of Use:	This product contains Sodium azide: a POISONOUS AND HAZARDOUS SUBSTANCE which should be handled by trained staff only.
Storage:	RT, 4 °C, -20 °C
Storage Comment:	Storage before reconstitution: The antibody ships as a lyophilized powder at room temperature. Upon arrival, it should be stored at -20°C. Storage after reconstitution: The reconstituted solution can be stored at 4°C for up to 1 week. For longer periods, small aliquots should be stored at -20°C. Avoid multiple freezing and thawing. Centrifuge all antibody preparations before use (10000 x g 5 min).



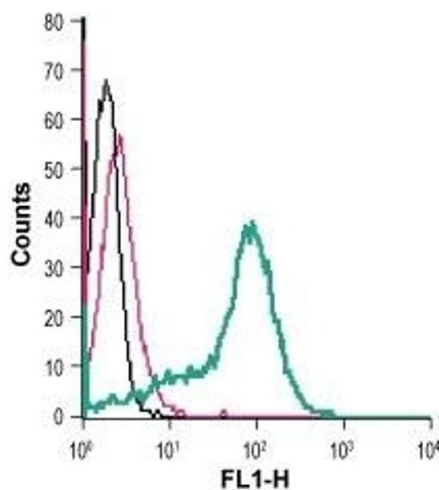
Western Blotting

Image 1. Western blot analysis of human THP-1 monocytic leukemia cell line lysate (lanes 1 and 3) and human HL-60 promyelocytic leukemia cell line lysate (lanes 2 and 4): - 1, 2. Anti-TRPM2 (extracellular) Antibody (ABIN7043831, ABIN7044075 and ABIN7044076), (1:200). 3, 4. Anti-TRPM2 (extracellular) Antibody, preincubated with TRPM2 (extracellular) Blocking Peptide (#BLP-CC128).



Immunohistochemistry

Image 2. Expression of TRPM2 in rat substantia nigra - Immunohistochemical staining of perfusion-fixed frozen rat brain sections with Anti-TRPM2 (extracellular) Antibody (ABIN7043831, ABIN7044075 and ABIN7044076), followed by goat anti-rabbit-AlexaFluor-488. TRPM2 immunoreactivity (green) appears in neurons in the substantia nigra pars compacta (SNC), (arrows). SNR=substantia nigra pars reticulata. Cell nuclei are stained with DAPI (blue).



Flow Cytometry

Image 3. Cell surface detection of TRPM2 in live intact human THP-1 monocytic leukemia cells: (black line) Cells.(red line) Cells + goat-anti-rabbit-FITC.(green line) Cells + Anti-TRPM2 (extracellular) Antibody (ABIN7043831, ABIN7044075 and ABIN7044076), (2.5 µg) + goat-anti-rabbit-FITC.

Please check the [product details page](#) for more images. Overall 4 images are available for ABIN7043831.