

Datasheet for ABIN7043835
anti-TRPM6 antibody (1st Extracellular Loop)

3 Images

[Go to Product page](#)

Overview

Quantity:	25 µL
Target:	TRPM6
Binding Specificity:	1st Extracellular Loop, AA 802-815
Reactivity:	Mouse, Rat
Host:	Rabbit
Clonality:	Polyclonal
Application:	Immunohistochemistry (IHC), Western Blotting (WB)

Product Details

Immunogen:	Immunogen: Synthetic peptide Immunogen Sequence: CVKDYDLERGPDEK, corresponding to amino acid residues 802-815 of mouse TRPM6
Isotype:	IgG
Characteristics:	Anti-TRPM6 (extracellular) Antibody (ABIN7043835, ABIN7044012 and ABIN7044013)) is a highly specific antibody directed against an epitope of the mouse protein. The antibody can be used in western blot and immunohistochemistry applications. It has been designed to recognize TRPM6 from mouse, rat, and human samples.
Purification:	Affinity purified on immobilized antigen.

Target Details

Target:	TRPM6
---------	-------

Target Details

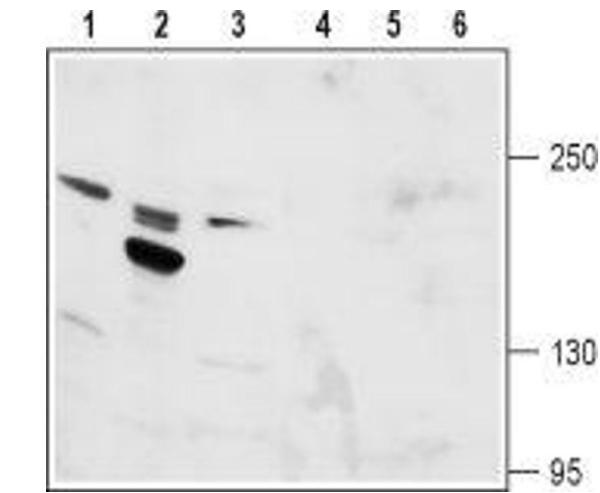
Alternative Name:	TRPM6 (TRPM6 Products)
Background:	Alternative names: TRPM6, Transient receptor potential cation channel subfamily M member 6, Channel kinase 2, CHAK2, Melastatin-related TRP cation channel 6
Gene ID:	225997
NCBI Accession:	NM_017662
UniProt:	Q8CIR4

Application Details

Application Notes:	Optimal working dilution should be determined by the investigator.
Restrictions:	For Research Use only

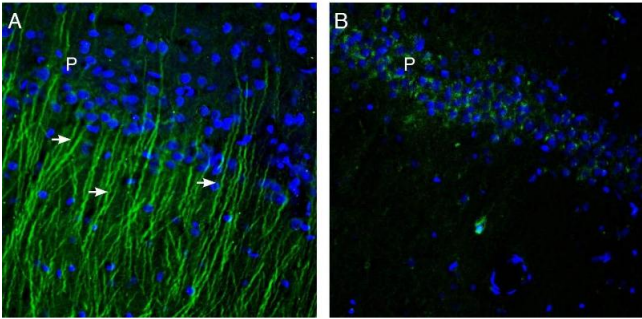
Handling

Format:	Lyophilized
Reconstitution:	25 µL, 50 µL or 0.2 mL double distilled water (DDW), depending on the sample size.
Concentration:	0.9 mg/mL
Buffer:	Reconstituted antibody contains phosphate buffered saline (PBS), pH 7.4, 1 % BSA, 0.05 % Sodium azide.
Preservative:	Sodium azide
Precaution of Use:	This product contains Sodium azide: a POISONOUS AND HAZARDOUS SUBSTANCE which should be handled by trained staff only.
Storage:	RT, 4 °C, -20 °C
Storage Comment:	<p>Storage before reconstitution: The antibody ships as a lyophilized powder at room temperature. Upon arrival, it should be stored at -20°C.</p> <p>Storage after reconstitution: The reconstituted solution can be stored at 4°C for up to 1 week. For longer periods, small aliquots should be stored at -20°C. Avoid multiple freezing and thawing. Centrifuge all antibody preparations before use (10000 x g 5 min).</p>



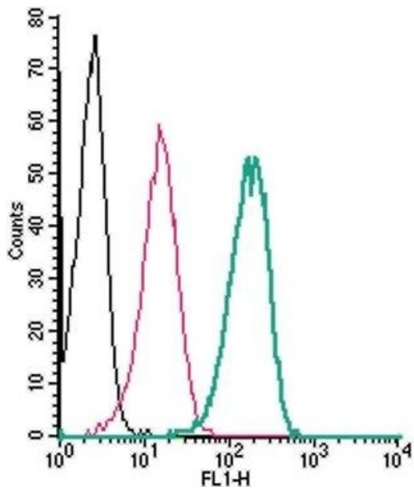
Western Blotting

Image 1. Western blot analysis of rat kidney (lanes 1 and 4), rat testis (lanes 2 and 5) and mouse kidney (lanes 3 and 6) lysates: - 1-3. Anti-TRPM6 (extracellular) Antibody (ABIN7043835, ABIN7044012 and ABIN7044013), (1:200). 4-6. Anti-TRPM6 (extracellular) Antibody, preincubated with TRPM6 (extracellular) Blocking Peptide (#BLP-CC046).



Immunohistochemistry

Image 2. Expression of TRPM6 in rat hippocampus. Immunohistochemical staining of perfusion-fixed frozen rat brain sections with Anti-TRPM6 (extracellular) Antibody (ABIN7043835, ABIN7044012 and ABIN7044013), (1:200), followed by goat anti-rabbit-AlexaFluor-488. A. Staining in the rat hippocampal CA1 region showed TRPM6 immunoreactivity (green) in the pyramidal cell layer (P) and apical dendrites (arrows). B. Pre-incubation of the antibody with TRPM6 (extracellular) Blocking Peptide (BLP-CC046) suppressed staining. Cell nuclei are stained with DAPI (blue).



Flow Cytometry

Image 3. Cell surface detection of TRPM6 by indirect flow cytometry in intact human THP-1 monocytic leukemia cells: (black line) Cells. (red line) Cells + goat-anti-rabbit-FITC. (green line) Cells + Anti-TRPM6 (extracellular) Antibody (ABIN7043835, ABIN7044012 and ABIN7044013), (2.5 µg) + goat-anti-rabbit-FITC.