

Datasheet for ABIN7043840

anti-TRPV1 antibody (C-Term, Intracellular)



[Go to Product page](#)

2 Images

Overview

Quantity:	25 µL
Target:	TRPV1
Binding Specificity:	AA 824-838, C-Term, Intracellular
Reactivity:	Rat
Host:	Guinea Pig
Clonality:	Polyclonal
Conjugate:	This TRPV1 antibody is un-conjugated
Application:	Western Blotting (WB), Immunohistochemistry (IHC), Immunofluorescence (IF)

Product Details

Immunogen:	<p>Immunogen: Synthetic peptide</p> <p>Immunogen Sequence: (C)EDAEVFKDS MVPGEK, corresponding to amino acid residues 824-838 of rat TRPV1</p>
Isotype:	IgG
Characteristics:	<p>Guinea pig Anti-TRPV1 (VR1) Antibody is directed against an epitope of rat TRPV1 channel.</p> <p>Guinea pig Anti-TRPV1 (VR1) Antibody (#), raised in guinea pigs, can be used in western blot analysis. It has been designed to recognize TRPV1 from mouse, rat, and human samples. The antigen used to immunize guinea pigs is the same as Anti-TRPV1 (VR1) Antibody (ABIN7043841, ABIN7043988 and ABIN7043989)) raised in rabbit. Our line of guinea pig antibodies enables more flexibility with our products such as multiplex staining studies, immunoprecipitation, etc.</p>

Product Details

Purification: Affinity purified on immobilized antigen.

Target Details

Target:	TRPV1
Alternative Name:	TRPV1 (VR1) (TRPV1 Products)
Background:	Alternative names: TRPV1 (VR1), Transient receptor potential cation channel subfamily V member 1, Capsaicin receptor, Vanilloid receptor 1, OTRPC1
Gene ID:	83810
NCBI Accession:	NM_018727
UniProt:	O35433
Pathways:	Dicarboxylic Acid Transport

Application Details

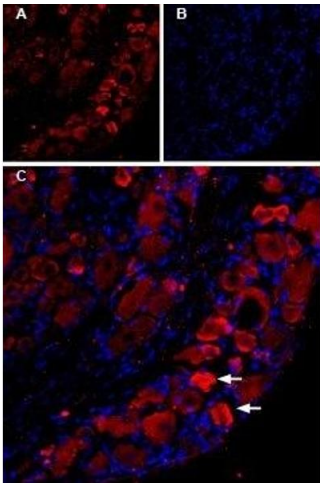
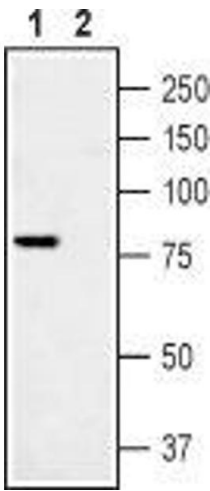
Application Notes:	Optimal working dilution should be determined by the investigator.
Restrictions:	For Research Use only

Handling

Format:	Lyophilized
Reconstitution:	25 µL, 50 µL or 0.2 mL double distilled water (DDW), depending on the sample size.
Concentration:	0.85 mg/mL
Buffer:	Reconstituted antibody contains phosphate buffered saline (PBS), pH 7.4, 1 % BSA, 0.05 % Sodium azide.
Preservative:	Sodium azide
Precaution of Use:	This product contains Sodium azide: a POISONOUS AND HAZARDOUS SUBSTANCE which should be handled by trained staff only.
Storage:	RT, 4 °C, -20 °C
Storage Comment:	<p>Storage before reconstitution: The antibody ships as a lyophilized powder at room temperature. Upon arrival, it should be stored at -20°C.</p> <p>Storage after reconstitution: The reconstituted solution can be stored at 4°C for up to 1 week. For longer periods, small aliquots should be stored at -20°C. Avoid multiple freezing and</p>

thawing. Centrifuge all antibody preparations before use (10000 x g 5 min).

Images



Western Blotting

Image 1. Western blot analysis of Rat DRG lysate: - 1. Guinea pig Anti-TRPV1 (VR1) Antibody (ABIN7043840, ABIN7045432 and ABIN7045433), (1:200). 2. Guinea pig Anti-TRPV1 (VR1) Antibody preincubated with TRPV1/VR1 Blocking Peptide (#BLP-CC030). Following a broad screen of secondary antibodies, the following were used for these applications: Western blot analysis: #106-035-006 (Jackson ImmunoResearch).

Immunohistochemistry

Image 2. Expression of TRPV1 in rat DRGs - Immunohistochemical staining of TRPV1 in rat dorsal root ganglion (DRG) using Guinea pig Anti-TRPV1 (VR1) Antibody (ABIN7043840, ABIN7045432 and ABIN7045433), (1:200). A. TRPV1 staining (red) appears in some DRG cells (arrows). B. DAPI counterstain (blue) is used to stain nuclei. C. Merged image of panels A and B.