

Datasheet for ABIN7043842

anti-TRPV2 antibody (C-Term, Intracellular)[Go to Product page](#)**3** Images

Overview

Quantity:	50 µL
Target:	TRPV2
Binding Specificity:	AA 735-750, C-Term, Intracellular
Reactivity:	Mouse, Rat
Host:	Rabbit
Clonality:	Polyclonal
Conjugate:	This TRPV2 antibody is un-conjugated
Application:	Western Blotting (WB), Immunohistochemistry (IHC), Immunofluorescence (IF), Immunoprecipitation (IP)

Product Details

Immunogen:	Immunogen: Synthetic peptide Immunogen Sequence: (C)KKNPTSKPGKNSASEE, corresponding to amino acid residues 735-750 of rat TRPV2
Isotype:	IgG
Cross-Reactivity (Details):	The antibody will not to recognize TRPV2 from human samples.
Characteristics:	Anti-TRPV2 (VRL1) Antibody (ABIN7043842, ABIN7043990 and ABIN7043991)) is a highly specific antibody directed against an epitope of the rat protein. The antibody can be used in western blot, immunoprecipitation, and immunohistochemistry applications. It has been designed to recognize TRPV2 from mouse and rat samples.
Purification:	Affinity purified on immobilized antigen.

Target Details

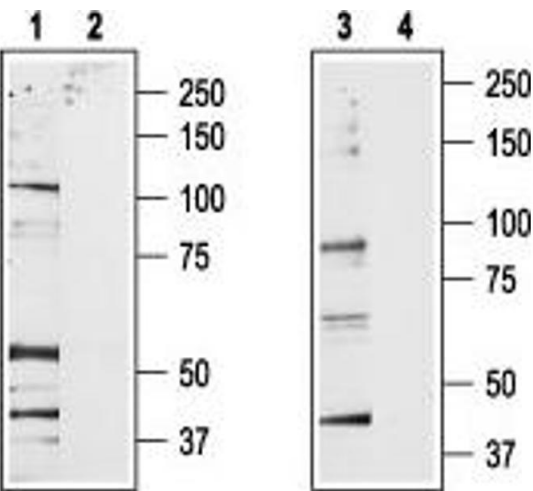
Target:	TRPV2
Alternative Name:	TRPV2 (VRL1) (TRPV2 Products)
Background:	Alternative names: TRPV2 (VRL1), Transient receptor potential cation channel subfamily V member 2, Vanilloid receptor-like protein 1, VRL-1, Osm-9-like TRP channel 2, OTRPC2, Stretch-activated channel 2B, SAC2B
Gene ID:	29465
NCBI Accession:	NM_016113
UniProt:	Q9WUD2
Pathways:	Regulation of Cell Size

Application Details

Application Notes:	Optimal working dilution should be determined by the investigator.
Restrictions:	For Research Use only

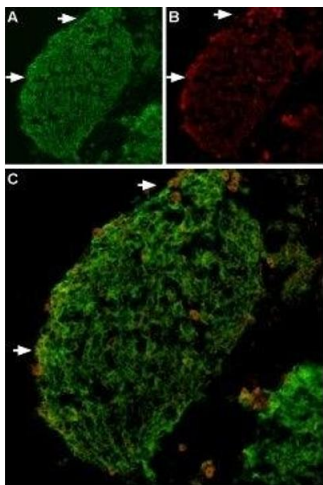
Handling

Format:	Lyophilized
Reconstitution:	25 µL, 50 µL or 0.2 mL double distilled water (DDW), depending on the sample size.
Concentration:	0.65 mg/mL
Buffer:	Reconstituted antibody contains phosphate buffered saline (PBS), pH 7.4, 1 % BSA, 0.05 % Sodium azide.
Preservative:	Sodium azide
Precaution of Use:	This product contains Sodium azide: a POISONOUS AND HAZARDOUS SUBSTANCE which should be handled by trained staff only.
Storage:	RT, 4 °C, -20 °C
Storage Comment:	<p>Storage before reconstitution: The antibody ships as a lyophilized powder at room temperature. Upon arrival, it should be stored at -20°C.</p> <p>Storage after reconstitution: The reconstituted solution can be stored at 4°C for up to 1 week. For longer periods, small aliquots should be stored at -20°C. Avoid multiple freezing and thawing. Centrifuge all antibody preparations before use (10000 x g 5 min).</p>



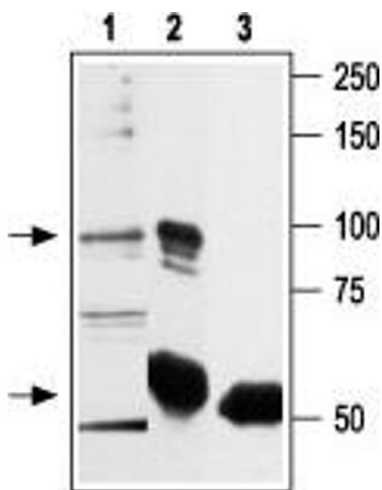
Western Blotting

Image 1. Western blot analysis of rat brain membrane (lanes 1 and 2) and RBL lysates (lanes 3 and 4): - 1,3. Anti-TRPV2 (VRL1) Antibody (ABIN7043842, ABIN7043990 and ABIN7043991), (1:200).2,4. Anti-TRPV2 (VRL1) Antibody, preincubated with TRPV2/VRL1 Blocking Peptide (#BLP-CC032).



Immunohistochemistry

Image 2. Expression of TRPV2 in mouse DRG - Immunohistochemical staining of TRPV2 in mouse dorsal root ganglion (DRG) using Anti-TRPV2 (VRL1) Antibody (ABIN7043842, ABIN7043990 and ABIN7043991). A. TRPV2 (green) appears in patches along the perimeter of the DRG (arrows). B. Neurons containing neurofilament 200 (red) are scattered in the DRG, also in patches (arrows). C. A merge of the two panels shows that the spatial distribution of neurofilament 200 and TRPV2 expression overlaps. However, DRGs showing robust expression of neurofilament 200 do not contain TRPV2.



Immunoprecipitation

Image 3. Immunoprecipitation of rat basophilic leukemia (RBL) lysate: - 1. RBL lysate.2. Lysate immunoprecipitated with Anti-TRPV2 (VRL1) Antibody (ABIN7043842, ABIN7043990 and ABIN7043991), (7.5 µg).3. Lysate immunoprecipitated with pre-immune rabbit serum. The upper arrow indicates TRPV2 while the lower arrow indicates the IgG heavy chain. Western blot analysis was performed with Anti-TRPV2 (VRL1) Antibody.