

Datasheet for ABIN7043854
anti-TRPV4 antibody (Extracellular) (FITC)



[Go to Product page](#)

2 Images

Overview

| | |
|----------------------|--|
| Quantity: | 50 µL |
| Target: | TRPV4 |
| Binding Specificity: | AA 647-662, Extracellular |
| Reactivity: | Rat |
| Host: | Rabbit |
| Clonality: | Polyclonal |
| Conjugate: | This TRPV4 antibody is conjugated to FITC |
| Application: | Flow Cytometry (FACS), Live Cell Imaging (LCI) |

Product Details

| | |
|-----------------------|---|
| Purpose: | A Rabbit Polyclonal Antibody to TRPV4 Conjugated to the Fluorescent Dye FITC |
| Immunogen: | Immunogen: Synthetic peptide Immunogen Sequence: (C)EDQSN(S)TVPSYPA(S)RD, corresponding to amino acid residues 647-662 of rat TRPV4 |
| Isotype: | IgG |
| Specificity: | 3rd extracellular loop |
| Cross-Reactivity: | Human, Mouse, Rat |
| Predicted Reactivity: | Rat - 14,16 amino acid residues identical, human - 12, mouse - 13 |
| Characteristics: | Anti-TRPV4 (extracellular) Antibody (ABIN7043852, ABIN7044071 and ABIN7044072) is a highly specific antibody directed against an epitope of the rat protein. The antibody can be used |

Product Details

in western blot, immunohistochemistry, live cell imaging, and immunocytochemistry applications. It has been designed to recognize TRPV4 from human, rat, and mouse samples. \nAnti-TRPV4 (extracellular)-FITC Antibody (ABIN7043852, ABIN7044071 and ABIN7044072)-F) is directly conjugated to fluorescein isothiocyanate (FITC). The antibody can be used in immunofluorescent applications such as direct live cell flow cytometry.

Purification: Affinity purified on immobilized antigen.

Target Details

| | |
|-------------------|--|
| Target: | TRPV4 |
| Alternative Name: | TRPV4 (TRPV4 Products) |
| Background: | <p>OTRPC4, VRL-2, VR-OAC, TRP12, Osm-9-Like TRP Channel 4,TRP channels are a large family (about 28 genes) of plasma membrane, non-selective cationic channels that are either specifically or ubiquitously expressed in excitable and non-excitable cells¹. According to IUPHAR the TRP family comprises of three main subfamilies on the basis of sequence homology, TRPC, TRPM and TRPV (to date, three extra subfamilies are considered to belong to the TRP family, the TRPA, TRPML, and TRPP)¹⁻⁴. The TRPV subfamily consists of six members, TRPV1-65. TRPV4 (also named OTRPC4) is activated under hypotonic conditions and serves as an osmoreceptor. TRPV4 is expressed in brain, liver, kidney, heart, testis and salivary gland⁶.</p> <p>Alternative names: TRPV4, OTRPC4, VRL-2, VR-OAC, TRP12</p> |
| Gene ID: | 66026 |
| NCBI Accession: | NM_021625 |
| UniProt: | Q9ERZ8 |
| Pathways: | Hormone Transport, Cell-Cell Junction Organization |

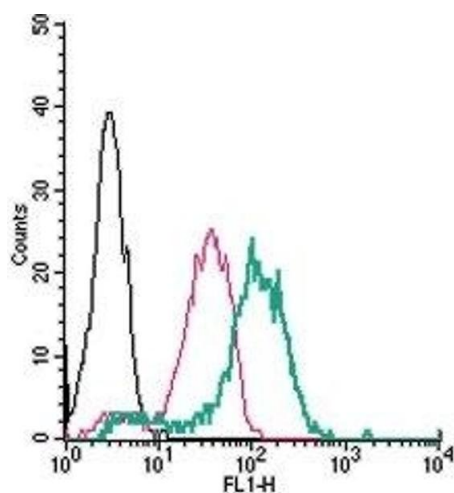
Application Details

| | |
|--------------------|---|
| Application Notes: | Antigen preadsorption control: 1 µg peptide per 1 µg antibody Application Dilutions Immunohistochemistry paraffin embedded sections ihc: N/A Application Dilutions Western blot wb: N/A |
| Comment: | Negative Control: (ABIN7582044) Blocking Peptide: (ABIN7237497) |

Application Details

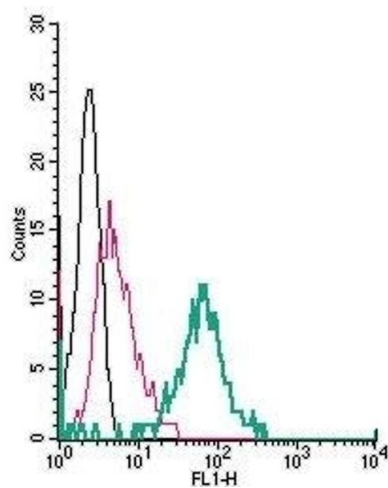
| | |
|--------------------|---|
| Restrictions: | For Research Use only |
| Handling | |
| Format: | Lyophilized |
| Reconstitution: | 15 µL or 50 µL double distilled water (DDW), depending on the sample size. |
| Concentration: | 1 mg/mL |
| Buffer: | PBS pH 7.4, 1 % BSA with 0.05 % sodium azide |
| Preservative: | Sodium azide |
| Precaution of Use: | This product contains Sodium azide: a POISONOUS AND HAZARDOUS SUBSTANCE which should be handled by trained staff only. |
| Storage: | 4 °C,-20 °C |
| Storage Comment: | <p>Storage before reconstitution: The antibody ships as a lyophilized powder at room temperature. Upon arrival, it should be stored at -20°C.</p> <p>Storage after reconstitution: The reconstituted solution can be stored at 4°C, protected from the light, for up to 1 week. For longer periods, small aliquots should be stored at -20°C. Avoid multiple freezing and thawing. Centrifuge all antibody preparations before use (10000 x g 5 min).</p> |

Images



Flow Cytometry

Image 1. Cell surface detection of TRPV4 in live intact human THP-1 monocytic leukemia cells: (black line) Cells.(red line) Cells + Rabbit IgG isotype control-FITC.(green line) Cells + Anti-TRPV4 (extracellular)-FITC Antibody (ABIN7043854, ABIN7045489, ABIN7045490, ABIN7045491 and ABIN7045492), (2.5 µg).



Flow Cytometry

Image 2. Cell surface detection of TRPV4 in live intact mouse J774 macrophage cells: (black line) Cells.(red line) Cells + Rabbit IgG isotype control-FITC.(green line) Cells + Anti-TRPV4 (extracellular)-FITC Antibody (ABIN7043854, ABIN7045489, ABIN7045490, ABIN7045491 and ABIN7045492), (2.5 μ g).