

Datasheet for ABIN7043856
anti-TRPV6 antibody (1st Extracellular Loop)[Go to Product page](#)

2 Images

Overview

Quantity:	25 µL
Target:	TRPV6
Binding Specificity:	1st Extracellular Loop, AA 395-405
Reactivity:	Human
Host:	Rabbit
Clonality:	Polyclonal
Application:	Western Blotting (WB), Immunofluorescence (IF), Immunocytochemistry (ICC), Live Cell Imaging (LCI)

Product Details

Immunogen:	Immunogen: Synthetic peptide Immunogen Sequence: (C)RTNNRTSPRDN, corresponding to amino acid residues 395-405 of human TRPV6
Isotype:	IgG
Cross-Reactivity (Details):	Not recommended for use in mouse and rat samples. Slight possibility, if any, for some cross reactivity with human TRPV5.
Characteristics:	Anti-Human TRPV6 (extracellular) Antibody is directed against an epitope of the human TRPV6 channel. Anti-Human TRPV6 (extracellular) Antibody (ABIN7043856, ABIN7043984 and ABIN7043985)) can be used in western blot and live cell imaging applications. It has been designed to recognize TRPV6 from human samples. The antibody is unlikely to recognize the channel from rat and mouse samples. In addition, there is a slight possibility, if any, for some cross-reactivity with human TRPV5.

Product Details

Purification: Affinity purified on immobilized antigen.

Target Details

Target: TRPV6

Alternative Name: TRPV6 ([TRPV6 Products](#))

Background: Alternative names: TRPV6, Epithelial calcium channel 2, ECaC2, Calcium transport protein 1, CaT1, CaT-like, CaT-L, Transient receptor potential cation channel subfamily V member 6

Gene ID: 55503

NCBI Accession: [NM_014274](#)

UniProt: [Q9H1D0](#)

Pathways: [TCR Signaling](#)

Application Details

Application Notes: Optimal working dilution should be determined by the investigator.

Restrictions: For Research Use only

Handling

Format: Lyophilized

Reconstitution: 25 µL, 50 µL or 0.2 mL double distilled water (DDW), depending on the sample size.

Concentration: 0.85 mg/mL

Buffer: Reconstituted antibody contains phosphate buffered saline (PBS), pH 7.4, 1 % BSA, 0.05 % Sodium azide.

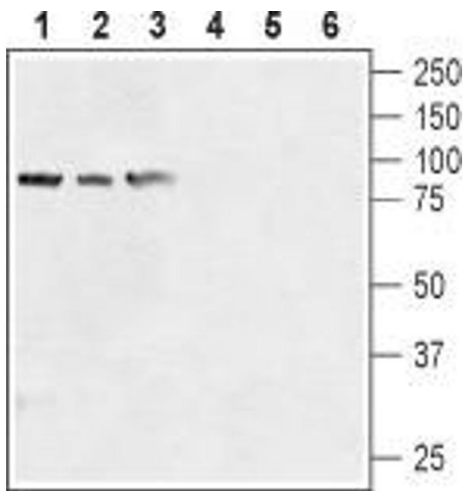
Preservative: Sodium azide

Precaution of Use: This product contains Sodium azide: a POISONOUS AND HAZARDOUS SUBSTANCE which should be handled by trained staff only.

Storage: RT, 4 °C, -20 °C

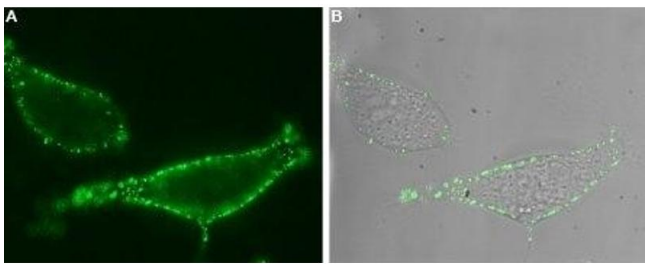
Storage Comment: Storage before reconstitution: The antibody ships as a lyophilized powder at room temperature. Upon arrival, it should be stored at -20°C.
Storage after reconstitution: The reconstituted solution can be stored at 4°C for up to 1 week. For longer periods, small aliquots should be stored at -20°C. Avoid multiple freezing and

thawing. Centrifuge all antibody preparations before use (10000 x g 5 min).



Western Blotting

Image 1. Western blot analysis of human prostate carcinoma cell lines (LNCaP (lanes 1 and 4), DU145 (lanes 2 and 5), PC-3 (lanes 3 and 6) lysates: - 1-3. Anti-Human TRPV6 (extracellular) Antibody (ABIN7043856, ABIN7043984 and ABIN7043985), (1:200). 4-6. Anti-Human TRPV6 (extracellular) Antibody, preincubated with Human TRPV6 (extracellular) Blocking Peptide (#BLP-CC028).



Immunocytochemistry

Image 2. Expression of TRPV6 in human LNCaP cells - Cell surface detection of TRPV6 in intact living human prostate carcinoma (LNCaP) cells. A. Extracellular staining of cells using Anti-Human TRPV6 (extracellular) Antibody (ABIN7043856, ABIN7043984 and ABIN7043985), (1:50), followed by goat anti-rabbit-AlexaFluor-488 secondary antibody (green). B. Merge images of A with live view of the cells.