



Datasheet for ABIN7043857
anti-TRPV6 antibody (C-Term, Intracellular)



[Go to Product page](#)

3 Images

Overview

Quantity:	25 µL
Target:	TRPV6
Binding Specificity:	AA 712-725, C-Term, Intracellular
Reactivity:	Human, Mouse, Rat
Host:	Rabbit
Clonality:	Polyclonal
Conjugate:	This TRPV6 antibody is un-conjugated
Application:	Western Blotting (WB), Immunohistochemistry (IHC), Immunofluorescence (IF), Immunoprecipitation (IP), Immunocytochemistry (ICC)

Product Details

Immunogen:	Immunogen: Synthetic peptide Immunogen Sequence: (C)NRGLEDGESWEYQI, corresponding to amino acid residues 712-725 of human TRPV6
Isotype:	IgG
Characteristics:	Anti-TRPV6 Antibody is directed against an intracellular epitope of the human TRPV6. Anti-TRPV6 Antibody (ABIN7043857, ABIN7043998 and ABIN7043999) can be used in western blot, immunoprecipitation, immunocytochemistry and immunohistochemistry applications. It has been designed to recognize TRPV6 from human, rat, and mouse samples.
Purification:	Affinity purified on immobilized antigen.

Target Details

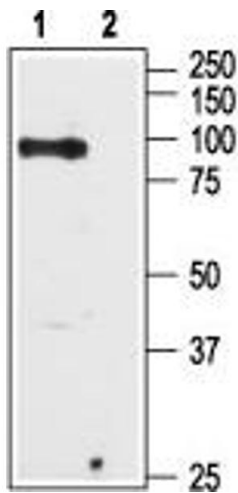
Target:	TRPV6
Alternative Name:	TRPV6 (TRPV6 Products)
Background:	Alternative names: TRPV6, Epithelial calcium channel 2, ECaC2, Calcium transport protein 1, CaT1, CaT-like, CaT-L, Transient receptor potential cation channel subfamily V member 6
Gene ID:	55503
NCBI Accession:	NM_014274
UniProt:	Q9H1D0
Pathways:	TCR Signaling

Application Details

Application Notes:	Optimal working dilution should be determined by the investigator.
Restrictions:	For Research Use only

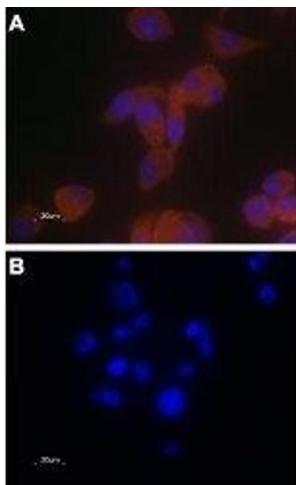
Handling

Format:	Lyophilized
Reconstitution:	25 µL, 50 µL or 0.2 mL double distilled water (DDW), depending on the sample size.
Concentration:	0.75 mg/mL
Buffer:	Reconstituted antibody contains phosphate buffered saline (PBS), pH 7.4, 1 % BSA, 0.05 % Sodium azide.
Preservative:	Sodium azide
Precaution of Use:	This product contains Sodium azide: a POISONOUS AND HAZARDOUS SUBSTANCE which should be handled by trained staff only.
Storage:	RT, 4 °C, -20 °C
Storage Comment:	Storage before reconstitution: The antibody ships as a lyophilized powder at room temperature. Upon arrival, it should be stored at -20°C. Storage after reconstitution: The reconstituted solution can be stored at 4°C for up to 1 week. For longer periods, small aliquots should be stored at -20°C. Avoid multiple freezing and thawing. Centrifuge all antibody preparations before use (10000 x g 5 min).



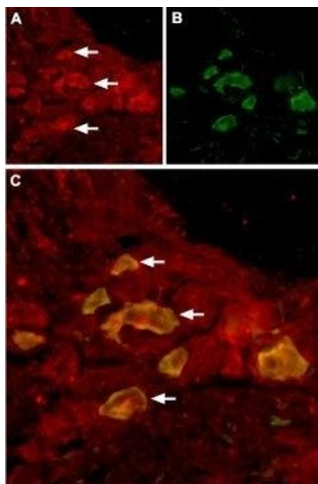
Western Blotting

Image 1. Western blot analysis of Human PC-3 prostate cancer cell lysate: - 1. Anti-TRPV6 Antibody (ABIN7043857, ABIN7043998 and ABIN7043999), (1:200). 2. Anti-TRPV6 Antibody, preincubated with TRPV6 Blocking Peptide (#BLP-CC036).



Immunocytochemistry

Image 2. Expression of TRPV6 in PC-3 cells - Immunocytochemical staining of paraformaldehyde-fixed PC-3 cells with Anti-TRPV6 Antibody (ABIN7043857, ABIN7043998 and ABIN7043999), (1:100) followed by goat anti-rabbit-AlexaFluor-555 secondary antibody (A) or with a mixture of Anti-TRPV6 Antibody and TRPV6 peptide antigen (1:20) (B). Hoechst 33342 is used as the counterstain (blue).



Immunohistochemistry

Image 3. Expression of TRPV6 in rat DRG - Immunohistochemical staining of rat dorsal root ganglion (DRG) using Anti-TRPV6 Antibody (ABIN7043857, ABIN7043998 and ABIN7043999), (1:100). A. TRPV6 channel (red) in DRG neurons. B. Staining with mouse anti-Parvalbumin (green) in the same DRG section. C. Confocal merge of TRPV6 and Parvalbumin demonstrates colocalization (arrows).