

Datasheet for ABIN7043858

anti-TMC6 antibody (Cytosolic, Intracellular)[Go to Product page](#)**1** Image

Overview

Quantity:	25 µL
Target:	TMC6
Binding Specificity:	AA 681-695, Cytosolic, Intracellular
Reactivity:	Human, Rat
Host:	Rabbit
Clonality:	Polyclonal
Application:	Western Blotting (WB)

Product Details

Immunogen:	Immunogen: Synthetic peptide Immunogen Sequence: CGPFRTLDTMYEAGR, corresponding to amino acid residues 681-695 of human TMC6
Isotype:	IgG
Characteristics:	Anti-TMC6 (EVER1) Antibody is directed against an epitope of the human Transmembrane channel-like protein 6. Anti-TMC6 (EVER1) Antibody (ABIN7043858, ABIN7045316 and ABIN7045317)) can be used in western blot analysis. It has been designed to TMC6 from rat, mouse and human samples.
Purification:	Affinity purified on immobilized antigen.

Target Details

Target:	TMC6
---------	------

Target Details

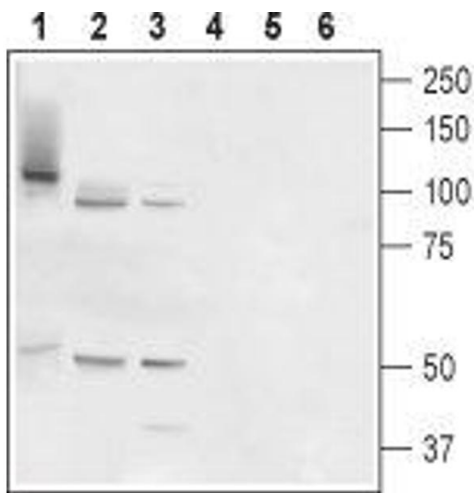
Alternative Name:	TMC6 (EVER1) (TMC6 Products)
Background:	Alternative names: TMC6 (EVER1), Transmembrane channel-like protein 6, Epidermodysplasia verruciformis protein 1, Protein LAK-4, LAK4P, EVIN1, EV1
Gene ID:	11322
NCBI Accession:	NM_001127198
UniProt:	Q7Z403

Application Details

Application Notes:	Optimal working dilution should be determined by the investigator.
Restrictions:	For Research Use only

Handling

Format:	Lyophilized
Reconstitution:	25 µL, 50 µL or 0.2 mL double distilled water (DDW), depending on the sample size.
Concentration:	0.85 mg/mL
Buffer:	Reconstituted antibody contains phosphate buffered saline (PBS), pH 7.4, 1 % BSA, 0.05 % Sodium azide.
Preservative:	Sodium azide
Precaution of Use:	This product contains Sodium azide: a POISONOUS AND HAZARDOUS SUBSTANCE which should be handled by trained staff only.
Storage:	RT, 4 °C, -20 °C
Storage Comment:	<p>Storage before reconstitution: The antibody ships as a lyophilized powder at room temperature. Upon arrival, it should be stored at -20°C.</p> <p>Storage after reconstitution: The reconstituted solution can be stored at 4°C for up to 1 week. For longer periods, small aliquots should be stored at -20°C. Avoid multiple freezing and thawing. Centrifuge all antibody preparations before use (10000 x g 5 min).</p>



Western Blotting

Image 1. Western blot analysis of rat prostate (lanes 1 and 4), testis (lanes 2 and 5) and placenta (lanes 3 and 6): - 1-3. Anti-TMC6 (EVER1) Antibody (ABIN7043858, ABIN7045316 and ABIN7045317), (1:800).4-6. Anti-TMC6 (EVER1) Antibody, preincubated with TMC6/EVER1 Blocking Peptide (#BLP-TC006).