



[Go to Product page](#)

Datasheet for ABIN7043863

anti-TMEM66 antibody (Intracellular, Lumenal Region)

3 Images

Overview

Quantity:	25 µL
Target:	TMEM66
Binding Specificity:	AA 141-155, Intracellular, Lumenal Region
Reactivity:	Human, Mouse, Rat
Host:	Rabbit
Clonality:	Polyclonal
Conjugate:	This TMEM66 antibody is un-conjugated
Application:	Western Blotting (WB)

Product Details

Immunogen:	Immunogen: Synthetic peptide Immunogen Sequence: (C)ELGLSKLKESGKHQS, corresponding to amino acid residues 141-155 of rat SARAF
Isotype:	IgG
Characteristics:	Anti-TMEM66 Antibody (ABIN7043863, ABIN7044034 and ABIN7044035)) is a highly specific antibody directed against an epitope of rat transmembrane protein 66. The antibody can be used in western blot and immunohistochemistry applications. It has been designed to recognize TMEM66 from human, rat, and mouse samples.
Purification:	Affinity purified on immobilized antigen.

Target Details

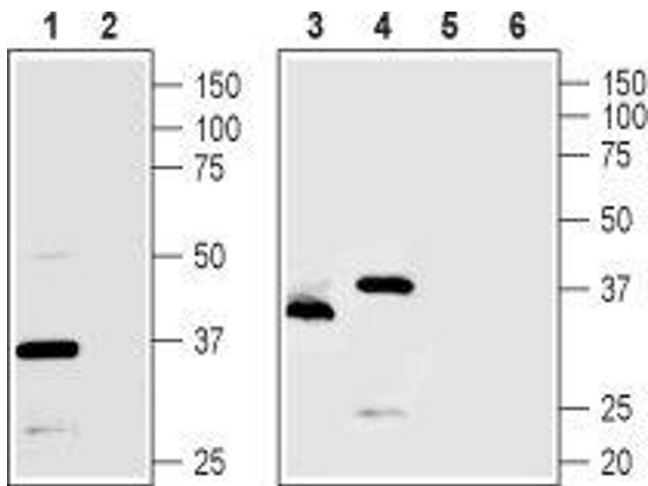
Target:	TMEM66
Alternative Name:	TMEM66 (TMEM66 Products)
Background:	Alternative names: TMEM66, Store-operated calcium entry-associated regulatory factor, SOCE-associated regulatory factor, SARAF, Transmembrane protein 66
Gene ID:	290796
NCBI Accession:	NM_016127
UniProt:	Q6AYN2

Application Details

Application Notes:	Optimal working dilution should be determined by the investigator.
Restrictions:	For Research Use only

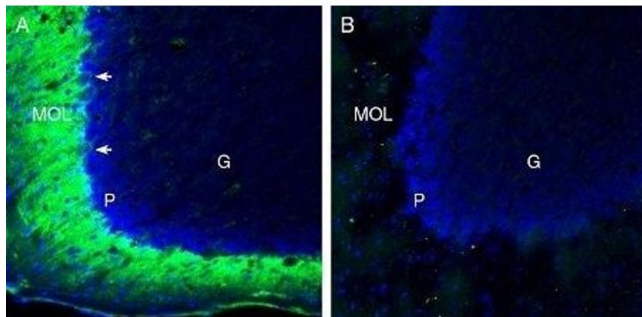
Handling

Format:	Lyophilized
Reconstitution:	25 µL, 50 µL or 0.2 mL double distilled water (DDW), depending on the sample size.
Concentration:	0.85 mg/mL
Buffer:	Reconstituted antibody contains phosphate buffered saline (PBS), pH 7.4, 1 % BSA, 0.05 % Sodium azide.
Preservative:	Sodium azide
Precaution of Use:	This product contains Sodium azide: a POISONOUS AND HAZARDOUS SUBSTANCE which should be handled by trained staff only.
Storage:	RT, 4 °C, -20 °C
Storage Comment:	Storage before reconstitution: The antibody ships as a lyophilized powder at room temperature. Upon arrival, it should be stored at -20°C. Storage after reconstitution: The reconstituted solution can be stored at 4°C for up to 1 week. For longer periods, small aliquots should be stored at -20°C. Avoid multiple freezing and thawing. Centrifuge all antibody preparations before use (10000 x g 5 min).



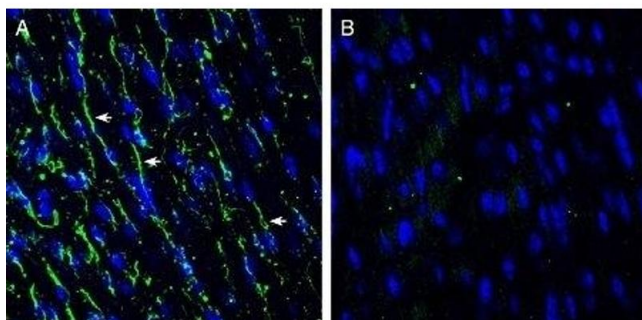
Western Blotting

Image 1. Western blot analysis of rat pancreas (lanes 1 and 2), Mouse MS1 endothelial cells (lanes 3 and 5) and human PANC1 pancreatic carcinoma cells (lanes 4 and 6) lysates: - 1,3,4. Anti-TMEM66 Antibody (ABIN7043863, ABIN7044034 and ABIN7044035), (1:500).2,5,6. Anti-TMEM66 Antibody, preincubated with TMEM66 Blocking Peptide (#BLP-CC067).



Immunohistochemistry

Image 2. Expression of TMEM66 in mouse cerebellum - Immunohistochemical staining of perfusion-fixed frozen mouse brain sections with Anti-TMEM66 Antibody (ABIN7043863, ABIN7044034 and ABIN7044035), (1:200), followed by goat anti-rabbit-AlexaFluor-488. A. TMEM66 immunoreactivity (green) appears in the molecular layer (MOL) and in neurons of the purkinje cell layer (P, arrows). B. Pre-incubation of the antibody with TMEM66 Blocking Peptide (#BLP-CC067), suppresses staining. Cell nuclei are stained with DAPI (blue). G = granule layer.



Immunohistochemistry

Image 3. Expression of TMEM66 in mouse heart - Immunohistochemical staining of frozen mouse heart sections with Anti-TMEM66 Antibody (ABIN7043863, ABIN7044034 and ABIN7044035), (1:200), followed by goat anti-rabbit-AlexaFluor-488. A. TMEM66 staining (green) appears along the lateral wall of muscle fibers (arrows). B. Pre-incubation of the antibody with TMEM66 Blocking Peptide (#BLP-CC067), suppresses staining. Cell nuclei are stained with DAPI (blue).