

Datasheet for ABIN7043864

anti-TMEM66 antibody (Intracellular, Lumenal Region) (Atto 594)



[Go to Product page](#)

1 Image

Overview

Quantity:	50 µL
Target:	TMEM66
Binding Specificity:	AA 141-155, Intracellular, Lumenal Region
Reactivity:	Human, Mouse, Rat
Host:	Rabbit
Clonality:	Polyclonal
Conjugate:	This TMEM66 antibody is conjugated to Atto 594
Application:	Immunofluorescence (IF), Immunohistochemistry (IHC)

Product Details

Immunogen:	Immunogen: Synthetic peptide Immunogen Sequence: (C)ELGLSKLKESGKHQS, corresponding to amino acid residues 141-155 of rat SARAF
Isotype:	IgG
Characteristics:	Anti-TMEM66 Antibody (ABIN7043863, ABIN7044034 and ABIN7044035) is a highly specific antibody directed against an epitope of rat transmembrane protein 66. The antibody can be used in western blot analysis. It has been designed to recognize TMEM66 from human, rat, and mouse samples. \nAnti-TMEM66-ATTO Fluor-594 Antibody (#ABIN7043864) is directly labeled with an ATTO-594 fluorescent dye. ATTO dyes are characterized by strong absorption (high extinction coefficient), high fluorescence quantum yield, and high photo-stability. The ATTO-594 fluorescent label belongs to the class of Rhodamine dyes and can be used with fluorescent equipment typically optimized to detect Texas Red and Alexa-594. Anti-TMEM66-ATTO Fluor-

Product Details

	594 Antibody is especially suited for experiments requiring simultaneous labeling of different markers.
Purification:	Affinity purified on immobilized antigen.

Target Details

Target:	TMEM66
Alternative Name:	TMEM66 (TMEM66 Products)
Background:	Alternative names: TMEM66, Store-operated calcium entry-associated regulatory factor, SOCE-associated regulatory factor, SARAF, Transmembrane protein 66
Gene ID:	290796
NCBI Accession:	NM_016127
UniProt:	Q6AYN2

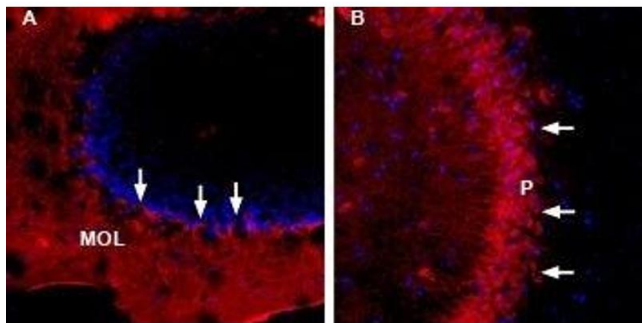
Application Details

Application Notes:	Optimal working dilution should be determined by the investigator.
Restrictions:	For Research Use only

Handling

Format:	Lyophilized
Reconstitution:	50 µL double distilled water (DDW).
Concentration:	1 mg/mL
Buffer:	Reconstituted antibody contains phosphate buffered saline (PBS), pH 7.4, 1 % BSA, 0.05 % Sodium azide.
Preservative:	Sodium azide
Precaution of Use:	This product contains Sodium azide: a POISONOUS AND HAZARDOUS SUBSTANCE which should be handled by trained staff only.
Storage:	RT, 4 °C, -20 °C
Storage Comment:	Storage before reconstitution: The antibody ships as a lyophilized powder at room temperature. Upon arrival, it should be stored at -20°C. Storage after reconstitution: The reconstituted solution can be stored at 4°C, protected from the

light, for up to 1 week. For longer periods, small aliquots should be stored at -20°C. Avoid multiple freezing and thawing. Centrifuge all antibody preparations before use (10000 x g 5 min).



Immunohistochemistry

Image 1. Expression of TMEM66 in mouse brain - Immunohistochemical staining of mouse cerebellum and hippocampus free floating-frozen sections using Anti-TMEM66-ATTO Fluor-594 Antibody (ABIN7043864). A. TMEM66 staining (red) in cerebellum appears in the molecular layer (MOL) and in Purkinje cells (arrows). B. In the hippocampus, TMEM66 immunostaining (red) appears in CA3 pyramidal layer (P), (arrows). Nuclei are stained using DAPI as the counterstain (blue).