



[Go to Product page](#)

Datasheet for ABIN7043867

anti-TREM2 antibody (Extracellular, N-Term) (PE)

3 Images

Overview

Quantity:	50 µL
Target:	TREM2
Binding Specificity:	AA 42-56, Extracellular, N-Term
Reactivity:	Mouse, Human, Rat
Host:	Rabbit
Clonality:	Polyclonal
Conjugate:	This TREM2 antibody is conjugated to PE
Application:	Flow Cytometry (FACS), Live Cell Imaging (LCI)

Product Details

Immunogen:	Immunogen: Synthetic peptide Immunogen Sequence: (C)KHWGRRKAW(S)RQLGE, corresponding to amino acid residues 42-56 of mouse TREM2
Isotype:	IgG
Characteristics:	A Rabbit Polyclonal Antibody to TREM2 (extracellular) conjugated to the fluorescent dye Phycoerythrin (PE).

Target Details

Target:	TREM2
Alternative Name:	Triggering receptor expressed on myeloid cells 2 (TREM2 Products)
Background:	Alternative names: Triggering receptor expressed on myeloid cells 2, Triggering receptor

Target Details

expressed on monocytes 2.

Gene ID: 54209

NCBI Accession: [NM_018965](#)

UniProt: [Q99NH8](#)

Application Details

Application Notes: Optimal working dilution should be determined by the investigator.

Restrictions: For Research Use only

Handling

Format: Lyophilized

Reconstitution: 50 µL double distilled water (DDW).

Concentration: 1 mg/mL

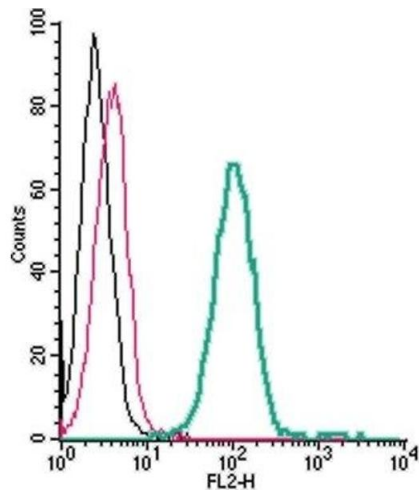
Buffer: Reconstituted antibody contains phosphate buffered saline (PBS), pH 7.4, 1 % BSA, 0.05 % Sodium azide.

Preservative: Sodium azide

Precaution of Use: This product contains Sodium azide: a POISONOUS AND HAZARDOUS SUBSTANCE which should be handled by trained staff only.

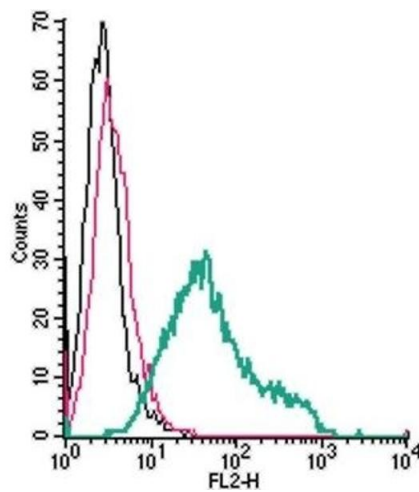
Storage: RT, 4 °C, -20 °C

Storage Comment: Storage before reconstitution: The antibody ships as a lyophilized powder at room temperature. Upon arrival, it should be stored at -20°C.
Storage after reconstitution: The reconstituted solution can be stored at 4°C, protected from the light, for up to 1 week. For longer periods, small aliquots should be stored at -20°C. Avoid multiple freezing and thawing. Centrifuge all antibody preparations before use (10000 x g 5 min).



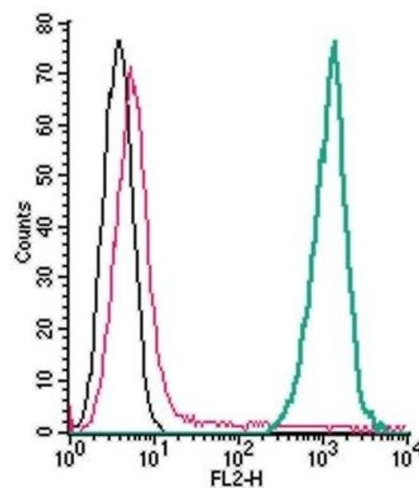
Flow Cytometry

Image 1. Cell surface detection of TREM2 by direct flow cytometry in live intact human THP-1 monocytic leukemia cells: (black line) Cells.(red line) Cells + Rabbit IgG isotype control-PE. (green line) Cells + Anti-TREM2 (extracellular)-PE Antibody (ABIN7043867, ABIN7045598, ABIN7045599 and ABIN7045600), (2.5 µg).



Flow Cytometry

Image 2. Cell surface detection of TREM2 by direct flow cytometry in live intact mouse BV-2 microglia cells: (black line) Cells.(red line) Cells + Rabbit IgG isotype control-PE. (green line) Cells + Anti-TREM2 (extracellular)-PE Antibody (ABIN7043867, ABIN7045598, ABIN7045599 and ABIN7045600), (2.5 µg).



Flow Cytometry

Image 3. Cell surface detection of TREM2 by direct flow cytometry in live intact mouse J774 macrophage cells: (black line) Cells.(red line) Cells + Rabbit IgG isotype control-PE. (green line) Cells + Anti-TREM2 (extracellular)-PE Antibody (ABIN7043867, ABIN7045598, ABIN7045599 and ABIN7045600), (2.5 µg).