

Datasheet for ABIN7043871
anti-TPCN1 antibody (2nd Lumenal Region)

2 Images

[Go to Product page](#)

Overview

Quantity:	50 µL
Target:	TPCN1
Binding Specificity:	2nd Lumenal Region, AA 221-235
Reactivity:	Human, Mouse, Rat
Host:	Rabbit
Clonality:	Polyclonal
Conjugate:	This TPCN1 antibody is un-conjugated
Application:	Western Blotting (WB), Immunohistochemistry (IHC)

Product Details

Immunogen:	Immunogen: Synthetic peptide Immunogen Sequence: (C)RNLRQIFQSLPPFMD, corresponding to amino acid residues 221-235 of rat TPCN1
Isotype:	IgG
Characteristics:	Anti-TPCN1 Antibody (ABIN7043871 and ABIN7044036) is a highly specific antibody directed against an epitope of the rat Two pore calcium channel protein 1. The antibody can be used in western blot and immunohistochemistry applications. It has been designed to recognize TPCN1 from rat, mouse, and human samples.
Purification:	Affinity purified on immobilized antigen.

Target Details

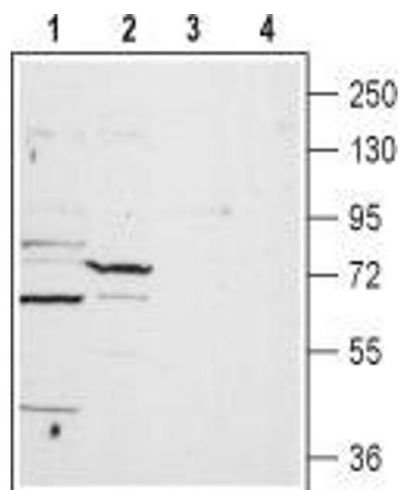
Target:	TPCN1
Alternative Name:	TPCN1 (TPCN1 Products)
Background:	Alternative names: TPCN1, Two pore calcium channel protein 1, Voltage-dependent calcium channel protein TPC1, Two pore segment channel 1
Gene ID:	246215
NCBI Accession:	NM_017901
UniProt:	Q9WTN5

Application Details

Application Notes:	Optimal working dilution should be determined by the investigator.
Restrictions:	For Research Use only

Handling

Format:	Lyophilized
Reconstitution:	50 µL or 0.2 mL double distilled water (DDW), depending on the sample size.
Concentration:	0.9 mg/mL
Buffer:	Reconstituted antibody contains phosphate buffered saline (PBS), pH 7.4, 1 % BSA, 0.05 % Sodium azide.
Preservative:	Sodium azide
Precaution of Use:	This product contains Sodium azide: a POISONOUS AND HAZARDOUS SUBSTANCE which should be handled by trained staff only.
Storage:	RT, 4 °C, -20 °C
Storage Comment:	<p>Storage before reconstitution: The antibody ships as a lyophilized powder at room temperature. Upon arrival, it should be stored at -20°C.</p> <p>Storage after reconstitution: The reconstituted solution can be stored at 4°C for up to 1 week. For longer periods, small aliquots should be stored at -20°C. Avoid multiple freezing and thawing. Centrifuge all antibody preparations before use (10000 x g 5 min).</p>



Western Blotting

Image 1. Western blot analysis of rat heart lysate (lanes 1 and 3) and liver membrane (lanes 2 and 4): - 1,2. Anti-TPCN1 Antibody (ABIN7043871 and ABIN7044036), (1:200).3,4. Anti-TPCN1 Antibody, preincubated with TPCN1 Blocking Peptide (#BLP-CC071).



Immunohistochemistry

Image 2. Expression of Two pore calcium channel protein 1 in rat lung - Immunohistochemical staining of paraffin embedded rat lung sections using Anti-TPCN1 Antibody (ABIN7043871 and ABIN7044036), (1:100). TPCN1 is expressed in the respiratory epithelium of the bronchioli (black arrows), in the smooth muscle of both bronchioli (red arrows) and blood vessels (blue arrows). Hematoxylin is used as the counterstain.