

Datasheet for ABIN7043872  
**anti-TPCN2 antibody (2nd Lumenal Region)**



[Go to Product page](#)

**3** Images

## Overview

Quantity:	25 µL
Target:	TPCN2
Binding Specificity:	2nd Lumenal Region, AA 187-199
Reactivity:	Human, Mouse, Rat
Host:	Rabbit
Clonality:	Polyclonal
Conjugate:	This TPCN2 antibody is un-conjugated
Application:	Western Blotting (WB), Immunohistochemistry (IHC), Immunofluorescence (IF)

## Product Details

Immunogen:	Immunogen: Synthetic peptide Immunogen Sequence: KKTLKSIRW(S)LPE(C), corresponding to amino acid residues 187-199 of mouse TPCN2 with replacement of amino acid 192 with serine (S)
Isotype:	IgG
Characteristics:	Anti-TPCN2 Antibody (ABIN7043872, ABIN7044037 and ABIN7044038)) is a highly specific antibody directed against an epitope of the mouse Two pore calcium channel protein 2. The antibody can be used in western blot and immunohistochemistry applications. It has been designed to recognize TPCN2 from mouse, rat, and human samples.
Purification:	Affinity purified on immobilized antigen.

### Target Details

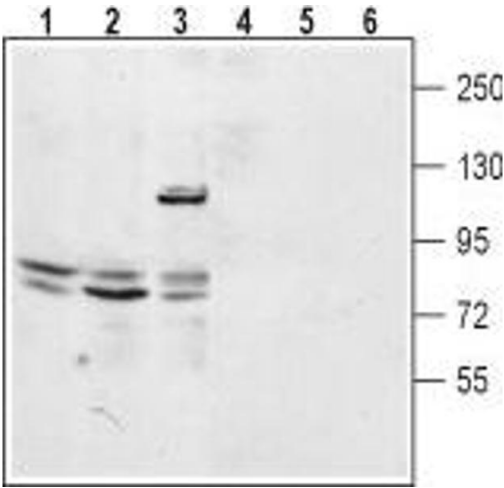
Target:	TPCN2
Alternative Name:	TPCN2 ( <a href="#">TPCN2 Products</a> )
Background:	Alternative names: TPCN2, Two pore calcium channel protein 2, Voltage-dependent calcium channel protein TPC2, SHEP10
Gene ID:	233979
NCBI Accession:	<a href="#">NM_139075</a>
UniProt:	<a href="#">Q8BWC0</a>

### Application Details

Application Notes:	Optimal working dilution should be determined by the investigator.
Restrictions:	For Research Use only

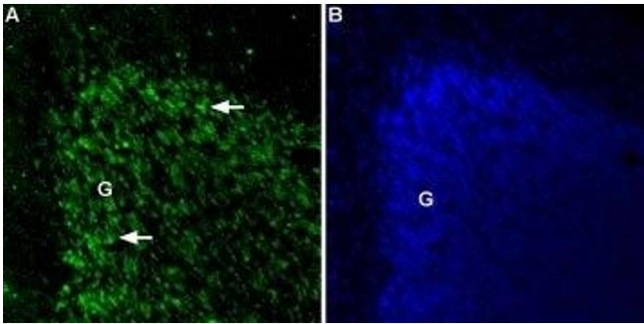
### Handling

Format:	Lyophilized
Reconstitution:	25 µL, 50 µL or 0.2 mL double distilled water (DDW), depending on the sample size.
Concentration:	0.8 mg/mL
Buffer:	Reconstituted antibody contains phosphate buffered saline (PBS), pH 7.4, 1 % BSA, 0.05 % Sodium azide.
Preservative:	Sodium azide
Precaution of Use:	This product contains Sodium azide: a POISONOUS AND HAZARDOUS SUBSTANCE which should be handled by trained staff only.
Storage:	RT, 4 °C, -20 °C
Storage Comment:	<p>Storage before reconstitution: The antibody ships as a lyophilized powder at room temperature. Upon arrival, it should be stored at -20°C.</p> <p>Storage after reconstitution: The reconstituted solution can be stored at 4°C for up to 1 week. For longer periods, small aliquots should be stored at -20°C. Avoid multiple freezing and thawing. Centrifuge all antibody preparations before use (10000 x g 5 min).</p>



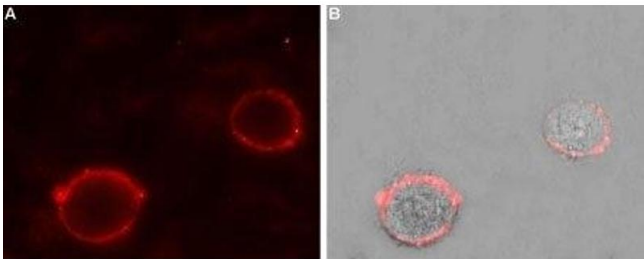
#### Western Blotting

**Image 1.** Western blot analysis of mouse kidney lysate (lanes 1 and 4), rat lung membrane (lanes 2 and 5) and human embryonic Kidney 293 cell lysate (lanes 3 and 6): - 1-3. Anti-TPCN2 Antibody (ABIN7043872, ABIN7044037 and ABIN7044038), (1:200). 4-6. Anti-TPCN2 Antibody, preincubated with TPCN2 Blocking Peptide (#BLP-CC072).



#### Immunohistochemistry

**Image 2.** Expression of Two pore calcium channel protein 2 in rat cerebellum - Immunohistochemical staining of Two pore calcium channel protein 2 in rat cerebellum using Anti-TPCN2 Antibody (ABIN7043872, ABIN7044037 and ABIN7044038). A. TPCN2 positive cells (green) appear in the granule cell layer (G) of the cerebellum (arrows). B. The extent of the granule layer is demonstrated with the counterstain DAPI (blue).



#### Immunocytochemistry

**Image 3.** Expression of Two pore calcium channel protein 2 in rat PC12 cells - Cell surface detection of Two pore calcium channel protein 2 in intact living rat pheochromocytoma (PC12) cells. A. Extracellular staining of cells using Anti-TPCN2 Antibody, (ABIN7043872, ABIN7044037 and ABIN7044038), (1:50), (red). B. Merge of A with the live view of the cell.