

Datasheet for ABIN704696

anti-Lactate Dehydrogenase C antibody (AA 231-332)[Go to Product page](#)**2** Images

Overview

| | |
|----------------------|--|
| Quantity: | 100 µL |
| Target: | Lactate Dehydrogenase C (LDHC) |
| Binding Specificity: | AA 231-332 |
| Reactivity: | Human, Rat |
| Host: | Rabbit |
| Clonality: | Polyclonal |
| Conjugate: | This Lactate Dehydrogenase C antibody is un-conjugated |
| Application: | Western Blotting (WB), ELISA, Immunohistochemistry (Paraffin-embedded Sections) (IHC (p)), Immunohistochemistry (Frozen Sections) (IHC (fro)), Immunofluorescence (Cultured Cells) (IF (cc)), Immunofluorescence (Paraffin-embedded Sections) (IF (p)) |

Product Details

| | |
|-----------------------|---|
| Immunogen: | KLH conjugated synthetic peptide derived from human Lactate Dehydrogenase C |
| Isotype: | IgG |
| Specificity: | This antibody will cross-react with LDHA and LDHB. |
| Cross-Reactivity: | Human, Rat |
| Predicted Reactivity: | Mouse,Dog,Cow,Horse,Rabbit |
| Purification: | Purified by Protein A. |

Target Details

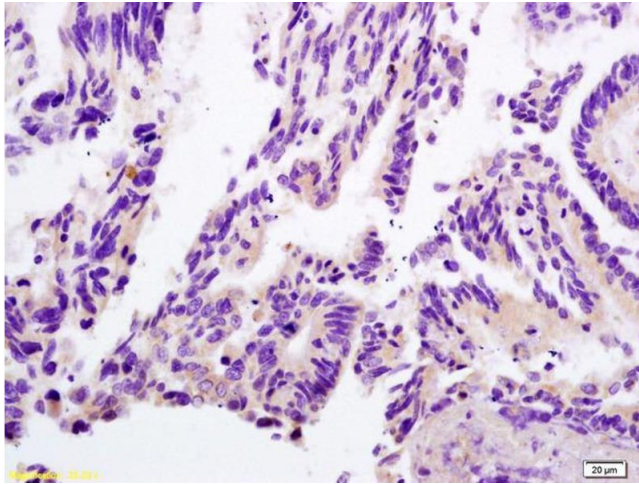
| | |
|-------------------|--|
| Target: | Lactate Dehydrogenase C (LDHC) |
| Alternative Name: | LDH-C (LDHC Products) |
| Background: | <p>Synonyms: CT32, LDH3, LDHX, L-lactate dehydrogenase C chain, LDH-C, Cancer/testis antigen 32, LDH testis subunit, LDH-X, LDHC, LDHA, LDHB</p> <p>Background: Lactate dehydrogenase C catalyzes the conversion of L-lactate and NAD to pyruvate and NADH in the final step of anaerobic glycolysis. LDHC is testis-specific and belongs to the lactate dehydrogenase family. Two transcript variants have been detected which differ in the 5' untranslated region. [provided by RefSeq, Jul 2008]</p> |
| Gene ID: | 3948 |
| UniProt: | P07864 |
| Pathways: | Ribonucleoside Biosynthetic Process , Warburg Effect |

Application Details

| | |
|--------------------|---|
| Application Notes: | WB 1:300-5000 ELISA 1:500-1000 IHC-P 1:200-400 IHC-F 1:100-500 IF(IHC-P) 1:50-200 IF(IHC-F) 1:50-200 IF(ICC) 1:50-200 |
| Restrictions: | For Research Use only |

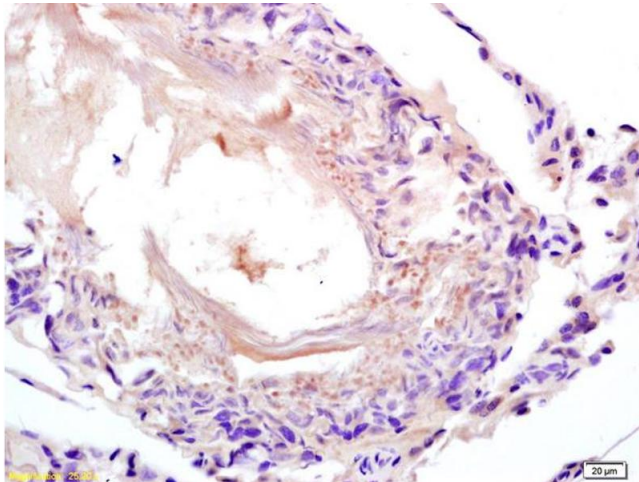
Handling

| | |
|--------------------|--|
| Format: | Liquid |
| Concentration: | 1 µg/µL |
| Buffer: | 0.01M TBS(pH 7.4) with 1 % BSA, 0.02 % Proclin300 and 50 % Glycerol. |
| Preservative: | ProClin |
| Precaution of Use: | This product contains ProClin: a POISONOUS AND HAZARDOUS SUBSTANCE, which should be handled by trained staff only. |
| Storage: | 4 °C,-20 °C |
| Storage Comment: | Shipped at 4°C. Store at -20°C for one year. Avoid repeated freeze/thaw cycles. |



Immunohistochemistry

Image 1. Formalin-fixed and paraffin embedded human rectal carcinoma labeled with Anti-LDHC/Cancer, testis antigen 32 Polyclonal Antibody, Unconjugated (ABIN704696) at 1:200 followed by conjugation to the secondary antibody and DAB staining.



Immunohistochemistry

Image 2. Formalin-fixed and paraffin embedded rat testis labeled with Anti-LDHC/Cancer, testis antigen 32 Polyclonal Antibody, Unconjugated (ABIN704696) at 1:200 followed by conjugation to the secondary antibody and DAB staining.