

Datasheet for ABIN704741
anti-AMBRA1 antibody (AA 221-320)

3 Images

1 Publication

[Go to Product page](#)

Overview

Quantity:	100 µL
Target:	AMBRA1
Binding Specificity:	AA 221-320
Reactivity:	Rat
Host:	Rabbit
Clonality:	Polyclonal
Conjugate:	This AMBRA1 antibody is un-conjugated
Application:	Western Blotting (WB), ELISA, Immunohistochemistry (Paraffin-embedded Sections) (IHC (p)), Immunofluorescence (Cultured Cells) (IF (cc)), Immunofluorescence (Paraffin-embedded Sections) (IF (p)), Immunohistochemistry (Frozen Sections) (IHC (fro))

Product Details

Immunogen:	KLH conjugated synthetic peptide derived from human AMBRA1
Isotype:	IgG
Cross-Reactivity:	Rat
Predicted Reactivity:	Human,Mouse,Dog,Horse,Chicken,Rabbit
Purification:	Purified by Protein A.

Target Details

Target:	AMBRA1
---------	--------

Target Details

Alternative Name:	AMBRA1 (AMBRA1 Products)
Background:	<p>Synonyms: DCAF3, WDR94, Activating molecule in BECN1-regulated autophagy protein 1, AMBRA1, KIAA1736</p> <p>Background: Regulates autophagy and development of the nervous system. Involved in autophagy in controlling protein turnover during neuronal development, and in regulating normal cell survival and proliferation (By similarity).</p>
Gene ID:	55626
UniProt:	Q9C0C7
Pathways:	Autophagy

Application Details

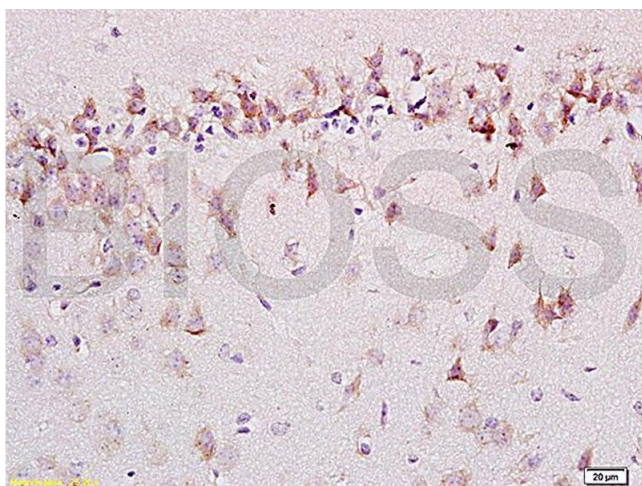
Application Notes:	<p>WB 1:300-5000</p> <p>ELISA 1:500-1000</p> <p>IHC-P 1:200-400</p> <p>IHC-F 1:100-500</p> <p>IF(IHC-P) 1:50-200</p> <p>IF(IHC-F) 1:50-200</p> <p>IF(ICC) 1:50-200</p>
Restrictions:	For Research Use only

Handling

Format:	Liquid
Concentration:	1 µg/µL
Buffer:	0.01M TBS(pH 7.4) with 1 % BSA, 0.02 % Proclin300 and 50 % Glycerol.
Preservative:	ProClin
Precaution of Use:	This product contains ProClin: a POISONOUS AND HAZARDOUS SUBSTANCE, which should be handled by trained staff only.
Storage:	4 °C, -20 °C
Storage Comment:	Shipped at 4°C. Store at -20°C for one year. Avoid repeated freeze/thaw cycles.
Expiry Date:	12 months

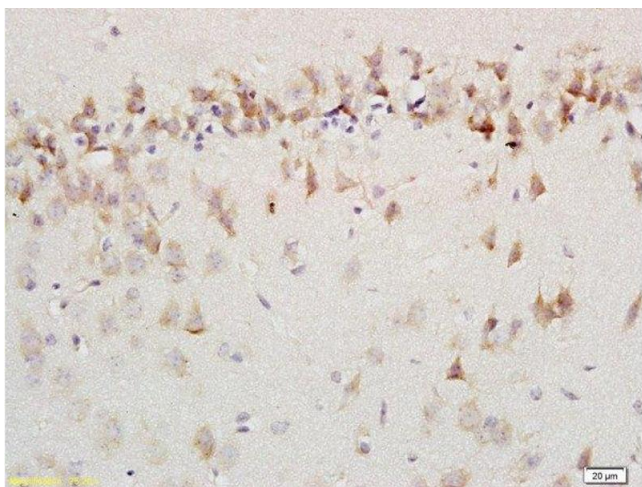
Product cited in: Song, Kou, Zou, Gao, Zeng, Xie: "Involvement of autophagy in tri-ortho-cresyl phosphate-induced delayed neuropathy in hens." in: **Neurochemistry international**, Vol. 64, pp. 1-8, (2013) ([PubMed](#)).

Images



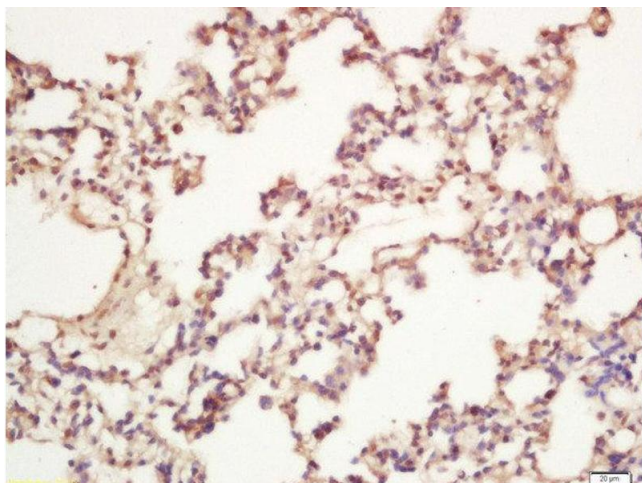
Immunohistochemistry

Image 1. Formalin-fixed and paraffin embedded labeled with rat brain Anti-AMBRA1 Polyclonal Antibody, Unconjugated (ABIN704741) 1:200 followed by conjugation to the secondary antibody and DAB staining



Immunohistochemistry (Paraffin-embedded Sections)

Image 2. Formalin-fixed and paraffin embedded labeled with rat brain Anti-AMBRA1 Polyclonal Antibody, Unconjugated 1:200 followed by conjugation to the secondary antibody and DAB staining



Immunohistochemistry (Paraffin-embedded Sections)

Image 3. Formalin-fixed and paraffin embedded rat lung labeled with Rabbit Anti-AMBRA1 Polyclonal Antibody, Unconjugated 1:200 followed by conjugation to the secondary antibody and DAB staining