

Datasheet for ABIN705041
anti-BCMA antibody (AA 12-110)

3 Images

[Go to Product page](#)

Overview

Quantity:	100 µL
Target:	BCMA (TNFRSF17)
Binding Specificity:	AA 12-110
Reactivity:	Human, Mouse
Host:	Rabbit
Clonality:	Polyclonal
Conjugate:	This BCMA antibody is un-conjugated
Application:	Western Blotting (WB), ELISA, Flow Cytometry (FACS), Immunohistochemistry (Paraffin-embedded Sections) (IHC (p)), Immunofluorescence (Paraffin-embedded Sections) (IF (p)), Immunohistochemistry (Frozen Sections) (IHC (fro)), Immunofluorescence (Cultured Cells) (IF (cc))

Product Details

Immunogen:	KLH conjugated synthetic peptide derived from human BCMA
Isotype:	IgG
Cross-Reactivity:	Human, Mouse
Predicted Reactivity:	Rat
Purification:	Purified by Protein A.

Target Details

Target:	BCMA (TNFRSF17)
---------	-----------------

Target Details

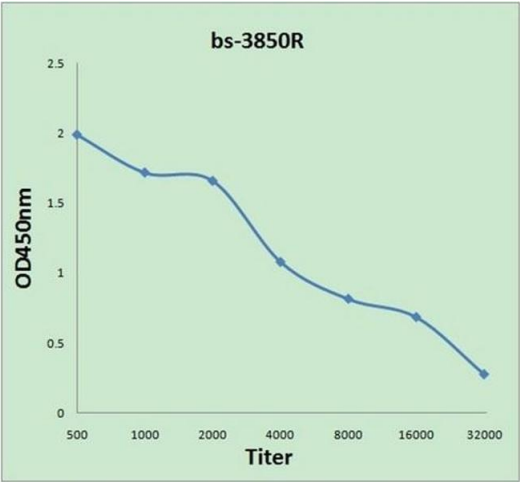
Alternative Name:	BCMA/CD269 (TNFRSF17 Products)
Background:	<p>Synonyms: BCM, BCMA, CD269, TNFRSF13A, Tumor necrosis factor receptor superfamily member 17, B-cell maturation protein, TNFRSF17</p> <p>Background: Receptor for TNFSF13B/BLyS/BAFF and TNFSF13/APRIL. Promotes B-cell survival and plays a role in the regulation of humoral immunity. Activates NF-kappa-B and JNK.</p>
Gene ID:	608
UniProt:	Q02223

Application Details

Application Notes:	<p>WB 1:300-5000</p> <p>ELISA 1:500-1000</p> <p>FCM 1:20-100</p> <p>IHC-P 1:200-400</p> <p>IHC-F 1:100-500</p> <p>IF(IHC-P) 1:50-200</p> <p>IF(IHC-F) 1:50-200</p> <p>IF(ICC) 1:50-200</p>
Restrictions:	For Research Use only

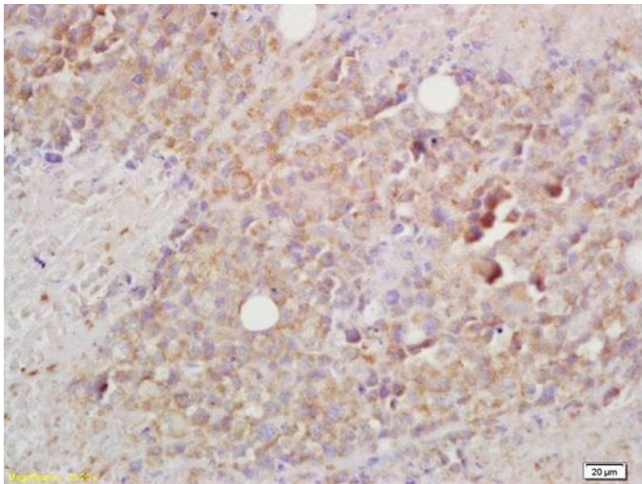
Handling

Format:	Liquid
Concentration:	1 µg/µL
Buffer:	0.01M TBS(pH 7.4) with 1 % BSA, 0.02 % Proclin300 and 50 % Glycerol.
Preservative:	ProClin
Precaution of Use:	This product contains ProClin: a POISONOUS AND HAZARDOUS SUBSTANCE, which should be handled by trained staff only.
Storage:	4 °C,-20 °C
Storage Comment:	Shipped at 4°C. Store at -20°C for one year. Avoid repeated freeze/thaw cycles.
Expiry Date:	12 months



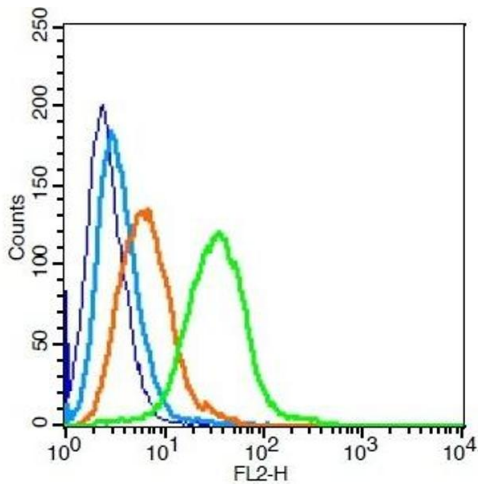
ELISA

Image 1. Antigen: 0.2 µg/100 µL Primary: Antiserum, 1:500, 1:1000, 1:2000, 1:4000, 1:8000, 1:16000, 1:32000; Secondary: HRP conjugated Goat Anti-Rabbit IgG at 1: 5000; TMB staining; Read the data in MicroplateReader by 450nm.



Immunohistochemistry

Image 2. Formalin-fixed and paraffin embedded mouse lymphoma labeled with Rabbit Anti BCMA/CD269 Polyclonal Antibody, Unconjugated (ABIN705041) at 1:200 followed by conjugation to the secondary antibody and DAB staining



Flow Cytometry

Image 3. Raji cells probed with BCMA/CD269 Polyclonal Antibody, Unconjugated at 1:50 for 30 minutes followed by incubation with a conjugated secondary (PE Conjugated) (green) for 30 minutes compared to control cells (blue), secondary only (light blue) and isotype control (orange).