



[Go to Product page](#)

Datasheet for ABIN705116  
**anti-EDNRB antibody (AA 378-442)**

1 Image

2 Publications

### Overview

Quantity:	100 µL
Target:	EDNRB
Binding Specificity:	AA 378-442
Reactivity:	Mouse, Rat
Host:	Rabbit
Clonality:	Polyclonal
Conjugate:	This EDNRB antibody is un-conjugated
Application:	Western Blotting (WB), ELISA, Flow Cytometry (FACS)

### Product Details

Immunogen:	KLH conjugated synthetic peptide derived from human Endolin B Receptor
Isotype:	IgG
Cross-Reactivity:	Mouse, Rat
Predicted Reactivity:	Human,Dog,Cow,Pig,Horse,Chicken,Rabbit
Purification:	Purified by Protein A.

### Target Details

Target:	EDNRB
Alternative Name:	ETBR/Endothelin B Receptor ( <a href="#">EDNRB Products</a> )
Background:	Synonyms: ABCDS, Ednra, Ednrb, EDNRB_HUMAN, Endothelin B receptor, Endothelin B receptor

## Target Details

---

precursor, Endothelin receptor Non selective type, Endothelin receptor non-selective type, Endothelin receptor type B, ET B, ET-B, ET-BR, ETB, ETRB, Hirschsprung disease 2, HSCR, HSCR2, EDNRB, HSCR, WS4A.

Background: The protein encoded by this gene is a G protein-coupled receptor which activates a phosphatidylinositol-calcium second messenger system. Its ligand, endothelin, consists of a family of three potent vasoactive peptides: ET1, ET2, and ET3. Studies suggest that the multigenic disorder, Hirschsprung disease type 2, is due to mutations in the endothelin receptor type B gene. Alternatively spliced transcript variants encoding different isoforms have been found for this gene. [provided by RefSeq].

---

Gene ID: 1910

---

UniProt: [P24530](#)

---

Pathways: [Cellular Response to Molecule of Bacterial Origin, cAMP Metabolic Process](#)

## Application Details

---

Application Notes: WB 1:300-5000  
ELISA 1:500-1000  
FCM 1:20-100

---

Restrictions: For Research Use only

## Handling

---

Format: Liquid

---

Concentration: 1 µg/µL

---

Buffer: 0.01M TBS( pH 7.4) with 1 % BSA, 0.02 % Proclin300 and 50 % Glycerol.

---

Preservative: ProClin

---

Precaution of Use: This product contains ProClin: a POISONOUS AND HAZARDOUS SUBSTANCE, which should be handled by trained staff only.

---

Storage: 4 °C,-20 °C

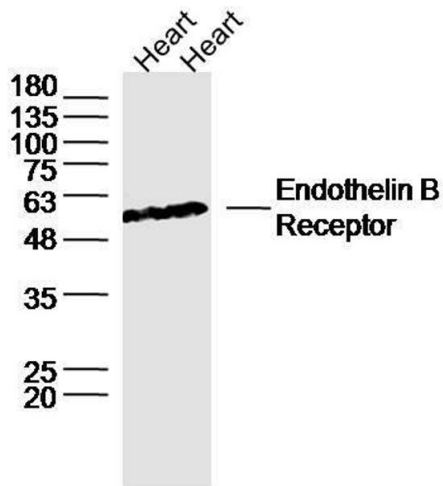
---

Storage Comment: Shipped at 4°C. Store at -20°C for one year. Avoid repeated freeze/thaw cycles.

---

Expiry Date: 12 months

Product cited in: Prayitnaningsih, Sujuti, Effendi, Abdullah, Anandita, Yohana, Permatasari, Widodo: "Neuropathy optic glaucomatosa induced by systemic hypertension through activation endothelin-1 signaling pathway in central retinal artery in rats." in: **International journal of ophthalmology**, Vol. 9, Issue 11, pp. 1568-1577, (2016) ([PubMed](#)).



#### Western Blotting

**Image 1.** Lane 1: Rat heart lysates, Lane 2: Mouse heart lysates probed with ETBR/Endothelin B Receptor Polyclonal Antibody, unconjugated at 1:300 overnight at 4°C followed by a conjugated secondary antibody for 60 minutes at 37°C.