



Datasheet for ABIN705656
anti-ADORA1 antibody (AA 151-250)



[Go to Product page](#)

1 Image

Overview

Quantity:	100 µL
Target:	ADORA1
Binding Specificity:	AA 151-250
Reactivity:	Rat
Host:	Rabbit
Clonality:	Polyclonal
Conjugate:	This ADORA1 antibody is un-conjugated
Application:	Western Blotting (WB), ELISA, Immunohistochemistry (Paraffin-embedded Sections) (IHC (p)), Immunofluorescence (Cultured Cells) (IF (cc)), Immunofluorescence (Paraffin-embedded Sections) (IF (p)), Immunohistochemistry (Frozen Sections) (IHC (fro))

Product Details

Immunogen:	KLH conjugated synthetic peptide derived from human ADORA1
Isotype:	IgG
Cross-Reactivity:	Rat
Predicted Reactivity:	Human,Mouse,Dog,Pig,Horse,Rabbit
Purification:	Purified by Protein A.

Target Details

Target:	ADORA1
---------	--------

Target Details

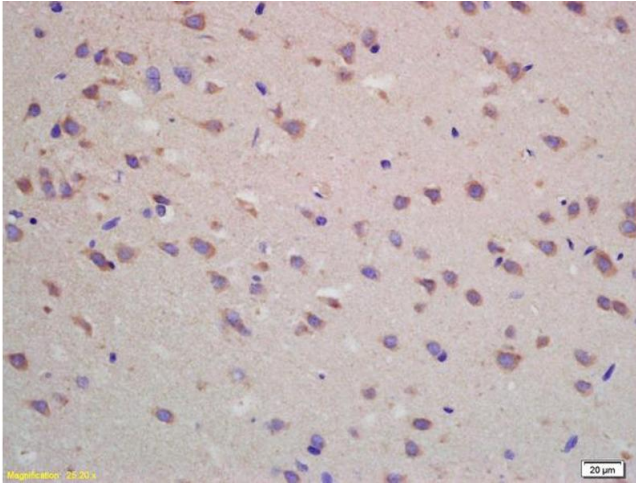
Alternative Name:	ADORA1 (ADORA1 Products)
Background:	Synonyms: RDC7, Adenosine receptor A1, ADORA1 Background: Receptor for adenosine. The activity of this receptor is mediated by G proteins which inhibit adenylyl cyclase.
Gene ID:	134
UniProt:	P30542
Pathways:	EGFR Signaling Pathway , Negative Regulation of Hormone Secretion , Synaptic Membrane

Application Details

Application Notes:	WB 1:300-5000 ELISA 1:500-1000 IHC-P 1:200-400 IHC-F 1:100-500 IF(IHC-P) 1:50-200 IF(IHC-F) 1:50-200 IF(ICC) 1:50-200
Restrictions:	For Research Use only

Handling

Format:	Liquid
Concentration:	1 µg/µL
Buffer:	0.01M TBS(pH 7.4) with 1 % BSA, 0.02 % Proclin300 and 50 % Glycerol.
Preservative:	ProClin
Precaution of Use:	This product contains ProClin: a POISONOUS AND HAZARDOUS SUBSTANCE, which should be handled by trained staff only.
Storage:	4 °C,-20 °C
Storage Comment:	Shipped at 4°C. Store at -20°C for one year. Avoid repeated freeze/thaw cycles.
Expiry Date:	12 months



Immunohistochemistry

Image 1. Formalin-fixed and paraffin embedded rat brain labeled with Rabbit Anti ADORA1 Polyclonal Antibody, Unconjugated (ABIN705656) at 1:200 followed by conjugation to the secondary antibody and DAB staining