

Datasheet for ABIN705671  
**anti-ADAM17 antibody (AA 201-300)**[Go to Product page](#)

4 Images

1 Publication

## Overview

Quantity:	100 µL
Target:	ADAM17
Binding Specificity:	AA 201-300
Reactivity:	Human, Rat, Mouse
Host:	Rabbit
Clonality:	Polyclonal
Conjugate:	This ADAM17 antibody is un-conjugated
Application:	Western Blotting (WB), ELISA, Flow Cytometry (FACS), Immunohistochemistry (Paraffin-embedded Sections) (IHC (p)), Immunofluorescence (Cultured Cells) (IF (cc)), Immunofluorescence (Paraffin-embedded Sections) (IF (p)), Immunohistochemistry (Frozen Sections) (IHC (fro))

## Product Details

Immunogen:	KLH conjugated synthetic peptide derived from human ADAM17
Isotype:	IgG
Cross-Reactivity:	Human, Mouse, Rat
Predicted Reactivity:	Dog,Cow,Pig,Rabbit
Purification:	Purified by Protein A.

## Target Details

Target:	ADAM17
---------	--------

## Target Details

Alternative Name:	ADAM17 ( <a href="#">ADAM17 Products</a> )
Background:	<p>Synonyms: CSVP, TACE, NISBD, ADAM18, CD156B, NISBD1, Disintegrin and metalloproteinase domain-containing protein 17, ADAM 17, Snake venom-like protease, TNF-alpha convertase, TNF-alpha-converting enzyme, ADAM17</p> <p>Background: Cleaves the membrane-bound precursor of TNF-alpha to its mature soluble form. Responsible for the proteolytical release of soluble JAM3 from endothelial cells surface. Responsible for the proteolytic release of several other cell-surface proteins, including p75 TNF-receptor, interleukin 1 receptor type II, p55 TNF-receptor, transforming growth factor-alpha, L-selectin, growth hormone receptor, MUC1 and the amyloid precursor protein. Acts as an activator of Notch pathway by mediating cleavage of Notch, generating the membrane-associated intermediate fragment called Notch extracellular truncation (NEXT). Plays a role in the proteolytic processing of ACE2.</p>
Gene ID:	6868
UniProt:	<a href="#">P78536</a>
Pathways:	<a href="#">Notch Signaling</a> , <a href="#">EGFR Signaling Pathway</a> , <a href="#">Neurotrophin Signaling Pathway</a> , <a href="#">Response to Growth Hormone Stimulus</a>

## Application Details

Application Notes:	WB 1:300-5000 ELISA 1:500-1000 FCM 1:20-100 IHC-P 1:200-400 IHC-F 1:100-500 IF(IHC-P) 1:50-200 IF(IHC-F) 1:50-200 IF(ICC) 1:50-200
Restrictions:	For Research Use only

## Handling

Format:	Liquid
Concentration:	1 µg/µL
Buffer:	0.01M TBS( pH 7.4) with 1 % BSA, 0.02 % Proclin300 and 50 % Glycerol.

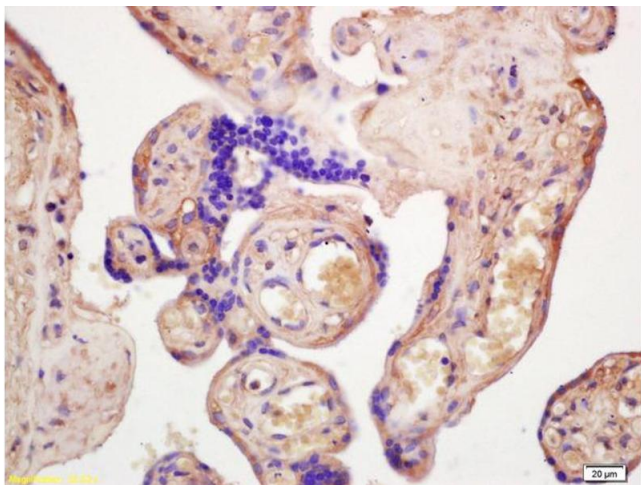
## Handling

Preservative:	ProClin
Precaution of Use:	This product contains ProClin: a POISONOUS AND HAZARDOUS SUBSTANCE, which should be handled by trained staff only.
Storage:	4 °C,-20 °C
Storage Comment:	Shipped at 4°C. Store at -20°C for one year. Avoid repeated freeze/thaw cycles.
Expiry Date:	12 months

## Publications

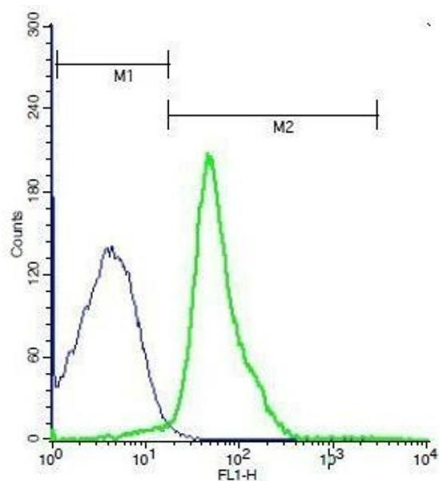
Product cited in:	Li, Xie, He, Wang, Duan, Yang, Wang: "Identification of ADAM10 and ADAM17 with potential roles in the spermatogenesis of the Chinese mitten crab, Eriocheir sinensis." in: <b>Gene</b> , Vol. 562, Issue 1, pp. 117-27, (2015) ( <a href="#">PubMed</a> ).
-------------------	--

## Images



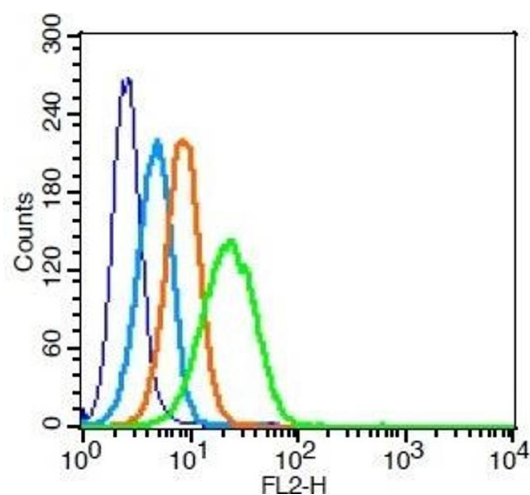
### Immunohistochemistry

**Image 1.** Formalin-fixed and paraffin embedded human placenta labeled with Anti-ADAM17/CD156b Polyclonal Antibody, Unconjugated (ABIN705671) at 1:200 followed by conjugation to the secondary antibody and DAB staining.



### Flow Cytometry

**Image 2.** Mouse thymocytes probed with Rabbit Anti-ADAM17 Polyclonal Antibody, Unconjugated .



### Flow Cytometry

**Image 3.** U937 cells probed with ADAM17 Polyclonal Antibody, Unconjugated at 1:100 for 30 minutes followed by incubation with a PE conjugated secondary (green) for 30 minutes compared to control cells (blue), secondary only (light blue) and isotype control (orange).

Please check the [product details page](#) for more images. Overall 4 images are available for ABIN705671.