



[Go to Product page](#)

Datasheet for ABIN706016

anti-APH1A antibody (AA 71-170)

3 Images

Overview

Quantity:	100 µL
Target:	APH1A
Binding Specificity:	AA 71-170
Reactivity:	Human, Mouse, Rat
Host:	Rabbit
Clonality:	Polyclonal
Conjugate:	This APH1A antibody is un-conjugated
Application:	Western Blotting (WB), ELISA, Flow Cytometry (FACS), Immunohistochemistry (Paraffin-embedded Sections) (IHC (p)), Immunofluorescence (Cultured Cells) (IF (cc)), Immunofluorescence (Paraffin-embedded Sections) (IF (p)), Immunohistochemistry (Frozen Sections) (IHC (fro))

Product Details

Immunogen:	KLH conjugated synthetic peptide derived from human APH1a
Isotype:	IgG
Cross-Reactivity:	Human, Mouse, Rat
Predicted Reactivity:	Dog,Cow,Pig,Horse,Rabbit
Purification:	Purified by Protein A.

Target Details

Target:	APH1A
---------	-------

Target Details

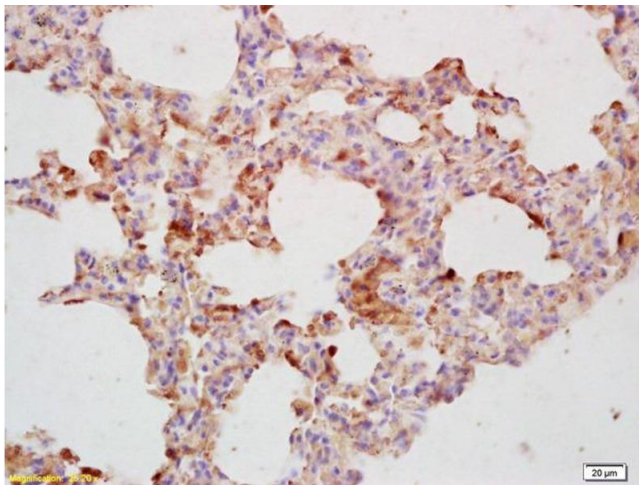
Alternative Name:	APH1a (APH1A Products)
Background:	<p>Synonyms: APH-1, APH-1A, CGI-78, 6530402N02Rik, Gamma-secretase subunit APH-1A, Aph-1alpha, Presenilin-stabilization factor, APH1A, PSF, UNQ579/PRO1141</p> <p>Background: Essential subunit of the gamma-secretase complex, an endoprotease complex that catalyzes the intramembrane cleavage of integral proteins such as Notch receptors and APP (beta-amyloid precursor protein). It probably represents a stabilizing cofactor for the presenilin homodimer that promotes the formation of a stable complex.</p>
Gene ID:	51107
UniProt:	Q96BI3
Pathways:	Notch Signaling , Neurotrophin Signaling Pathway

Application Details

Application Notes:	WB 1:300-5000 ELISA 1:500-1000 FCM 1:20-100 IHC-P 1:200-400 IHC-F 1:100-500 IF(IHC-P) 1:50-200 IF(IHC-F) 1:50-200 IF(ICC) 1:50-200
Restrictions:	For Research Use only

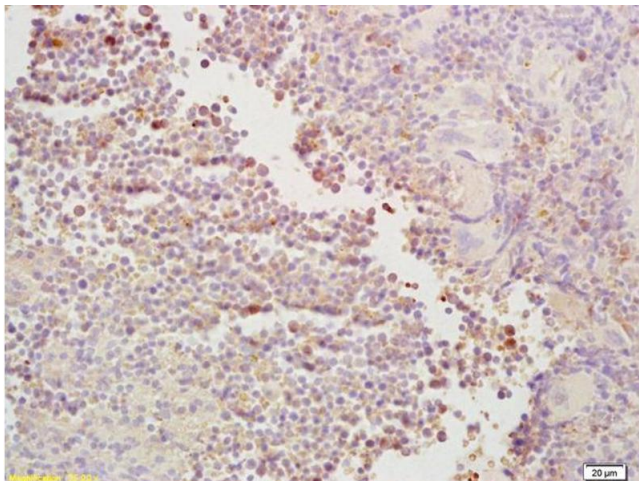
Handling

Format:	Liquid
Concentration:	1 µg/µL
Buffer:	0.01M TBS(pH 7.4) with 1 % BSA, 0.02 % Proclin300 and 50 % Glycerol.
Preservative:	ProClin
Precaution of Use:	This product contains ProClin: a POISONOUS AND HAZARDOUS SUBSTANCE, which should be handled by trained staff only.
Storage:	4 °C,-20 °C
Storage Comment:	Shipped at 4°C. Store at -20°C for one year. Avoid repeated freeze/thaw cycles.



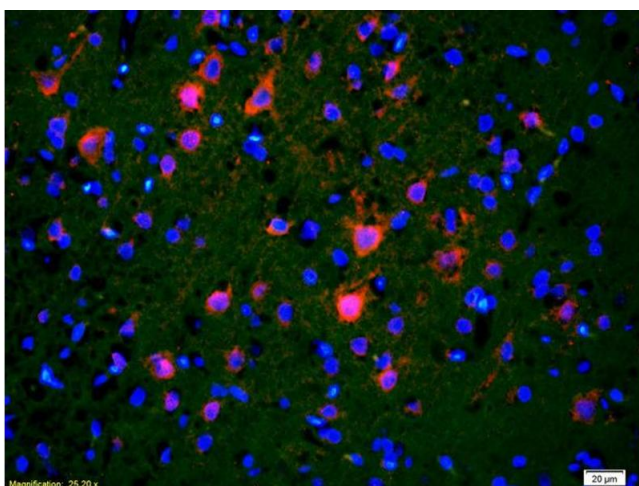
Immunohistochemistry

Image 1. Formalin-fixed and paraffin embedded mouse lung labeled with Rabbit Anti-APH1a gamma Polyclonal Antibody (ABIN706016) at 1:200 followed by conjugation to the secondary antibody and DAB staining.



Immunohistochemistry

Image 2. Formalin-fixed and paraffin embedded mouse spleen labeled with Rabbit Anti-APH1a Polyclonal Antibody (ABIN706016) at 1:200 followed by conjugation to the secondary antibody and DAB staining.



Immunofluorescence

Image 3. Formalin-fixed and paraffin-embedded rat brain labeled with Anti-APH1a Polyclonal Antibody, Unconjugated (ABIN706016) 1:200, overnight at 4°C, The secondary antibody was Goat Anti-Rabbit IgG, Cy3 conjugated used at 1:200 dilution for 40 minutes at 37°C.