

Datasheet for ABIN706076  
**anti-SCNN1G antibody (AA 188-290)**[Go to Product page](#)

## 2 Images

## Overview

Quantity:	100 µL
Target:	SCNN1G
Binding Specificity:	AA 188-290
Reactivity:	Mouse
Host:	Rabbit
Clonality:	Polyclonal
Conjugate:	This SCNN1G antibody is un-conjugated
Application:	Western Blotting (WB), ELISA, Immunohistochemistry (Paraffin-embedded Sections) (IHC (p))

## Product Details

Immunogen:	KLH conjugated synthetic peptide derived from human ENaCg
Isotype:	IgG
Cross-Reactivity:	Mouse
Predicted Reactivity:	Human,Rat,Dog,Rabbit
Purification:	Purified by Protein A.

## Target Details

Target:	SCNN1G
Alternative Name:	epithelial Sodium Channel gamma ( <a href="#">SCNN1G Products</a> )
Background:	Synonyms: PHA1, BESC3, ENaCg, SCNEG, ENaCgamma, Amiloride-sensitive sodium channel

## Target Details

subunit gamma, Epithelial Na(+) channel subunit gamma, Gamma-ENaC, Gamma-NaCH, Nonvoltage-gated sodium channel 1 subunit gamma, SCNN1G

Background: Sodium permeable non-voltage-sensitive ion channel inhibited by the diuretic amiloride. Mediates the electrodifusion of the luminal sodium (and water, which follows osmotically) through the apical membrane of epithelial cells. Plays an essential role in electrolyte and blood pressure homeostasis, but also in airway surface liquid homeostasis, which is important for proper clearance of mucus. Controls the reabsorption of sodium in kidney, colon, lung and sweat glands. Also plays a role in taste perception.

Gene ID: 6340

UniProt: [P51170](#)

## Application Details

Application Notes: WB 1:300-5000  
ELISA 1:500-1000  
IHC-P 1:200-400

Restrictions: For Research Use only

## Handling

Format: Liquid

Concentration: 1 µg/µL

Buffer: 0.01M TBS( pH 7.4) with 1 % BSA, 0.02 % Proclin300 and 50 % Glycerol.

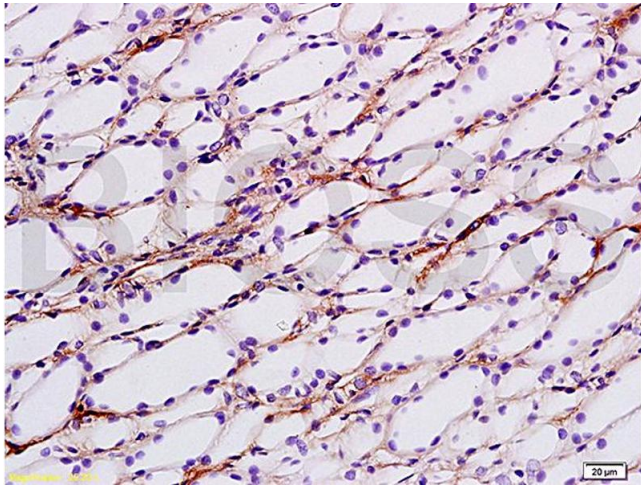
Preservative: ProClin

Precaution of Use: This product contains ProClin: a POISONOUS AND HAZARDOUS SUBSTANCE, which should be handled by trained staff only.

Storage: 4 °C,-20 °C

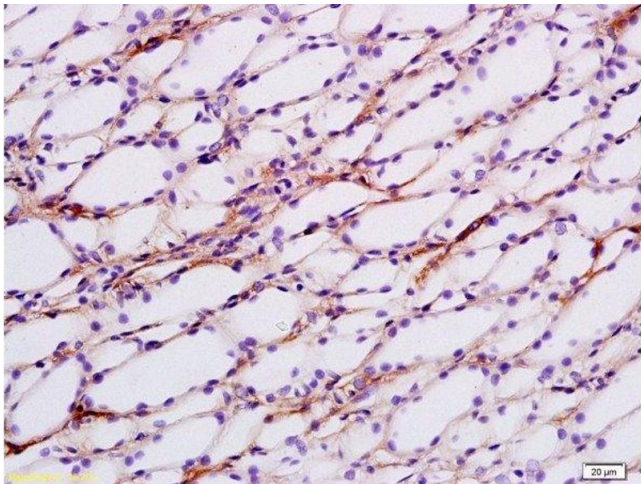
Storage Comment: Shipped at 4°C. Store at -20°C for one year. Avoid repeated freeze/thaw cycles.

Expiry Date: 12 months



#### Immunohistochemistry

**Image 1.** Formalin-fixed and paraffin embedded rat kidney tissue labeled with Anti-ENaCg/?ENaC Polyclonal Antibody, Unconjugated (ABIN706076) at 1:200 followed by conjugation to the secondary antibody and DAB staining



#### Immunohistochemistry (Paraffin-embedded Sections)

**Image 2.** Formalin-fixed and paraffin embedded rat kidney tissue labeled with Anti-ENaCg/γENaC Polyclonal Antibody, Unconjugated at 1:200 followed by conjugation to the secondary antibody and DAB staining