

Datasheet for ABIN706106

anti-E2F8 antibody**2** Images[Go to Product page](#)

Overview

Quantity:	100 µL
Target:	E2F8
Reactivity:	Human, Mouse, Rat, Pig, Chicken
Host:	Rabbit
Clonality:	Polyclonal
Conjugate:	This E2F8 antibody is un-conjugated
Application:	Flow Cytometry (FACS)

Product Details

Immunogen:	KLH conjugated synthetic peptide derived from human E2F8
Isotype:	IgG
Cross-Reactivity:	Chicken, Human, Mouse, Pig, Rat
Purification:	Purified by Protein A.

Target Details

Target:	E2F8
Alternative Name:	E2F8 (E2F8 Products)
Background:	<p>Synonyms: E2F 8, E2F family member 82, E2F transcription factor 8, E2F-8, E2f8, E2F8_HUMAN, FLJ23311, Transcription factor E2F8.</p> <p>Background: This gene encodes a member of a family of transcription factors which regulate the expression of genes required for progression through the cell cycle. The encoded protein</p>

Target Details

regulates progression from G1 to S phase by ensuring the nucleus divides at the proper time.
Multiple alternatively spliced variants, encoding the same protein, have been identified.
[provided by RefSeq, Jan 2012].

Molecular Weight: 94kDa

Gene ID: 79733

Application Details

Application Notes: WB(1:100-500)
Optimal working dilution should be determined by the investigator.

Restrictions: For Research Use only

Handling

Format: Liquid

Concentration: 1 µg/µL

Buffer: Aqueous buffered solution containing 1 % BSA, 50 % glycerol and 0.09 % sodium azide.

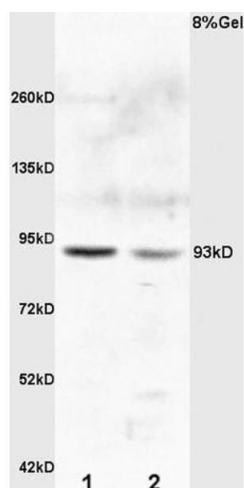
Preservative: Sodium azide

Precaution of Use: This product contains sodium azide: a POISONOUS AND HAZARDOUS SUBSTANCE which should be handled by trained staff only.

Storage: -20 °C

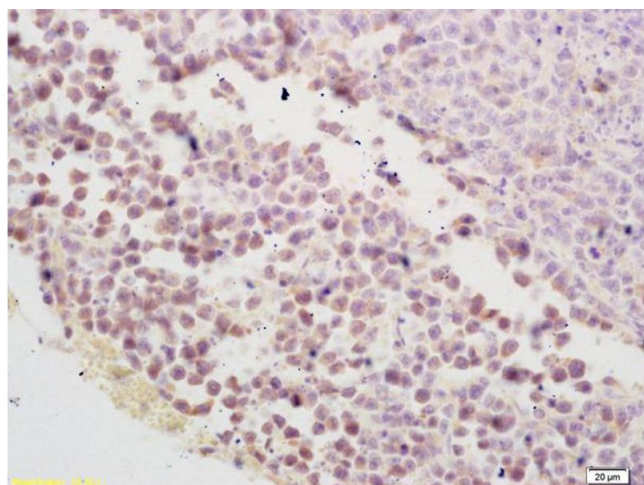
Storage Comment: Store at -20°C for 12 months.

Expiry Date: 12 months



SDS-PAGE

Image 1. L1 rat kidney lysates L2 rat brain lysates probed with Anti E2F8 Polyclonal Antibody, Unconjugated (ABIN706106) at 1:200 overnight at 4 °C. Followed by conjugation to secondary antibody at 1:3000 for 90 min at 37 °C. Predicted band 93kD. Observed band size:93kD.



Immunohistochemistry

Image 2. Formalin-fixed and paraffin embedded mouse colon carcinoma labeled with Rabbit Anti E2F8 Polyclonal Antibody, Unconjugated (ABIN706106) at 1:200 followed by conjugation to the secondary antibody and DAB staining