

Datasheet for ABIN706271
anti-ELAC2 antibody (AA 88-190)[Go to Product page](#)

2 Images

Overview

Quantity:	100 µL
Target:	ELAC2
Binding Specificity:	AA 88-190
Reactivity:	Human
Host:	Rabbit
Clonality:	Polyclonal
Conjugate:	This ELAC2 antibody is un-conjugated
Application:	ELISA, Immunofluorescence (Cultured Cells) (IF (cc)), Immunofluorescence (Paraffin-embedded Sections) (IF (p)), Immunohistochemistry (Paraffin-embedded Sections) (IHC (p)), Immunohistochemistry (Frozen Sections) (IHC (fro))

Product Details

Immunogen:	KLH conjugated synthetic peptide derived from human ELAC2
Isotype:	IgG
Cross-Reactivity:	Human
Predicted Reactivity:	Mouse,Rat,Dog,Rabbit
Purification:	Purified by Protein A.

Target Details

Target:	ELAC2
---------	-------

Target Details

Alternative Name:	ELAC2 (ELAC2 Products)
Background:	<p>Synonyms: elaC homolog 2, ElaC homolog protein 2, ELC2, Heredity prostate cancer protein 2, HPC2, putative prostate cancer susceptibility protein HPC2/ELAC2, Ribonuclease Z2, RNase Z2, tRNA 3 endonuclease 2, tRNase Z long form, tRNase Z2, Zinc phosphodiesterase ELAC protein 2.</p> <p>Background: ELAC2 is a zinc phosphodiesterase which displays some tRNA 3' processing endonuclease activity. It is thought to be involved in tRNA maturation, acting by removing a 3' trailer from precursor tRNA. ELAC2 also interacts with activated Smad family member 2 (Smad2) and its nuclear partner forkhead box H1 (also known as FAST-1), and reduced expression can suppress transforming growth factor-beta induced growth arrest. Mutations in this gene result in an increased risk of prostate cancer. A number of allelic variants have been investigated in hereditary prostate cancer.</p>
Gene ID:	60528

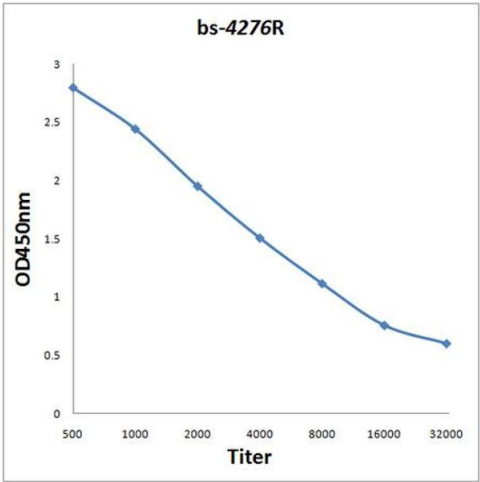
Application Details

Application Notes:	ELISA 1:500-1000 IHC-P 1:200-400 IHC-F 1:100-500 IF(IHC-P) 1:50-200 IF(IHC-F) 1:50-200 IF(ICC) 1:50-200
Restrictions:	For Research Use only

Handling

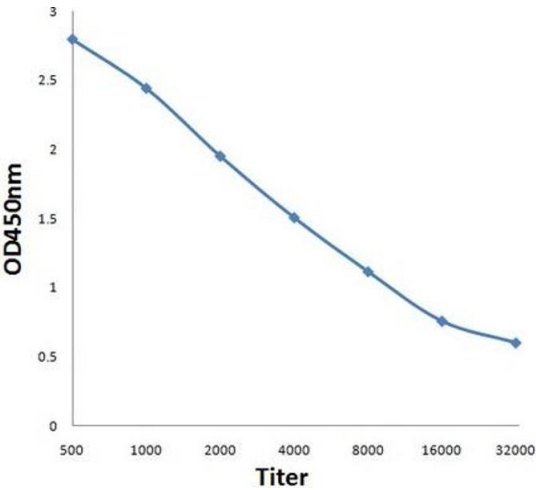
Format:	Liquid
Concentration:	1 µg/µL
Buffer:	0.01M TBS(pH 7.4) with 1 % BSA, 0.02 % Proclin300 and 50 % Glycerol.
Preservative:	ProClin
Precaution of Use:	This product contains ProClin: a POISONOUS AND HAZARDOUS SUBSTANCE, which should be handled by trained staff only.
Storage:	4 °C,-20 °C
Storage Comment:	Shipped at 4°C. Store at -20°C for one year. Avoid repeated freeze/thaw cycles.

Expiry Date: 12 months



ELISA

Image 1. Antigen: 0.2 µg/100 µL Primary: Antiserum, 1:500, 1:1000, 1:2000, 1:4000, 1:8000, 1:16000, 1:32000; Secondary: HRP conjugated Goat-Anti-Rabbit IgG at 1: 5000; TMB staining; Read the data in MicroplateReader by 450



ELISA

Image 2. Antigen: 0.2ug/100ul, Primary: Antiserum, 1:500, 1:1000, 1:2000, 1:4000, 1:8000, 1:16000, 1:32000, Secondary: HRP conjugated Goat-Anti-Rabbit IgG at 1: 5000, TMB staining, Read the data in MicroplateReader by 450nm