

Datasheet for ABIN707021
anti-TGF-beta antibody (AA 301-350)[Go to Product page](#)

2 Images

Overview

Quantity:	100 µL
Target:	TGF-beta (TGFb)
Binding Specificity:	AA 301-350
Reactivity:	Human, Mouse, Rat, Rabbit, Sheep
Host:	Rabbit
Clonality:	Polyclonal
Conjugate:	This TGF-beta antibody is un-conjugated
Application:	Western Blotting (WB), ELISA, Flow Cytometry (FACS), Immunofluorescence (Cultured Cells) (IF (cc)), Immunofluorescence (Paraffin-embedded Sections) (IF (p)), Immunohistochemistry (Paraffin-embedded Sections) (IHC (p)), Immunohistochemistry (Frozen Sections) (IHC (fro))

Product Details

Immunogen:	KLH conjugated synthetic peptide derived from human TGF Beta 1
Isotype:	IgG
Specificity:	This antibody will preferentially react with TGFB1, but will also detect TGFB2 (93 %) and TGFB3 (86 %) based upon sequence similarity.
Cross-Reactivity:	Human, Mouse, Rabbit, Rat, Sheep
Predicted Reactivity:	Dog,Cow,Pig,Guinea Pig
Purification:	Purified by Protein A.

Target Details

Target:	TGF-beta (TGFB)
Alternative Name:	TGF Beta 1+2+3 (TGFB Products)
Background:	<p>Synonyms: CED, LAP, DPD1, TGFB, TGFbeta, Transforming growth factor beta-1, TGF-beta-1, TGFB1, TGFB2, TGFB3</p> <p>Background: Multifunctional protein that controls proliferation, differentiation and other functions in many cell types. Many cells synthesize TGFB1 and have specific receptors for it. It positively and negatively regulates many other growth factors. It plays an important role in bone remodeling as it is a potent stimulator of osteoblastic bone formation, causing chemotaxis, proliferation and differentiation in committed osteoblasts. Can promote either T-helper 17 cells (Th17) or regulatory T-cells (Treg) lineage differentiation in a concentration-dependent manner. At high concentrations, leads to FOXP3-mediated suppression of RORC and down-regulation of IL-17 expression, favoring Treg cell development. At low concentrations in concert with IL-6 and IL-21, leads to expression of the IL-17 and IL-23 receptors, favoring differentiation to Th17 cells.</p>
Gene ID:	7040
UniProt:	P01137
Pathways:	EGFR Signaling Pathway , Cellular Response to Molecule of Bacterial Origin , Stem Cell Maintenance , Glycosaminoglycan Metabolic Process , Regulation of Muscle Cell Differentiation , Cell-Cell Junction Organization , Ribonucleoside Biosynthetic Process , Skeletal Muscle Fiber Development , Regulation of Carbohydrate Metabolic Process , Protein targeting to Nucleus

Application Details

Application Notes:	WB 1:300-5000 ELISA 1:500-1000 FCM 1:20-100 IHC-P 1:200-400 IHC-F 1:100-500 IF(IHC-P) 1:50-200 IF(IHC-F) 1:50-200 IF(ICC) 1:50-200
Restrictions:	For Research Use only

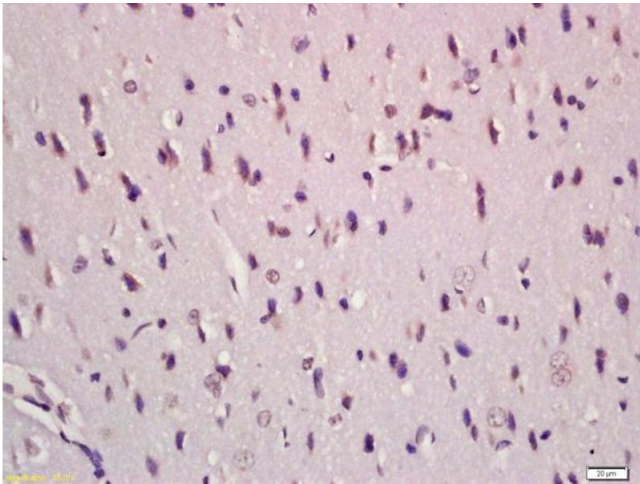
Handling

Format:	Liquid
---------	--------

Handling

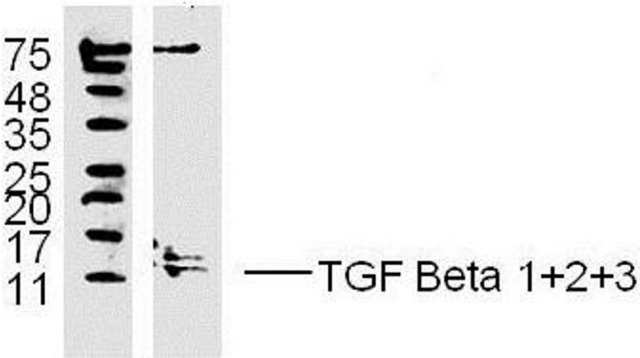
Concentration:	1 µg/µL
Buffer:	0.01M TBS(pH 7.4) with 1 % BSA, 0.02 % Proclin300 and 50 % Glycerol.
Preservative:	ProClin
Precaution of Use:	This product contains ProClin: a POISONOUS AND HAZARDOUS SUBSTANCE, which should be handled by trained staff only.
Storage:	4 °C,-20 °C
Storage Comment:	Shipped at 4°C. Store at -20°C for one year. Avoid repeated freeze/thaw cycles.
Expiry Date:	12 months

Images



Immunohistochemistry

Image 1. Formalin-fixed and paraffin embedded rat brain labeled with Anti-TGF Beta 1+2+3 Polyclonal Antibody, Unconjugated (ABIN707021) at 1:200 followed by conjugation to the secondary antibody and DAB staining



Western Blotting

Image 2. MDA-MB-231 lysates probed with TGF Beta 1+2+3 Polyclonal Antibody, unconjugated at 1:300 overnight at 4°C followed by a conjugated secondary antibody at 1:10000 for 60 minutes at 37°C.