

Datasheet for ABIN707141
anti-CYP2E1 antibody (AA 401-493)**2** Images**1** Publication[Go to Product page](#)

Overview

| | |
|----------------------|--|
| Quantity: | 100 µL |
| Target: | CYP2E1 |
| Binding Specificity: | AA 401-493 |
| Reactivity: | Human, Rat, Pig |
| Host: | Rabbit |
| Clonality: | Polyclonal |
| Conjugate: | This CYP2E1 antibody is un-conjugated |
| Application: | Western Blotting (WB), ELISA, Immunohistochemistry (Paraffin-embedded Sections) (IHC (p)), Immunofluorescence (Cultured Cells) (IF (cc)), Immunofluorescence (Paraffin-embedded Sections) (IF (p)), Immunohistochemistry (Frozen Sections) (IHC (fro)) |

Product Details

| | |
|-----------------------|--|
| Immunogen: | KLH conjugated synthetic peptide derived from human CYP2E1 |
| Isotype: | IgG |
| Cross-Reactivity: | Human, Pig, Rat |
| Predicted Reactivity: | Mouse,Dog,Cow,Sheep,Horse,Rabbit |
| Purification: | Purified by Protein A. |

Target Details

| | |
|---------|--------|
| Target: | CYP2E1 |
|---------|--------|

Target Details

| | |
|-------------------|--|
| Alternative Name: | CYP2E1 (CYP2E1 Products) |
| Background: | <p>Synonyms: CPE1, CYP2E, P450-J, P450C2E, Cytochrome P450 2E1, 4-nitrophenol 2-hydroxylase, CYP11E1, Cytochrome P450-J, CYP2E1</p> <p>Background: Metabolizes several precarcinogens, drugs, and solvents to reactive metabolites. Inactivates a number of drugs and xenobiotics and also bioactivates many xenobiotic substrates to their hepatotoxic or carcinogenic forms.</p> |
| Gene ID: | 1571 |
| UniProt: | P05181 |

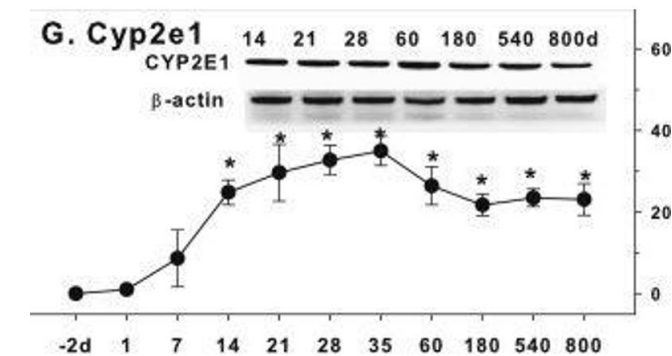
Application Details

| | |
|--------------------|--|
| Application Notes: | <p>WB 1:300-5000</p> <p>ELISA 1:500-1000</p> <p>IHC-P 1:200-400</p> <p>IHC-F 1:100-500</p> <p>IF(IHC-P) 1:50-200</p> <p>IF(IHC-F) 1:50-200</p> <p>IF(ICC) 1:50-200</p> |
| Restrictions: | For Research Use only |

Handling

| | |
|--------------------|--|
| Format: | Liquid |
| Concentration: | 1 µg/µL |
| Buffer: | 0.01M TBS(pH 7.4) with 1 % BSA, 0.02 % Proclin300 and 50 % Glycerol. |
| Preservative: | ProClin |
| Precaution of Use: | This product contains ProClin: a POISONOUS AND HAZARDOUS SUBSTANCE, which should be handled by trained staff only. |
| Storage: | 4 °C,-20 °C |
| Storage Comment: | Shipped at 4°C. Store at -20°C for one year. Avoid repeated freeze/thaw cycles. |
| Expiry Date: | 12 months |

Product cited in: Iwao, Ojima, Kobayashi, Kishi, Nara, Esaki, Shimada, Hiraoka, Tanabe, Kanai: "Liver atrophy after percutaneous transhepatic portal embolization occurs in two histological phases: Hepatocellular atrophy followed by apoptosis." in: **World journal of hepatology**, Vol. 9, Issue 32 , pp. 1227-1238, (2017) ([PubMed](#)).



Western Blotting

Image 1. Age-related expression of CYP-2 family gene/proteins in livers of male rats. (A) CAR, (B) Cyp2b2, (C) Cyp2b1, (D) Cyp2c6, (E) Cyp2c11, (F) Cyp2d2, (G) Cyp2e1. Livers from male SD rats at the fetus (-2 d before birth), the neonatal stage (1, 7, and 14 d), and at weanling (21 d), at puberty (28 and 35 d), at adult (60 and 180 d), and at aging (540 and 800 d), were collected to extract RNA, followed by qPCR analysis (n = 4-5 for each time point). *Significantly different from at birth, p < 0.05. For western blot insert, the neonatal (14 d), at weanling (21 d), at puberty (28 d), at adult (60 and 180 d), and at aging (540 and 800 d) were collected to extract protein. Aliquoted proteins (30 µg) were separated on NUPAGE 10 % BT gels and the representative western blot was inserted into the figure (n = 3). The molecular weight for CYP2B1 was 56 kD, CYP2E1 57 kD, and β-actin 43 kD. - figure provided by CiteAb. Source: PMID31396457

Immunohistochemistry

Image 2. Formalin-fixed and paraffin embedded human rectal carcinoma labeled with Rabbit Anti CYP2E1 Polyclonal Antibody, Unconjugated (ABIN707141) at 1:200 followed by conjugation to the secondary antibody and DAB staining

