



[Go to Product page](#)

Datasheet for ABIN7072204

## Recombinant anti-CD3E (Muromonab Biosimilar) antibody

### 1 Image

#### Overview

Quantity:	200 µg
Target:	CD3E (Muromonab Biosimilar)
Reactivity:	Human
Host:	Rabbit
Antibody Type:	Recombinant Antibody
Clonality:	Chimeric
Conjugate:	This CD3E (Muromonab Biosimilar) antibody is un-conjugated
Application:	Flow Cytometry (FACS)

#### Product Details

Immunogen:	Human peripheral E+ cells.
Clone:	OKT-3
Isotype:	IgG kappa
Characteristics:	Original Species of Ab: Mouse Original Format of Ab: IgG2a
Purification:	Purified antibody.

#### Target Details

Target:	CD3E (Muromonab Biosimilar)
Background:	CD3e, T-cell surface glycoprotein CD3 epsilon chain, T-cell surface antigen T3/Leu-4 epsilon

## Target Details

chain, CD3e, OKT3

UniProt: [P07766](#)

## Application Details

Application Notes: Optimal working dilution should be determined by the investigator.

Comment: This chimeric rabbit antibody was made using the variable domain sequences of the original Mouse IgG2a format, for improved compatibility with existing reagents, assays and techniques.

Restrictions: For Research Use only

## Handling

Buffer: PBS with 0.02 % Proclin 300.

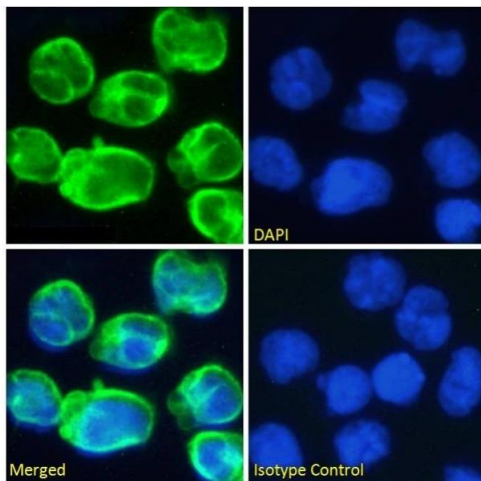
Preservative: ProClin

Precaution of Use: This product contains ProClin: a POISONOUS AND HAZARDOUS SUBSTANCE which should be handled by trained staff only.

Storage: 4 °C,-20 °C

Storage Comment: Store at 4°C for up to 3 months. For longer storage, aliquot and store at -20°C.

## Images



### Immunofluorescence

**Image 1.** Immunofluorescence staining of fixed Molt4 cells with anti-CD3 epsilon antibody OKT-3. Immunofluorescence analysis of paraformaldehyde fixed Molt4 cells on Shi-fix™ coverslips, permeabilized with 0.15 % Triton and stained with the chimeric rabbit IgG version of OKT-3 (ABIN7072204) at 10 µg/mL for 1h followed by Alexa Fluor®488 secondary antibody (1 µg/mL), showing membrane staining. The nuclear stain is DAPI (blue). Panels show from left-right, top-bottom ABIN7072204, DAPI, merged channels and an isotype control. The isotype control was stained with an anti-Fluorescein antibody followed by Alexa Fluor®488 secondary antibody.