



[Go to Product page](#)

Datasheet for ABIN7072205

Recombinant anti-D-Dimer antibody

1 Image

Overview

Quantity:	200 µg
Target:	D-Dimer
Reactivity:	Human
Host:	Rabbit
Antibody Type:	Recombinant Antibody
Clonality:	Chimeric
Conjugate:	This D-Dimer antibody is un-conjugated
Application:	ELISA, Lateral Flow (LF), Agglutination (AGG), Latex Agglutination (LA)

Product Details

Immunogen:	Human cross-linked D-Dimer.
Clone:	3B6
Isotype:	IgG kappa
Characteristics:	Original Species of Ab: Mouse Original Format of Ab: IgG3
Purification:	Purified antibody.

Target Details

Target:	D-Dimer
Abstract:	D-Dimer Products

Target Details

Background: XDP, Fragment D-dimer, Fibrin degradation fragment, Fibrin degradation product

UniProt: [P02671](#)

Application Details

Application Notes: Optimal working dilution should be determined by the investigator.

Comment: This chimeric rabbit antibody was made using the variable domain sequences of the original murine IgG3 format, for improved compatibility with existing reagents, assays and techniques.

Restrictions: For Research Use only

Handling

Buffer: PBS with 0.02 % Proclin 300.

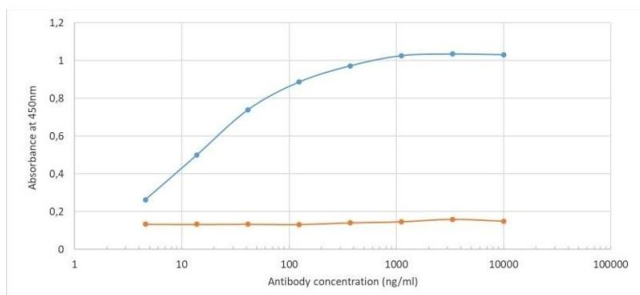
Preservative: ProClin

Precaution of Use: This product contains ProClin: a POISONOUS AND HAZARDOUS SUBSTANCE which should be handled by trained staff only.

Storage: 4 °C, -20 °C

Storage Comment: Store at 4°C for up to 3 months. For longer storage, aliquot and store at -20°C.

Images



ELISA

Image 1. Binding curve of anti-D-Dimer antibody 3B6 (ABIN7072205) to D-dimer protein. ELISA plate coated with D-dimer protein (Bio-Rad 4440-0256) at a concentration of 5 µg/mL. A 3-fold serial dilution from 10,000 ng/mL was performed using ABIN7072205 (blue curve). For detection, a 1:4000 dilution of HRP-labelled anti-rabbit IgG antibody was used. Rabbit anti-Fluorescein [4-4-20 (enhanced)] antibody (ABIN5668035) was used as a control (orange curve).