

Datasheet for ABIN7072214

Recombinant anti-CD2 antibody



[Go to Product page](#)

2 Images

Overview

Quantity:	200 µg
Target:	CD2
Reactivity:	Human
Host:	Rabbit
Antibody Type:	Recombinant Antibody
Clonality:	Chimeric
Conjugate:	This CD2 antibody is un-conjugated
Application:	Flow Cytometry (FACS), Depletion (Dep)

Product Details

Purpose:	Anti-CD2 [YTH 655], Rabbit IgG, kappa
Immunogen:	This antibody was raised against CD2 expressing cells.
Clone:	YTH 655
Isotype:	IgG kappa
Specificity:	This antibody specifically recognizes human CD2, a cell adhesion molecule found on the surface of T cells and natural killer (NK) cells.
Characteristics:	Original Species of Ab: Rat Original Format of Ab: IgG2b
Purification:	Protein A affinity purified

Target Details

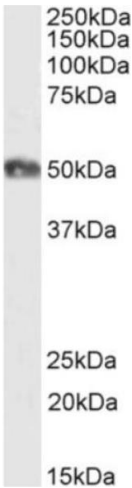
Target:	CD2
Alternative Name:	CD2 (CD2 Products)
Background:	LFA-2, T-cell surface antigen CD2, Erythrocyte receptor, LFA-3 receptor, Rosette receptor, T-cell surface antigen T11/Leu-5
UniProt:	P06729

Application Details

Application Notes:	Optimal working dilution should be determined by the investigator.
Comment:	This chimeric rabbit antibody was made using the variable domain sequences of the original Rat IgG2b format, for improved compatibility with existing reagents, assays and techniques.
Restrictions:	For Research Use only

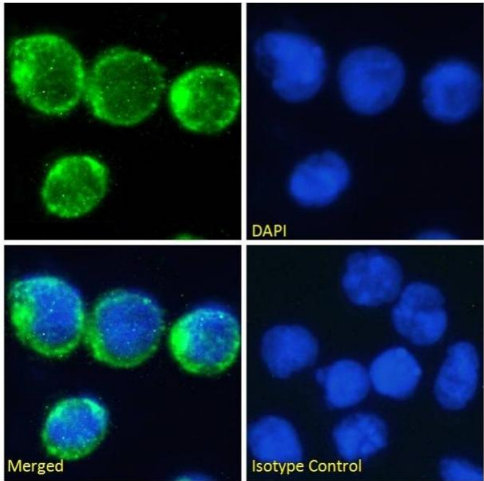
Handling

Concentration:	1 mg/mL
Buffer:	PBS with 0.02 % Proclin 300.
Preservative:	ProClin
Precaution of Use:	This product contains ProClin: a POISONOUS AND HAZARDOUS SUBSTANCE which should be handled by trained staff only.
Storage:	4 °C, -20 °C
Storage Comment:	Store at 4°C for up to 3 months. For longer storage, aliquot and store at -20°C.



Western Blotting

Image 1. Western Blot using anti-CD2 antibody YTH 655 Human tonsil lysate samples (35 µg protein in RIPA buffer) were resolved on a 10 % SDS PAGE gel and blots probed with the chimeric rabbit version of YTH 655 (ABIN7072214) at 1 µg/mL before detection using an anti-rabbit secondary antibody. A primary incubation of 1h was used and protein was detected by chemiluminescence. The expected running size for unmodified CD2 is 39.5 kDa, but this protein is glycosylated at several residues. ABIN7072214 successfully detected CD2 in human tonsil lysate.



Immunofluorescence

Image 2. Immunofluorescence staining of fixed Molt4 cells with anti-CD2 antibody YTH 655. Immunofluorescence analysis of paraformaldehyde fixed Molt4 cells on Shi-fix™ coverslips, permeabilized with 0.15 % Triton and stained with the chimeric rabbit IgG version of YTH 655 (ABIN7072214) at 10 µg/mL for 1h followed by Alexa Fluor®488 secondary antibody (1 µg/mL), showing membrane, and some cytoplasmic staining. The nuclear stain is DAPI (blue). Panels show from left-right, top-bottom ABIN7072214, DAPI, merged channels and an isotype control. The isotype control was stained with an anti-Fluorescein antibody followed by Alexa Fluor®488 secondary antibody.